



# International Erosion Control Association

*Serving Erosion Control Professionals in Arizona, California, Nevada, and Hawaii*

## IN THIS ISSUE

President's Message 1

Truckee & Tahoe  
Restoration  
Projects Tour  
Recap 2-5

Meet Your  
Newest Board  
Member 5

Regional News 6-10

Products & Services 8-10

Professional  
Listings 11-12

## PRESIDENT'S MESSAGE

Dear Western Chapter Members,

We have made it to the wet season, and erosion and sediment control are once again at the forefront as professionals respond to fire-burned areas and other areas where flooding, and erosion and sediment are a concern. Remember that our Chapter website has available contact information for various experienced professionals, products, and resources. These resources can be found at [Western Chapter Products & Services Directory](#)

### Bot-Driven Emails

Communicating with our membership is important to the Western Chapter's Board of Directors. Our contact and Board position is posted on the Chapter's website for easy access to the membership. Unfortunately, many scams have used internet bots to gather this information and then use it to email our membership with emails that appear to be coming specifically from the Directors. For example, many members receive an email from me asking for anything from gift cards to a moment of their time. The email even says that it is coming from "Melanie Sotelo" or another Director, yet when you select my name, it shows some off-the-wall Gmail address, which is the only way to verify the emails are not coming from myself or other Directors. Many of our members have requested that these scam emails cease, but because our accounts were not hacked, we are unable to control the messages. To combat this problem, some of the Board Members have removed their emails from the Chapter website, though our phone numbers remain posted. We are hoping this helps to alleviate the issue.

### Changes in Directors of the Board

Director, Kim Aldrich has elected to step down from the Board, and we want to say a resounding "thank you" to Kim for all the time, effort, and support she has given to the Chapter in helping. She will be missed. Additionally, the Board is honored to welcome our newest Director, John Oldenburger III. John is a Water Resource Engineer working with Core & Main Geosynthetics and brings to the Board extensive erosion and geosynthetics experience. Please join me in welcoming John to the Board.

### Board at Work

Your Western Chapter Board has been busy working up potential future educational opportunities for our members. Look for a future virtual session on the California 2022 Construction General Permit, another northern California-based in-person Master Class in Erosion and Sediment Control, as well as other ideas still being developed. If you have a recommendation for an educational session, please share it with the Board to see how it may be developed for the membership. All ideas are welcome.

Wishing you and your family a wonderful holiday season.

Sincerely,  
Melanie Sotelo – President



**Melanie Sotelo MSE,  
CPESC, CPSWQ  
WCIECA President  
[msotelo@cascinc.com](mailto:msotelo@cascinc.com)  
CASC Engineering &  
Consulting**

## **TRUCKEE & TAHOE RESTORATION PROJECTS TOUR RECAP – KIM ALDRICH**

The Western Chapter was proud to offer two days of touring the restoration successes of the Martis Valley in Truckee, and Upper Truckee River Marsh in South Lake Tahoe projects with 27 attendees on August 4<sup>th</sup> and 5<sup>th</sup> 2022. Both days were filled with the amazing beauty the area has to offer, and a rare opportunity to tour several projects that are bringing back natural environments and cultural resources. The group heard from project proponents who presented first-hand knowledge of the challenges and successes of the restorations.

### **Day 1: Martis Valley**



Attendees enjoyed traveling the valley in the comfort of a large coach bus. First stop was the Martis Valley project which was located approximately three miles east of Truckee. Brian Hastings of Balance Hydraulics, James Mizoguchi of Triangle Properties (a division of Teichert), Kym Kelley of Kelley Erosion Control, and Julie Etra of Western Botanical Services shared first-hand experiences with the development and execution of the multiphase project. The project focused on restoring 70 acres of meadow and restoration of five reaches (about 2 miles) along Martis Creek, as well as the restoration of three small sites on tributaries to Martis Creek. The 2 miles of streams were repaired by reconnecting broken channels which slows run-off and prevents erosion, making the water cleaner and keeping the meadow wetter. A functioning wet meadow buffers the effects of drought, helps prevent fast-traveling wildfires, and abates downstream flooding. Western Botanical Services developed the revegetation specifications for restoring native plant like lupine and rush back into the meadow which helps prevent invasive species from taking over. Restoring wet meadow also revives wildlife habitats allowing birds to nest, bugs to support the food chain, fish, and frogs to thrive, and wildlife to return. Significant public benefits for the future will also include access to the Martis Valley Trail which was still under construction at the time of the tour. This trail will link the town of Truckee, Kings Beach, and Tahoe City with the Northstar Village.

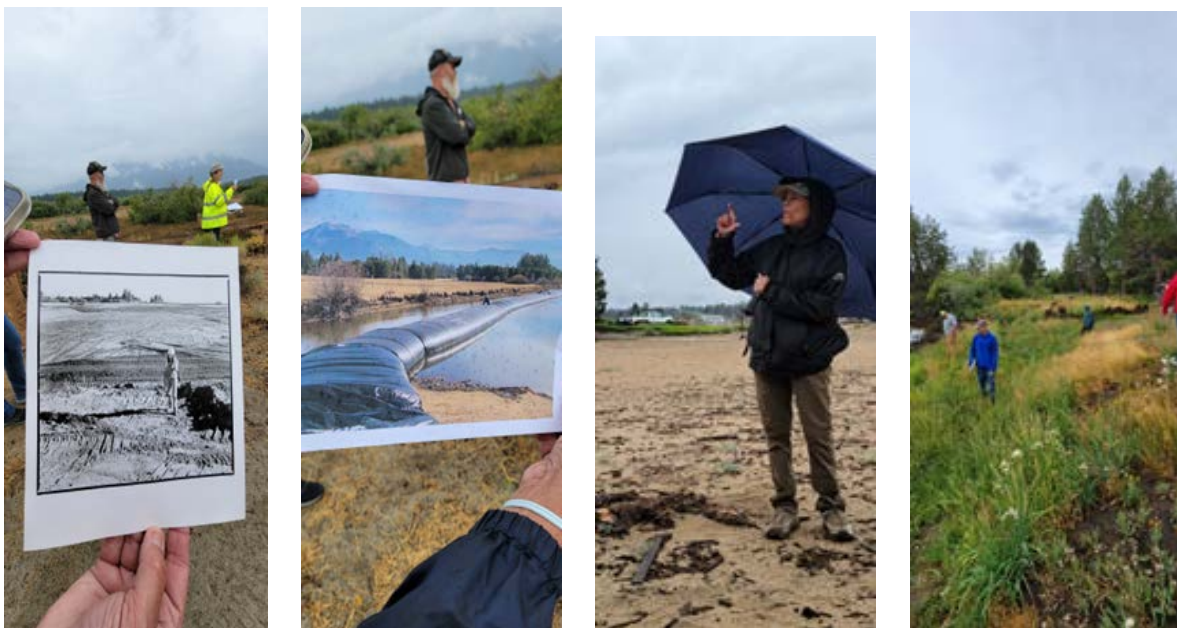




## TRUCKEE & TAHOE RESTORATION PROJECTS TOUR RECAP

### Day 2: Upper Truckee River Marsh in South Lake Tahoe and Lower West Side Wetland Restoration Project.

Day 2 started with a bit of rain and few mosquitos buzzing around, but it didn't keep us from enjoying the incredible talks given by Carol Beahan of Wildscape Engineering, Scott Carroll of the California Tahoe Conservancy, Brent Wolfe of Northwest Hydraulics, and WCIECA board member, Julie Etra. There's no doubt Lake Tahoe is gorgeous to look at, but there's more to this amazing place than meets the eye. The California Tahoe Conservancy manages 4,700 properties as part of its mission to lead California's efforts to restore and enhance the extraordinary natural and recreational resources of the Lake Tahoe Basin. The lower west side in South Lake Tahoe (where one of the projects we toured is located) is a small portion of the Conservancies' management. The goal of the Lower West Side project was to re-establish a meadow environment that would remove sediment and nutrients that affect lake clarity. The project objectives were to achieve the settling of sediments, physical filtering by wetland plants, and biological uptake by plants and soil bacteria during flood events and/or during high lake levels. The restoration of approximately 23 acres of what was a largely unvegetated area re-created natural upland and wetland plant communities on the site and significantly increased the abundance and diversity of vegetation. Some of the wetland restoration was not yet completed, so we were able to walk through the work in progress and discuss the successes and challenges of the project with the project managers.



It was very interesting to observe a “live” project at the Upper Truckee Marsh in South Lake Tahoe. Three primary components of the project are 12 acres of wetland creation by relocating fill placed in historic marshland into a portion of the Tahoe Keys Marina, channel construction to redirect river flows into historic channels, and construction of an ADA-accessible pedestrian trail.

A few construction highlights:

- Almost all materials were generated on-site and utilized in both components of the project. Trees harvested in the wetland creation area were used in the construction of stream channels, fill dredged to create the marina was placed back into a former marina lagoon, trees were chipped to mulch revegetation areas, and fill generated from channel construction was used to fill the former marina lagoon.

*Continued Page 5*



## RESTORATION PROJECTS TOUR COLLAGE



## THANK YOU TO OUR...

**Speakers** - Brian Hastings, James Mizoguchi, Kym Kelley, Julie Etra Carol Beahan, Scott Carroll, and Brent Wolfe.

**Education Committee & Planning Team** - Julie Etra Chair, Claudia Chambers, Kym Kelley, Melanie Sotelo, Kim Aldrich, Jeanne Duarte, Stephen Knutson, Darcy Biddle, and Cyndi Brinkhurst.

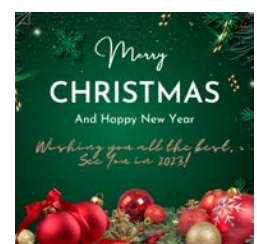
### Sponsors

The bus was the biggest expense item in the budget, and it offered us a safe mode of transportation with air-conditioned comfort, storage for snacks/water, and a handy restroom facility.



Our deepest gratitude to...

[Western Botanical Services](#)  
[Kelley Erosion Control](#)  
[Earthsavers Erosion Control](#)  
[BT Consulting](#)  
[Erosion Control Products Corp.](#)  
[Stover Seed](#)  
[JRD Imaging](#)  
[Storm Water Resources](#)  
[Grassroots Environmental](#)  
[Oakridge Landscape](#)  
[Stormwater Specialists](#)  
[Sustane](#)  
[The Land Stewards](#)



## TRUCKEE & TAHOE RESTORATION PROJECTS TOUR RECAP CONTINUED

A few construction highlights (continued from Page 3):

- Many external hurdles were overcome, including Covid, smoke impacts from wildfires, and wildfire evacuation.
- Public access was maintained through almost all of the construction.
- Special specifications on the placement of fill in the marina to ensure aquatic invasive species are completely buried under at least 2 feet of material.
- Retention of an earthen berm to prevent river flows from entering the new wetland until year 3.

To summarize the Tahoe and Truckee restoration tour: when we disembarked the tour bus, the common comment from participants was gratitude for such an interesting and engaging event. Not only did we share in the learning experiences of the teams that developed and executed these important projects for the future of Lake Tahoe, but we also gained new friendships and connections. The Western Chapter would like to recognize Kelley Erosion Control from Reno, Nevada who contributed to the success of the projects and volunteered their time and creativity to ensure everyone was safe and comfortable during the tours including providing handouts, snacks, lunches, and refreshments.

## MEET YOUR NEWEST BOARD MEMBER



**John Oldenburger III, MSCE, P.E.**

**Market Development Manager**

**Core & Main**

Cell: 916-250-7816

Office: 530-662-7700

[john.oldenburgeriii@coreandmain.com](mailto:john.oldenburgeriii@coreandmain.com)

John Oldenburger III, P.E. received his B.S. in Civil Engineering and M.S. degree in Civil Engineering (emphasis on Water Resources) from California State University, Sacramento. John worked as a hydraulic engineer for the US Army Corps of Engineers for seven years, serving in both the Sacramento and Los Angeles Districts. Following his experience at the Corps of Engineers, John diversified his engineering and business skills as a water resources consultant, engineering project manager for a homebuilder, and purchasing and contracts manager for a construction company.

In 2008, John joined Propex (now Solmax) as a market development manager responsible for providing engineering, technical, and installation support for erosion control, slope stability, and geosynthetic applications throughout the West. In 2017, John joined Earthsavers Erosion Control where he has contributed towards different operations, sales, and leadership roles. Earthsavers was acquired by Core & Main in June 2022. John currently serves as Market Development Manager for Core & Main Geosynthetics.

John is married with four children. John enjoys playing basketball and spending time with his family. For the past 15 years, John has served as a board member for the Raise Your Hand Foundation, a non-profit organization providing scholarships and medical resources to Liberians in West Africa.



## REGIONAL NEWS FROM IECA

### TOP NEWS

#### [Study: Coordination key to address rising seas in CA](#)

Key infrastructure that supports most of California's airports and coastal population faces increasing risk of flooding, as sea levels are predicted to rise 8 inches over the next 30 years and coastal erosion continues, according to a study from the University of California at Berkeley. The study calls for adaptation plans and policies that cross jurisdictional boundaries and consider infrastructure interconnections. **Full Story:** [ScienceDaily](#) (12/5)

#### [Clean Water Act compliance surges under 47-state pact](#)

A compliance agreement among 47 states and the Environmental Protection Agency has reached its goal early for cutting noncompliance with the Clean Water Act by half over five years, the agency announced. The 2018 pact has cut major noncompliance from 20.3% to 9%, the EPA said. **Full Story:** [The Hill](#) (11/22)

#### [Study: 10 inches of sea rise unavoidable; more is likely](#)

A 10-inch rise in sea levels is now ensured for the planet, according to a study published in Nature Climate Change. The study draws on satellite data from the past 20 years and also concludes that more than 3 feet of sea level rise can be expected if greenhouse gas emissions are not reduced. **Full Story:** [Radio New Zealand](#) (8/30)

#### [Massive drought-resilience package moving through House](#)

The 48-bill Wildfire Response and Drought Resiliency Act package being considered by the House of Representatives aims to strengthen water reliability and alleviate current and future drought conditions. The package includes provisions to bolster water-tracking efforts involving multiple agencies, improve water security and provide funding for water recycling projects. **Full Story:** [E&E News](#) (7/21)

#### [Biden restores US species protections](#)

A federal rule under the Trump administration to rein in the definition of habitat protecting endangered species has been canceled by the Biden administration. The rule was confusing and inconsistent with the relevant law's conservation purposes, said the US Fish and Wildlife Service and National Marine Fisheries Service. **Full Story:** [The Associated Press](#) (6/23)

#### [Hawaii to explore more heat-resistant coral reefs](#)

The Defense Advanced Research Projects Agency has committed as much as \$25 million to a project by the University of Hawaii at Manoa to create a coral reef ecosystem. The project will place larvae from heat-resilient coral species in reef-like structures in a bid to generate coast-protecting reefs that can remain resilient against rising sea temperatures. **Full Story:** [Hawaii Public Radio](#) (6/20)

#### [EPA seeks to restore Section 401 authority under CWA](#)

The Environmental Protection Agency on Thursday released a proposed rule that empowers states and tribes to use Section 401 authority under the Clean Water Act to block natural gas pipelines and other energy projects over water pollution concerns, undoing a Trump-era rule that reined in local officials' ability to oppose such projects. "EPA's proposed rule builds on this foundation by empowering states, territories, and Tribes to use Congressionally granted authority to protect precious water resources while supporting much-needed infrastructure projects that create jobs and bolster our economy," Administrator Michael Regan said. **Full Story:** [Reuters](#) (6/2), [The New York Times](#) (6/2), [The Associated Press](#) (6/2)

### MS4 MANAGEMENT

#### [Marines' Hawaii base to address stormwater violations](#)

The Marine Corps has agreed to address stormwater deficiencies at its base in Kaneohe, Hawaii. The US Environmental Protection Agency found in 2020 that the base "exceeded discharge limits and failed to submit all discharge monitoring data" required under a national permit. **Full Story:** [KHNL-TV/KGMB-TV \(Honolulu\)](#) (8/11)

## REGIONAL NEWS FROM IECA

### POLICY AND REGULATION

#### [Repair package agreed for Pajaro Valley levees](#)

Federal and state officials have agreed on a \$400 million funding package for renovations to the dilapidated Pajaro River levee system protecting Watsonville and Pajaro Valley in California. Flood waters have breached the 70-year-old levee system on several occasions, most notably in 1995. **Full Story:** [Santa Cruz Sentinel \(CA\)](#) (10/20)

#### [EPA urged to expand drinking water substance monitoring](#)

The Environmental Protection Agency's 2021 draft list for substances to potentially regulate under the Safe Drinking Water Act includes PFAS, but it should be expanded to feature more bisphenols and other chemicals, the EPA's Science Advisory Board says. The SAB would also like to see microplastics, nanoparticles and antimicrobial-resistance genes on the list eventually. **Full Story:** [Chemical & Engineering News \(tiered subscription model\)](#) (8/25)

#### [CA debuts new strategy for looming water shortage](#)

California Gov. Gavin Newsom on Thursday outlined a plan leveraging water recycling and reuse, desalination and other technologies to help the state shore up its water supplies, which could decline 10% by 2040. "We will be working hand in hand with the governor's office and water agencies across the state, the Southwest and Metropolitan's service area to develop new supplies and infrastructure that will provide resilience to protect our health, economy and environment with no one left behind," said Adel Hagekhalil of the Metropolitan Water District. **Full Story:** [The Hill](#) (8/11), [Reuters](#) (8/12), [E&E News](#) (8/11)

#### [Hawaii fund would facilitate retreat from rising seas](#)

Legislation being considered in Maui County, Hawaii, would establish a revolving fund that would help reduce the negative effects of shoreline erosion and sea-level rise in West Maui, where a road and utility lanes are nearly under water and nine condominium complexes may fall into the ocean. The bill would add a chapter into county code that would help residents who must abandon property that ends up underwater as well as offer aid when public infrastructure is endangered by rising seas. **Full Story:** [Maui Now \(Hawaii\)](#) (8/5)

#### [House bill would fund US estuary program](#)

Rep. Mike Levin, D-CA, is joined by fellow lawmakers from California, Florida and Oregon in backing a House bill to reauthorize \$60 million in annual funding for the Coastal and Estuarine Land Conservation Program. The funds would serve to protect estuary habitats, including efforts to restore ecological function, preserve migration patterns and protect coastal communities. **Full Story:** [San Clemente Times \(Capistrano Beach, CA\)](#) (6/21)

### EROSION/SEDIMENT CONTROL

#### [US to help restore CA's Salton Sea](#)

California's shrinking Salton Sea will benefit from \$250 million in federal spending over four years for cleanup and restoration. The lake has long depended on agricultural runoff but has been losing water in recent dry years, leaving behind toxic dust. **Full Story:** [The Associated Press](#) (11/28)

#### [Hawaii group seeks ways to adjust to rapid erosion](#)

Hawaii's North Shore Coastal Resilience Working Group makes six recommendations to better manage the desperate situation of homeowners facing accelerating beach erosion. Members cite a currently chaotic situation as they call for clearer guidelines on what owners may and may not do to protect their properties. **Full Story:** [Honolulu Civil Beat](#) (10/31)

#### [CA winemaker protests order to replant burned trees](#)

A winemaker in California's Napa County is planting an experimental low-disturbance vineyard in the place of trees burned in the 2020 Glass Fire. However, Jayson Woodbridge says county officials have ordered him to stop and instead replace the trees, which he says are a fire hazard. **Full Story:** [The Missoula Current \(Mont.\)/Courthouse News](#) (10/12)

## REGIONAL NEWS FROM IECA

### EROSION/SEDIMENT CONTROL CONTINUED

#### Work begins to stabilize CA coastal railroad tracks

Emergency work is underway to address slippage observed in about 700 feet of coastal railroad tracks north of Camp Pendleton in California. The \$6 million construction project is expected to take 30 to 45 days to restore the only rail line linking San Diego to the rest of the country. **Full Story:** [Los Angeles Times \(tiered subscription model\)](#) (10/5)

#### Homeowners' makeshift sea walls seen as danger in Hawaii

Sand tubes and black fabric have been applied haphazardly by coastal homeowners along Oahu's North Shore in Hawaii as they resort to any means to keep their properties from being washed into the sea, but officials say such measures imperil public beaches. "Allowing these structures to remain endangers the public beach, limits access to them for much of the year, and is littering the near-shore marine and shoreline environment with debris," says Michael Cain, administrator of the Department of Land and Natural Resources' Office of Conservation and Coastal Lands. **Full Story:** [SFGate \(San Francisco\)](#) (9/25)

#### Studies: Pollutants soar in waterways after wildfires

Waters in areas struck by wildfires suffer significant pollution that can linger, according to a recent report published in the American Geophysical Union's Water Resources Research journal. The report pulls together studies from 184 scientific papers since 1980, noting a post-fire increase in streamflows and sediments that include toxic and organic metals and nutrients in concentrations up to 100 times those preceding the fires. **Full Story:** [ScienceDaily](#) (9/15)

#### Sediment removal to begin at L.A. County reservoir

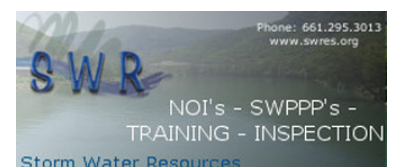
The Los Angeles County, CA, Public Works Department on Thursday will start annual maintenance, including sediment removal, at the Devil's Gate Reservoir behind the dam of the same name. The work is expected to last three months and will remove 45,000 cubic yards of sediment to help ease flooding along the Arroyo Seco. **Full Story:** [Pasadena Now \(CA\)](#) (8/30)

#### CA project to keep road sediment from reaching creek

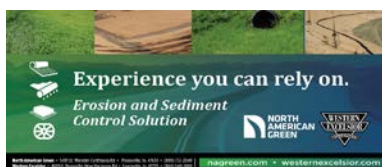
A project to prevent road and trail sediment from entering Big Chico Creek in Bidwell Park in Chico, CA, will begin Monday. The Upper Park Road Sediment Reduction Project will use new culverts and rolling dips to better channel stormwater. **Full Story:** [Chico Enterprise-Record \(CA\)](#) (8/2)

#### Satellite images to help study CA coastline erosion

Satellite imagery funded by NASA will give planners and environmental engineers a clearer picture of severe coastline erosion in Southern California's Orange County. Engineering researchers at the University of California at Irvine and University of Houston are teaming up to better gauge flood risk and understand where sand is disappearing and accumulating at dunes and beaches. **Full Story:** [The Orange County Register \(Anaheim, CA\) \(tiered subscription model\)](#) (7/15)







## REGIONAL NEWS FROM IECA

### EROSION/SEDIMENT CONTROL

#### [Las Vegas being protected from post-wildfire flooding](#)

The effects of the Calf Canyon/Hermits Peak Fire in New Mexico on water supplies and land may be felt for decades to come, but efforts are underway to minimize the damage. The US Forest Service is warning of an extreme flood risk near Las Vegas posed by almost 30,000 burned acres in the Gallinas and Tecolote Creek watersheds, and flood barriers for the city are now being installed. **Full Story:** [Albuquerque Journal \(N.M.\) \(tiered subscription model\)](#) (7/8)

#### [Erosion threatens road in AZ city](#)

Hohokam Drive in Nogales, AZ, is increasingly threatened by spreading erosion at Nogales Wash, but City Engineer Juan Guerra says no action can be taken until the Arizona Department of Environmental Quality and the US Army Corps of Engineers grant their approvals. Minus those clearances, the only way the city would act would be in the event of an extreme weather event posing an immediate danger to the road, Guerra says. **Full Story:** [Nogales International \(AZ\)](#) (6/23)

#### [Waikiki coast presents difficulties for mitigating erosion](#)

Several small beaches make up the coastline of Waikiki, Hawaii, which creates a complex situation for addressing sand erosion, according to Dolan Eversole of the University of Hawaii Sea Grant Program. "Each beach is a little different because of all the structures that are built that go out into the water," Eversole says. **Full Story:** [Hawaii Public Radio](#) (6/2)

### STORMWATER MANAGEMENT

#### [Flood barrier completed in Yuba County, CA](#)

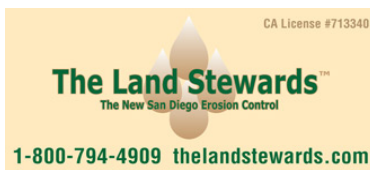
After 10 years of work that began with planning, the Bear River Setback Levee has reached completion in Yuba County, CA. The barrier is a key part of 100-year flood protection for Wheatland. **Full Story:** [KCRA-TV \(Sacramento, CA\)](#) (11/16)

#### [Report: Stronger floods will cost Western US billions](#)

Climate change is making atmospheric river flooding more intense, and such events will likely cost the Western US up to \$3.2 billion in damage per year by 2100, according to researchers at the University of California San Diego. "As atmospheric rivers become more intense, flood damages are on track to triple by the end of the century, but it's not too late to limit the risk," UC San Diego climate economist Tom Corringham says. **Full Story:** [The San Diego Union-Tribune \(tiered subscription model\)](#) (8/23)

#### [CA funding clears way for flood prevention project](#)

California's \$400 million Pajaro River Flood Risk Management Project is ready to begin construction with the governor's signature on a bill to provide state funds for 35% of the cost. The long-sought project is designed to prevent periodic flooding in the area of Pajaro and Watsonville, where existing levees have proved inadequate. **Full Story:** [KSBW-TV \(Salinas, CA\)](#) (9/29)



## REGIONAL NEWS FROM IECA

### WETLANDS & COASTAL RESTORATION

#### [CA living shoreline project advances](#)

The California Coastal Commission has cleared a pilot plan to create a "living shoreline" extending from Capistrano Beach to Dana Point's southern Doheny State Beach. Cobblestone would be spread along the shore to be topped by sand and then vegetation in a bid to prevent destructive erosion, but funding must be raised to cover the cost, which could be as high as \$14 million. **Full Story:** [The Orange County Register \(Anaheim, CA\) \(tiered subscription model\)](#) (11/17)

#### [National Park Service restoring CA's Marin Headlands](#)

Runoff from abandoned Army infrastructure is eroding parts of California's Marin Headlands and the National Park Service is working to address the problem with a one-acre wetland restoration project. NPS is directing \$50,000 toward the \$75,000 project and the remaining funds will come from the National Park Foundation. **Full Story:** [Marin Independent Journal \(San Rafael, CA\)](#) (11/5)

#### [CA advances repair of failed slope in La Jolla](#)

The California Coastal Commission voted last week to repair and return vegetation to a slope in La Jolla that failed due to a water line break four years ago. Work is expected to begin early next year and take about six months over an area of about 100 feet long by 75 feet wide. **Full Story:** [La Jolla Light \(CA\)](#) (9/12)

#### [San Diego climate plan includes 700 acres of marshland](#)

San Diego's new climate action plan calls for 700 new acres of marshland. The marshes will serve as a carbon sink and a means to absorb water from rising sea levels. **Full Story:** [The San Diego Union-Tribune \(tiered subscription model\)](#) (8/23)

#### [CA wetlands restoration to begin late](#)

A new report claims Poseidon Resources, the builder and operator of a seawater desalination plant in Carlsbad, CA, has failed to begin construction in a timely manner on a wetlands habitat restoration at the San Diego National Wildlife Refuge. The California Coastal Commission granted Poseidon a permit that entailed beginning the restoration last October, but the company contends there are conflicting provisions in the permit that effectively limited what it could do. **Full Story:** [The San Diego Union-Tribune \(tiered subscription model\)](#) (8/8)

#### [\\$29M in new funding to protect CA wetlands](#)

The San Francisco Bay Water Quality Improvement Fund is offering about \$29 million in its largest single allocation of grants ever to protect watersheds and wetlands in San Mateo County. The funding boost comes with help from the US Environmental Protection Agency, with each project to receive \$1 million to \$3 million. **Full Story:** [San Mateo Daily Journal \(CA\) \(tiered subscription model\)](#) (8/4)

#### [Hawaii beach restoration project earns honor](#)

The American Shore and Beach Preservation Association has recognized Hawaii's Waikiki Beach Restoration Project as the best in the nation. The project roughly doubled the width of Royal Hawaiian Beach when completed last year with the placement of 21,700 cubic yards of sand. **Full Story:** [Big Island Now \(Hawaii\)](#) (6/23)





## PROFESSIONAL LISTINGS

**Dirttime.tv** is an affiliated brand of [Salix Applied Earthcare LLC](#), formed in 1996 by John McCullah. John has been involved in Watershed Management for 30 years, becoming a certified erosion specialist in 1986. The firm's work involves consulting, training, design/build of stream restoration, bioengineering, education, and awareness. Salix has published design guidance manuals, books, popular and technical articles, and informative case studies. Dirttime.tv has produced over 40 Dirt Time videos. Selecting and watching the clips of your choice then taking tests online is a popular way to earn CEUs. Visit [www.dirttime.tv](http://www.dirttime.tv) regularly for 'how to' info, tips, and blogs.

**Earthsavers Erosion Control Products** is the home of the "Original Rice Straw Wattle." Our certified weed-free wattles have been tested for sediment retention at San Diego State University and proven in field studies by Caltrans and numerous other agencies. Earthsavers wattles are available in 3 diameters, photodegradable netting, or 100% biodegradable burlap. Additionally, [Earthsavers](#) is a master distributor for a full line of erosion & sediment control products, geosynthetics and more. Our network of distributors provides local access to premium BMPs and Earthsaver's experienced staff can provide superior technical support to our distributors and their customers and specifiers.

**Kelley Erosion Control, Inc.** was established in 1983 is recognized throughout Nevada and California as a leader in the industry. The company has an excellent reputation known for quality, competency, solutions, innovative ideas, cutting edge technology, excellence, and client satisfaction. Services include: hydroseeding, site preparation, dust control applications, BMP's, revegetation and project maintenance, site winterization, wetland mitigation, stream channel stabilization, planting and irrigation, mining reclamation, soil stabilizer applications, biotechnical applications, and fire restoration/rehabilitation. Phone (775) 322-7755; Fax (775) 322-6606. Contact – Claudia Chambers CPESC, CISEC, QSP [Claudia@kelleyerosioncontrol.com](mailto:Claudia@kelleyerosioncontrol.com). Visit us at [www.kelleyerosioncontrol.com](http://www.kelleyerosioncontrol.com).

**LSC Environmental Products** exists to solve some of the industry's most persistent environmental challenges, such as erosion, revegetation, odor, dust, and waste cover, through the application of our spray-applied coatings. You probably know LSC as the "ADC guys," but we are more than that with the acquisition of Terra Novo, Inc., (best known for their EarthGuard® products); and have served the erosion and sediment control industry for almost 20 years. We are excited to offer new solutions, including soil amendment, site winterization, intermediate cover, and special waste that we believe can benefit virtually any site.

**Nedia Enterprises** manufactures a complete line of erosion control, sediment control, and bioengineering products that are made primarily from natural fibers. Committed to the conservation of the environment, we are constantly striving to develop products that contribute to its enhancement and protection. Our products are subject to stringent quality control measures that meet, or exceed, industry standards. [Nedia](#) offers sound technical advice on product selection and installation, with a thorough understanding of the benefits and limitations of the products. A large inventory of products in several distribution centers across the country facilitates cost-effective and timely delivery of our products. Contact 888-725-6999 or email [info@nedia.com](mailto:info@nedia.com).

**Rocky Mountain Bio Products** supplies organic bio-fertilizers, natural soil conditioners, and soil amendments. Biosol Forte is an organic fungal and bacterial biomass from penicillin production, with unique, stable, and long-lasting nutrients for rebuilding all types of soil for revegetation. Menefee Humate is a natural soil conditioner for plant cell and root development. MycoApply mycorrhizae fungus is the amendment that aids in expanding the plant's root mass 100 to 1000 times larger, which helps plants be healthier and handle environmental stress. Our PermaMatrix is a Biotic Soil Amendment, is a topsoil replacement/alternative. Visit: [www.WEFIXDIRT.com](http://www.WEFIXDIRT.com) for product and distributor information.

**NV5** is a multi-disciplinary engineering company that is a one stop for most of your development and engineering needs. Engineering and Professional Services include (but not limited to): Civil, Environmental, Construction, Mechanical, Survey, Building Inspection, Geophysical, and Geospatial Surveys. With offices in Arizona, Nevada, California, and throughout the country, we are here to serve all your environmental and engineering needs. In the Erosion and Sediment Control Industry we focus on SWPPP compliance services (CA QSDs and QSPs, owner representation, inspection services, LID/WQMP engineering designs, etc.). Contact the Long Beach, California office for more specific details. (562) 495-5777 [Matthew.Renaud@nv5.com](mailto:Matthew.Renaud@nv5.com).

## PROFESSIONAL LISTINGS CONTINUED

**Pacific Coast Seed** is Northern California's premier supplier of grasses and wildflowers native to California, turf grass seed, and other erosion control materials such as fertilizers, mulches, and soil amendments. We provide seed and other materials for diverse applications including restoration, reclamation, revegetation, ornamental landscaping, and erosion control. We offer specialty seed collection from site-specific sources. For more information check out our website [www.pcseed.com](http://www.pcseed.com) or contact us at (925) 373-4417, or [info@pcseed.com](mailto:info@pcseed.com).

**Filtrex** is the leader in sustainable products for erosion & sediment control in industries like commercial construction, homebuilding, post-fire remediation, power & utility, solar, municipalities, DOT, and more. SiltSoxxØ compost filter socks are a high-performance, passive filtration BMP that comply with most state and federal agencies including USEPA, AASHTO, USDA NRCS and US ACE. Also available in two 100% natural, biodegradable mesh materials, eliminating the need for field removal – SiltSoxx NATURAL ORIGINAL and SiltSoxx NATURAL PLUS. Visit <http://www.filtrex.com> for free design & installation specifications, CADs, submittal forms, and webinar training.

**Reno Tahoe Geo Associates, Inc.** – (Formerly Marvin E. Davis & Associates) focuses on the challenging issues of the Tahoe Basin and Northern Nevada/California terrain. Our professionals provide a diverse and solid background in geotechnical engineering, specialized engineering design, erosion control services, construction and forensic inspection services, materials testing, and regulatory/compliance issues to enable project approval. Phone (775) 853-9100 or visit us at <http://www.rtgeo.com/>.

**Sustane Natural Fertilizer** — For over 30 years of continuous operation, [Sustane Natural Fertilizer, Inc.](http://www.sustane.com) has produced the highest quality natural organic fertilizers and soil amendments distributed in the U.S. and exported to 50 countries worldwide. Sustane Natural Fertilizer maintains and operates its U.S.E.P.A. permitted compost site, manufacturing facility, and corporate offices from Cannon Falls, Minnesota. Sustane fertilizers and soil amendments provide readily available, balanced nutrition with beneficial microbiology to provide the basic soil components for exceptional plant establishment and long-term sustainability. Call 800-352-9245 to speak with a Sustane Regional Specialist, or with our International Team Leader.

**Western Green** (and its associated erosion control brands North American Green and Western Excelsior) is the industry leader for manufactured erosion and sediment control products, and holds the industry's most complete product line, ranging from short term ECBs to permanent HPTRM Anchored Systems. Whether your site needs short-term protection or permanent vegetation reinforcement, trust Western Green's quality brand products to handle any erosion issue you may face.

**Linwood Supply, Inc.** distributes the tools you need for erosion control and storm water management including Erosion Control Blankets, TRM and HP-TRM, HydroFiberØ, Coir products, organic fertilizers, native and grass seed; plus, for oil spill remediation - rubberized booms, mats, and filters. Other services include written pesticide recommendations and soil testing. We will always provide you with the level of service and professionalism you deserve. Linwood Supply, Inc. is a certified small business based in California. ***If Your Storm Water is as Clear as MudØ*** – Please call us at (707) 678-5087, or visit us at [www.linwoodsupply.com](http://www.linwoodsupply.com).

**SunWest Golf and Reclamation, Inc.** is an Arizona-based hydroseeding and revegetation services company formed in 1997. The owner, Roby Everhart, has over 35 years' experience throughout the Southwest. SunWest has revegetated thousands of acres and we specialize in hydrostolonizing of golf courses and athletic fields. We have been involved in the grassing of over 300 golf courses in Arizona. SunWest is an owner operated corporation. The owner is involved in all day-to-day operations, to assure positive working results at every project. Roby Everhart and his crew are some of the most experienced people in the industry. His work force has a full understanding of the company's goals and commitments.

**HEADS UP! [2023 IECA Annual Conference and Expo](http://www.ieca.org) February 5-8, Kansas City, MO**  
**Chapter Meeting – Tuesday February 7, 2023, 4-5 PM CT**

**☘ Have yourself the best holiday ever! ☘**