



# International Erosion Control Association

*Serving Erosion Control Professionals in Arizona, California, Nevada, and Hawaii*

## IN THIS ISSUE

President's Message	1
Truckee & Tahoe Restoration Projects Tour	2-3
Stover Seed Turns 100	4
WCIECA Board of Directors Election	4
Regional News	5-8
IECA Resource Library and eHub	5
Upcoming Webinars, Trainings, & Meetings	6
Products & Services	6-8
Send In Your Videos & Pictures	8
Professional Listings	9-10

## PRESIDENT'S MESSAGE

Dear Western Chapter Members,

With the dry conditions continuing in our member states, the significant potential for wildfires persists. We see this in the fact that several fires are currently active throughout our coverage area. One of many post-fire concerns is erosion. Post-fire erosion is impacted by precipitation, slopes, soil types, and the level of severity of the burn and can require several types of BMPs to be implemented in order to minimize erosion. Fortunately, many Western Chapter members are experienced with erosion and sediment control products, as well as seeding, that can be applied to mitigate erosion and promote new vegetation growth. If you need guidance with post-fire erosion issues, look to the Products & Services Directory for resources. The Directory can be found [here](#).

Many developments disturb soils without understanding the importance of final stabilization or how proper implementation of erosion and sediment control BMPs can result in responsible development stewardship. The importance of erosion mitigation is an essential and significant component of keeping sediment on-site and is also a focus of the Western Chapter's upcoming field tour.

The Truckee & Tahoe Restoration Project Tour is planned for this August. This tour visits three separate restoration projects and a bike trail project and will discuss BMPs, dealing with invasive and protected species, construction challenges, and erosion control implementation. While the field tour is discussed further in this newsletter, I wanted to take a moment to highlight the work behind the scenes of this event. Western Chapter's Events Committee, which is made up of volunteers, has been hard at work in coordinating and planning this event since last fall. The Committee has been busy from developing the agenda, scoping projects, and organizing tours, to coordinating buses and lunches, and establishing tour budget and fees. As has been said before, volunteers are a key to the success of the Western Chapter's events, and we are blessed with great ones. Thank you to all of those involved in making this event happen.

Please consider supporting the Western Chapter by signing up for the field tour event, signing up your staff to attend the event, or sponsoring future educational events. The success of these types of events helps promote future event opportunities.

Sincerely,

**Melanie Sotelo**, MSE, CPESC, CPSWQ  
President, Western Chapter  
International Erosion Control Association



**Melanie Sotelo MSE,  
CPESC, CPSWQ  
WCIECA President  
[msotelo@cascinc.com](mailto:msotelo@cascinc.com)  
CASC Engineering &  
Consulting**

## TRUCKEE & TAHOE RESTORATION PROJECTS TOUR – JULIE ETRA

The Western Chapter of the IECA is pleased to announce the first post pandemic educational event which will take place on August 4 and 5, 2022. We will return to the beautiful Sierra Nevada, including the Martis Valley in Truckee and the Upper Truckee Marsh in South Lake Tahoe. We have updated components of this tour following our spring newsletter.

Upper Truckee Marsh Restoration Project. South Lake Tahoe, CA. This large and complicated wetland restoration and wildlife habitat water quality improvement project took 10 years of planning. The second year of construction was completed in late October of 2021. Three years of post-construction plant maintenance and monitoring will follow the completion of construction in 2022. The State of California is the owner and the project proponent is the California Tahoe Conservancy <https://tahoe.ca.gov/upper-truckee-marsh/>. The first inspection in April 2022 revealed overall success with the revegetation treatments at the dune and interdune areas. The former sailing lagoon was backfilled and restored as well as the access road off the Tahoe Keys POA Corps Yard and the Pilot Channels. At the Dune/Interdune and Sailing Lagoon sites, there has been excellent establishment of willow poles and fascines, and surprising survival and new growth of Woods' rose and black cottonwood despite their small size (they did not meet the specification for size or quality). Frost heaving of perhaps 15% of the wetland plugs had occurred, with some plugs completely exposed on the soil surface. This is not surprising due to the late planting dates and saturated soils in late October 2021. Due to the low lake level this spring, anticipated ground water and ponding had not occurred, and the irrigation was reactivated in late May. This proved to be a bit complicated and will be discussed during the tour. The specifications required 100% survival, with replacement of all dead plants. A count will be conducted in mid-June and a plan submitted to the State of California for review. In addition to the 20 acres of restoration described above, we will visit the access road, the Pilot Channels, and the Lower West Side project, built 20 years ago.

### Martis Valley, Truckee, CA

The Mainstem Martis Restoration Project was also inspected in the spring of 2022. The tour will additionally include observation and discussion of the installation of plants culturally relevant to the Washoe tribe, which were mitigated for grading conducted in 2019 at the project's inception. A total of 49 Beaver Dam Analogs (BDA) were built and installed over three years, beyond the original contract specifications. These have proven highly successful and resulted in spreading of flows in support of an expanded floodplain.

Segment 1B2 of the bike path was completed in the fall of 2022 and as of this newsletter segment 3A is still under construction. We will discuss construction sequencing and revegetation work installed under less-than-ideal conditions.

Our final stop, after Middle Martis, will be lower reach 5 of the Mainstem Martis project.



Photo 1. Upper Truckee Marsh Dune/Interdune and former Sailing Lagoon



Photo 2. Pilot Channels



KELLEY EROSION CONTROL, INC.  
2395-B Tampa Street • Reno, NV 89512



STOVER SEED  
SINCE 1922



StormWater  
SPECIALISTS



JRD  
IMAGING



OAKRIDGE  
LANDSCAPE



The Land Stewards



## Truckee & Tahoe Restoration Projects Tour

**AUGUST 4 & 5, 2022**  
9:00 AM-4:00 PM 12 PDHs



LAKE TAHOE

**\$225 IECA Members**  
**\$275 General**

<https://allevents.by/WC-IECA>



WESTERN  
BOTANICAL  
SERVICES, INC.



EARTH SAVER  
Erosion Control Products



SUSTANE  
Naturally...



Storm Water  
Resources



BT Consulting  
INCORPORATED



GRASSROOTS  
ENVIRONMENTAL



Erosion Control Products Corporation  
APEX Reenco

### Truckee & Tahoe Restoration Projects Tour

The Western Chapter of the IECA is pleased to announce the first in-person post-pandemic educational event which will take place on August 4th & 5th, 2022. We will return to the beautiful northern Sierra Nevada, including the Martis Valley in Truckee and the Upper Truckee Marsh in South Lake Tahoe. Various agency spokespersons and additional experts from the private sector will showcase these successful restoration, recreation, and erosion control projects that highlight our mutual disciplines and interests. We will make **eight stops at six different projects** (updated) and discuss appropriate BMPs, flood analysis, invasive weeds, rare plants and protected species, biotechnical engineering, construction challenges, archaeological constraints and considerations, safety issues, wildfire, and the nuances of public works projects. Learn from the best and the smartest in the business.

#### Tour Details

**NOTE:** *Buy your tickets and book your accommodations now* - Summer around the Lake is always busy and it is Hot August Nights in Reno!

**Aug. 4 Meet:** Soaring Way – Raley’s (10001 Soaring Way, **Truckee, CA 96161**) **9:00 a.m.**  
Load onto a Motor Coach Bus.

**Aug. 5 Meet:** T.J. Maxx parking lot Highway 50 and Highway 89, **South Lake Tahoe (the 'Y')** **9:00 a.m.**  
Load onto a Motor Coach Bus.

**Social:** BYOP (Buy your own pizza) at [Zano's Family Italian and Pizzeria](#). Bring cash to pay for your meal.

Box lunch is included each day, along with beverages, water, and snacks. The lunch options will be sent to registrants two weeks before the tour. Refunds up to 14 days before the event.

**More Details and Tickets for Truckee & Tahoe Restoration Projects Tour can be found [here](#).**

## STOVER SEED TURNS 100 – JEANNE DUARTE

In West Los Angeles in the early 1900s, Floyd Stover gained experience working at his father's landscape supply business. In 1922, he founded the Stover Seed Company in Santa Monica, selling lawn and flower seeds, onion sets, and even gopher traps to landscape contractors and nurseries. In 1949, Floyd moved Stover Seed to the wholesale district in downtown Los Angeles and later sold it to Lofts Seed Company. In 1971, David Knutson (the General Manager of Stover) purchased the company from Lofts, and it remains in the Knutson family to this day. In 2015, the company relocated to its current, more modern facility in the Sun Valley community of Los Angeles. And this year, we celebrate the 100th anniversary of the Stover Seed Company!

In 2021, the industry lost David Knutson, but we are so lucky to have his son, Stephen Knutson, along with John McShane, taking the reins and keeping a 100-year tradition going.

Stover's California golf market includes courses from the Bay Area down to San Diego, Greater Los Angeles Basin, Palm Springs, San Joaquin Valley, and the Sierra Nevada mountains. They have consulted and supplied many recent turf reduction and conversion projects throughout the State with specialty turf grasses, natives and/or wildflowers. Their portfolio has grown to include such venerable courses as Pebble Beach GL, The Olympic Club, The Los Angeles CC, Riviera CC, and many others.

Stover Seed Company continues to support many aspects of the industry. Whether it is contributing to turf grass research at UC Riverside, a membership with the Sports Turf Managers Association, an active membership in numerous California chapters of GCSAA, and an active membership in Western Chapter IECA. Stover views their company business model as one of active participation.

Western Chapter is lucky to have Stephen Knutson on the board, helping to move the Chapter forward and provide services and benefits to the members.



## WESTERN CHAPTER BOARD OF DIRECTORS (BOD) ELECTION

Election will begin June 23 and end on July 23.

**Increase your  
involvement in and  
broaden your impact on  
our industry**



*Please consider either nominating a qualified person or running for a director position yourself (three-year term). Deadline June 20.*

Qualification: Must be a Western Chapter member (for at least one year).

Email

[westernchapter@gmail.com](mailto:westernchapter@gmail.com)  
for more information.

## REGIONAL NEWS FROM IECA

### TOP NEWS

#### [\\$25.3B Water Resources Development Act clears House](#)

A \$25.3 billion bill for infrastructure projects, including storm and flood protection, ecological restoration, and harbor dredging, passed easily in the House and now goes to the Senate, where a similar bill won committee approval last month. The House-passed Water Resources Development Act would help fund 22 projects valued at \$39.9 billion planned by the US Army Corps of Engineers. **Full Story:** [Engineering News-Record \(tiered subscription model\)](#) (6/8)

#### [Hawaii using biochar to restore forest, wetlands](#)

Biochar, a high-carbon form of charcoal, is being used in Kaho'olawe in Hawaii to begin to bring back a dry-land forest and wetlands once native to the area. Kaho'olawe Island Reserve Commission Natural Resource Specialist James Bruch discusses the effort to counter years of bombing, overgrazing and wildfires that have led to heavy wind and topsoil erosion. **Full Story:** [Hawaii Public Radio](#) (5/23)

#### [Interior Dept. allots \\$240.4M for 46 Western water projects](#)

The Interior Department has designated \$240.4 million from the federal infrastructure law for 46 water infrastructure projects in 11 Western states. "As Western communities face growing challenges accessing water in the wake of record drought, these investments in our aging water infrastructure will safeguard community water supplies and revitalize water delivery systems," Interior Secretary Deb Haaland said. **Full Story:** [The Hill](#) (5/9)

#### [Earmarks fund previously ineligible flood projects](#)

The federal budget for fiscal 2022 contains millions of dollars in earmarks for flood control and coastal resilience projects, including one each in Washington state and Florida that were previously deemed ineligible for Federal Emergency Management Agency funding. Using earmarks to fund projects ineligible for FEMA support "shows that not only can projects from well-connected communities skip to the front of the line, but also that they can circumvent the eligibility requirements that FEMA has put in place," said Anna Weber, a Natural Resources Defense Council senior policy analyst. **Full Story:** [E&E News](#) (4/4)

### POLICY & REGULATION

#### [CA. tree clearing, stream damage draws \\$3.8M fine](#)

Hugh Reimers' Krasilsa Pacific Farms damaged wetlands and streams by clearing oak forests on 40 acres near Cloverdale, the North Coast Regional Water Quality Control Board ruled. The California agency is fining Krasilsa Pacific \$3.8 million for failure to restore the waterways. **Full Story:** [The Fresno Bee \(CA.\) \(free registration\)](#) (5/26)

#### [Regan: EPA, USACE to continue work on WOTUS rule](#)

The Environmental Protection Agency and US Army Corps of Engineers will move forward with plans to define which waterways are afforded federal protection under the Waters of the US rule even as the Supreme Court prepares to take up the issue, according to EPA Administrator Michael Regan. "We believe our rule will be in a position to respond and adjust to the Supreme Court ruling," Regan said. **Full Story:** [Engineering News-Record \(tiered subscription model\)](#) (5/11)

Check out the [IECA Resource Library](#) and [eHub](#) for all your educational needs!

Western Chapter Past [Webinars](#) can be viewed on demand.

*Post-Fire Run-Off Water Quality Monitoring Studies* (Online)

*Stormwater Compliance on Construction Sites Through Teamwork* (Online)

*Wildfire Planning and Remediation in the Western US* (Online)

## EROSION/SEDIMENT CONTROL

**NV. offers grants to improve Lake Tahoe water quality**

The Nevada portion of the Lake Tahoe Basin stands to benefit from new grants being offered by the Nevada Division of State Lands for improving water quality. Eligible projects will address stormwater runoff affecting bodies of surface water or the lake itself. **Full Story:** [Nevada Public Radio](#) (6/7)

**Hawaii, county move to preserve erosion-prone watershed**

Hawaii's Maui County and the state government are moving ahead with the acquisition of about 257 acres in Ma'alaea to help curb high rates of erosion and reduce the threat of fires. Ownership of the Pohakea Watershed Lands will eventually be transferred to the state Department of Land and Natural Resources in an effort to not only protect the watershed but also promote ocean water quality and preserve coral reefs in Ma'alaea Bay. **Full Story:** [Maui Now \(Hawaii\)](#) (5/6)

**Barrier to protect 116-year-old temple in Hawaii**

Encroaching seas endanger the 116-year-old Mantokuji Soto Zen Mission and cemetery on the Hawaiian island of Maui, but a temporary barrier is being planned to deal with the threat. Geotextile fabric containers will be installed on the shoreline to be filled with sand, ultimately achieving a height of about 6 feet. **Full Story:** [The Maui News \(Wailuku, Hawaii\)](#) (4/14)

**San Francisco to build shields against rising seas**

The Port of San Francisco and the Smithsonian Environmental Research Center plan to combat sea-level rise by installing a series of seawalls along the Embarcadero with special tiles designed to build biodiversity and attract native aquatic species. "While the Bay Area has had a strong focus on ecological approaches, most of these efforts have focused on land-based solutions, such as marshes and coarse grain beaches," said researcher and ecologist Andrew Chang. **Full Story:** [SFist \(San Francisco\)](#) (4/9), [KRON-TV \(San Francisco\)](#) (4/9)

**CA city grapples with longstanding flood problem**

Severe storms routinely bring flooding to a large section of the Leucadia community in Encinitas, CA., something that residents have come to expect and the city acknowledges by paying for the damages caused. Encinitas has attempted to address the problem by diverting excess stormwater to the top of a beach bluff and piping it to the ocean, but the strategy -- which injects pollution into water near the beach -- hasn't solved the problem, and now questions of legal liability are being raised. **Full Story:** [The Coast News \(Encinitas, CA.\)](#) (3/14)

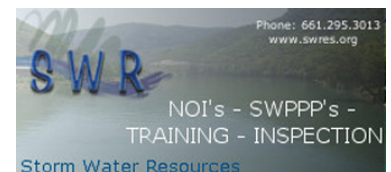
---

## TRAININGS, DATES, & MEETINGS

**PLEASE Don't WAIT Buy Your Ticket TODAY!**

**Book your accommodations now!**

August 4 & 5, 2022 - [Truckee & Tahoe Restoration Projects Tour](#). 9:00 AM - 4:00 PM 12 PDHs. Plan to attend and make it a weekend with the family!





## STORMWATER MANAGEMENT

### [Coastal erosion model adjusts for infrequent storms](#)

Extreme total water levels are used in a new methodology to assess the chance of erosion and flooding along the West Coast, where extreme water levels are rare. The model was developed due to the infrequency of storm surges on the coast, but it can be used in other coastal areas, too. **Full Story:** [Nature](#) (5/23)

### [Underground basins to catch stormwater in CA. city](#)

Sacramento, CA., will use \$3.5 million in federal funding to install two new underground basins that will capture stormwater and help reduce flooding. "Our city's underground infrastructure is often forgotten, but it is the workhorse of what makes our city run," said Rep. Doris Matsui, D-CA. **Full Story:** [The Sacramento Bee \(CA.\) \(tiered subscription model\)](#) (5/8)

### [Stormwater project promises protection for CA. river](#)

Construction is well underway on a project in Long Beach, CA., to transform a highly impervious industrial corridor into a stormwater treatment hub, capable of collecting and diverting more than 40% of urban runoff generated throughout the Lower Los Angeles River Watershed. The [Long Beach Municipal Urban Stormwater Treatment Project](#), expected to become operational in 2024, aims to drastically reduce the flow of untreated stormwater runoff into the Los Angeles River, San Pedro Bay and the Pacific Ocean. **Full Story:** [The Stormwater Report \(Water Environment Federation\)](#) (4/28)

### [Report: Efficiency steps may drastically cut CA. water use](#)

California could support water reliability and slash consumption by over 30% in urban areas by investing in wastewater reuse, runoff collection and water efficiency solutions, according to a report by the Pacific Institute. With the recommended measures, "millions more Californians could see short-term drought relief and longer-term improvements in the reliability of their water supplies," said Heather Cooley, director of research at the institute. **Full Story:** [Los Angeles Times \(tiered subscription model\)](#) (4/12)

### [L.A. agencies propose stormwater capture project at park](#)

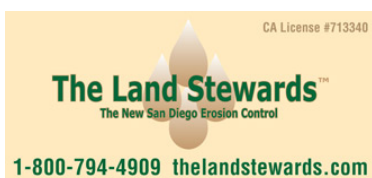
LA Sanitation & Environment and the Los Angeles Department of Recreation and Parks are planning a stormwater capture project at MacArthur Park that would benefit its watershed, Ballona Creek, and Santa Monica Bay. The project would have MacArthur Park Lake capture stormwater and runoff from storm sewers and use newly added wetlands as a filter. **Full Story:** [Urbanize LA \(Los Angeles\)](#) (4/8)



Providing Clients with Innovative Environmental, Engineering, Planning and Surveying Solutions

Offices in Burbank, Cotton, Irvine and Palm Desert

855.383.0101



## REGIONAL NEWS FROM IECA

### WETLANDS & COASTAL RESTORATION

#### Plantings to bolster Hawaiian dune

Varieties of native plants are being introduced to help restore and preserve a key protective dune in front of Kahana Village in West Maui, Hawaii. The plantings duplicate successful efforts in nearby areas. **Full Story:** [KHNL-TV/KGMB-TV \(Honolulu\)](#) (5/10)

#### Funding would conserve small wetlands, flood rice fields

Farmers in five prairie pothole states would be paid to conserve small wetlands and farmers in California and four Southern states would be encouraged to flood post-harvest rice fields under a \$375 million Environmental Quality Incentives Program initiative proposed by conservation groups. The funding would be administered by the Natural Resources Conservation Service under the Migratory Bird Resurgence Initiative. **Full Story:** [Agri-Pulse \(tiered subscription model\)](#) (4/6)

#### Study: Action needed to save CA. coastal wetlands

New levees and elevating some wetlands could serve to stem the threat of rising seas to Huntington Beach, CA's Bolsa Chica wetlands and the habitat they provide, a new report says. The 1,400 acres of wetlands have sunk as a result of decades of oil drilling, adding to the urgency for action to maintain the estuary, according to the report. **Full Story:** [The Daily Democrat \(Woodland, CA.\)](#) (4/5)

#### CA. communities plan structures against rising seas

Design work for levees and seawalls will begin this year in an effort to protect Millbrae and Burlingame, CA from rising seas. Early plans call for structures rising 6 feet above the current level designed to shield against a 100-year flood. **Full Story:** [San Mateo Daily Journal \(CA.\) \(tiered subscription model\)](#) (3/26)



**Advertise Your Business Here**

## SEND US YOUR VIDEOS AND PICTURES

A Chapter Promotional Video will be created soon. We need pictures and/or videos that highlight erosion control and landscapes in CA, AZ, HI & NV! Send in your videos and pictures for Chapter promotion. If we use yours, we will send you a \$25 gift card. Email or send a link to [westernchapter@gmail.com](mailto:westernchapter@gmail.com).



## PROFESSIONAL LISTINGS

**Dirttime.tv** is an affiliated brand of [Salix Applied Earthcare LLC](#), formed in 1996 by John McCullah. John has been involved in Watershed Management for 30 years, becoming a certified erosion specialist in 1986. The firm's work involves consulting, training, design/build of stream restoration, bioengineering, education, and awareness. Salix has published design guidance manuals, books, popular and technical articles, and informative case studies. Dirttime.tv has produced over 40 Dirt Time videos. Selecting and watching the clips of your choice then taking tests online is a popular way to earn CEUs. Visit [www.dirttime.tv](http://www.dirttime.tv) regularly for 'how to' info, tips, and blogs.

**Earthsavers Erosion Control Products** is the home of the "Original Rice Straw Wattle." Our certified weed-free wattles have been tested for sediment retention at San Diego State University and proven in field studies by Caltrans and numerous other agencies. Earthsavers wattles are available in 3 diameters, photodegradable netting, or 100% biodegradable burlap. Additionally, [Earthsavers](#) is a master distributor for a full line of erosion & sediment control products, geosynthetics and more. Our network of distributors provides local access to premium BMPs and Earthsaver's experienced staff can provide superior technical support to our distributors and their customers and specifiers.

**Kelley Erosion Control, Inc.** was established in 1983 is recognized throughout Nevada and California as a leader in the industry. The company has an excellent reputation known for quality, competency, solutions, innovative ideas, cutting edge technology, excellence, and client satisfaction. Services include: hydroseeding, site preparation, dust control applications, BMP's, revegetation and project maintenance, site winterization, wetland mitigation, stream channel stabilization, planting and irrigation, mining reclamation, soil stabilizer applications, biotechnical applications, and fire restoration/rehabilitation. Phone (775) 322-7755; Fax (775) 322-6606. Contact – Claudia Chambers CPESC, CISEC, QSP [Claudia@kelleyerosioncontrol.com](mailto:Claudia@kelleyerosioncontrol.com). Visit us at [www.kelleyerosioncontrol.com](http://www.kelleyerosioncontrol.com).

**LSC Environmental Products** exists to solve some of the industry's most persistent environmental challenges, such as erosion, revegetation, odor, dust, and waste cover, through the application of our spray-applied coatings. You probably know LSC as the "ADC guys," but we are more than that with the acquisition of Terra Novo, Inc., (best known for their EarthGuard® products); and have served the erosion and sediment control industry for almost 20 years. We are excited to offer new solutions, including soil amendment, site winterization, intermediate cover, and special waste that we believe can benefit virtually any site.

**Nedia Enterprises** manufactures a complete line of erosion control, sediment control, and bioengineering products that are made primarily from natural fibers. Committed to the conservation of the environment, we are constantly striving to develop products that contribute to its enhancement and protection. Our products are subject to stringent quality control measures that meet, or exceed, industry standards. [Nedia](#) offers sound technical advice on product selection and installation, with a thorough understanding of the benefits and limitations of the products. A large inventory of products in several distribution centers across the country facilitates cost-effective and timely delivery of our products. Contact 888-725-6999 or email [info@nedia.com](mailto:info@nedia.com).

**Rocky Mountain Bio Products** supplies organic bio-fertilizers, natural soil conditioners, and soil amendments. Biosol Forte is an organic fungal and bacterial biomass from penicillin production, with unique, stable, and long-lasting nutrients for rebuilding all types of soil for revegetation. Menefee Humate is a natural soil conditioner for plant cell and root development. MycoApply mycorrhizae fungus is the amendment that aids in expanding the plant's root mass 100 to 1000 times larger, which helps plants be healthier and handle environmental stress. Our PermaMatrix is a Biotic Soil Amendment, is a topsoil replacement/alternative. Visit: [www.WEFIXDIRT.com](http://www.WEFIXDIRT.com) for product and distributor information.

**NV5** is a multi-disciplinary engineering company that is a one stop for most of your development and engineering needs. Engineering and Professional Services include (but not limited to): Civil, Environmental, Construction, Mechanical, Survey, Building Inspection, Geophysical, and Geospatial Surveys. With offices in Arizona, Nevada, California, and throughout the country, we are here to serve all your environmental and engineering needs. In the Erosion and Sediment Control Industry we focus on SWPPP compliance services (CA QSDs and QSPs, owner representation, inspection services, LID/WQMP engineering designs, etc.). Contact the Long Beach, California office for more specific details. (562) 495-5777 [Matthew.Renaud@nv5.com](mailto:Matthew.Renaud@nv5.com).

## PROFESSIONAL LISTINGS CONTINUED

**Pacific Coast Seed** is Northern California's premier supplier of grasses and wildflowers native to California, turf grass seed, and other erosion control materials such as fertilizers, mulches, and soil amendments. We provide seed and other materials for diverse applications including restoration, reclamation, revegetation, ornamental landscaping, and erosion control. We offer specialty seed collection from site-specific sources. For more information check out our website [www.pcseed.com](http://www.pcseed.com) or contact us at (925) 373-4417, or [info@pcseed.com](mailto:info@pcseed.com).

**Filtrex** is the leader in sustainable products for erosion & sediment control in industries like commercial construction, homebuilding, post-fire remediation, power & utility, solar, municipalities, DOT, and more. SiltSoxx™ compost filter socks are a high-performance, passive filtration BMP that comply with most state and federal agencies including USEPA, AASHTO, USDA NRCS and US ACE. Also available in two 100% natural, biodegradable mesh materials, eliminating the need for field removal – SiltSoxx NATURAL ORIGINAL and SiltSoxx NATURAL PLUS. Visit <http://www.filtrex.com> for free design & installation specifications, CADs, submittal forms, and webinar training.

**Reno Tahoe Geo Associates, Inc.** – (Formerly Marvin E. Davis & Associates) focuses on the challenging issues of the Tahoe Basin and Northern Nevada/California terrain. Our professionals provide a diverse and solid background in geotechnical engineering, specialized engineering design, erosion control services, construction and forensic inspection services, materials testing, and regulatory/compliance issues to enable project approval. Phone (775) 853-9100 or visit us at <http://www.rtgeo.com/>.

**Sustane Natural Fertilizer** — For over 30 years of continuous operation, [Sustane Natural Fertilizer, Inc.](http://www.sustane.com) has produced the highest quality natural organic fertilizers and soil amendments distributed in the U.S. and exported to 50 countries worldwide. Sustane Natural Fertilizer maintains and operates its U.S.E.P.A. permitted compost site, manufacturing facility, and corporate offices from Cannon Falls, Minnesota. Sustane fertilizers and soil amendments provide readily available, balanced nutrition with beneficial microbiology to provide the basic soil components for exceptional plant establishment and long-term sustainability. Call 800-352-9245 to speak with a Sustane Regional Specialist, or with our International Team Leader.

**Western Green** (and its associated erosion control brands North American Green and Western Excelsior) is the industry leader for manufactured erosion and sediment control products, and holds the industry's most complete product line, ranging from short term ECBs to permanent HPTRM Anchored Systems. Whether your site needs short-term protection or permanent vegetation reinforcement, trust Western Green's quality brand products to handle any erosion issue you may face.

**Linwood Supply, Inc.** distributes the tools you need for erosion control and storm water management including Erosion Control Blankets, TRM and HP-TRM, HydroFiber™, Coir products, organic fertilizers, native and grass seed; plus, for oil spill remediation - rubberized booms, mats, and filters. Other services include written pesticide recommendations and soil testing. We will always provide you with the level of service and professionalism you deserve. Linwood Supply, Inc. is a certified small business based in California. ***If Your Storm Water is as Clear as Mud™*** – Please call us at (707) 678-5087, or visit us at [www.linwoodsupply.com](http://www.linwoodsupply.com).

**SunWest Golf and Reclamation, Inc.** is an Arizona-based hydroseeding and revegetation services company formed in 1997. The owner, Roby Everhart, has over 35 years' experience throughout the Southwest. SunWest has revegetated thousands of acres and we specialize in hydrostolonizing of golf courses and athletic fields. We have been involved in the grassing of over 300 golf courses in Arizona. SunWest is an owner operated corporation. The owner is involved in all day-to-day operations, to assure positive working results at every project. Roby Everhart and his crew are some of the most experienced people in the industry. His work force has a full understanding of the company's goals and commitments.

**HEADS UP! [2023 IECA Annual Conference and Expo](https://www.ieca.org) Kansas City, MO**