



International Erosion Control Association

Serving Erosion Control Professionals in Arizona, California, Nevada, and Hawaii

IN THIS ISSUE

President's Message	1
Weed Abatement to Prevent Wildfires	2
Board of Directors Candidates Needed	2
Seeding After a Wildfire	3
Earn PDHs at the Western Virtual Connection	4
Products & Services	4-6
Regional News	5-7
2021 Annual Meeting of the Members Recap	6
2020 IECA Annual Report	6
IECA Resource Library and eHub	7
Upcoming Webinars, Trainings, & Meetings	8
Thank You to Our Virtual Connection Speakers!	8
2021 Award Winner: Western Chapter	8
IECA Next Annual Conference	9
Professional Listings	9-10

PRESIDENT'S MESSAGE

Dear Western Chapter Members,

I hope this newsletter finds you, your families, and colleagues safe and healthy.

This is always a good time of year to take inventory of your professional skills, training and learning opportunities, and business needs to be sure that you are staying on top of that which helps make you and your team successful.

Education is at the top of the Western Chapter's list of priorities. Our goal is to bring our members the most relevant and meaningful learning information available, and to provide a foundation to grow your career within these industries. Teamwork is at the forefront of any business to be successful. Whether you're a landowner, public agency, design engineer, landscape architect, contractor, supplier, or stormwater/site inspector, the importance of communication and teamwork will always provide the best opportunity for success.

I truly hope that we are meeting your needs with the events that we have been offering to our members. If you have any specific educational events or topics that you would like the chapter to cover, please let me know.

Our chapter events and education committees look forward to hosting a field training event in the near future. The ability to get in the field on a project site, observe BMP techniques, discuss on-site challenges and successes for that particular project site, and network with your colleagues is a valuable training tool that has been sidelined due to COVID safety requirements.

In the meantime, our next event titled, "Stormwater Compliance on Construction Sites Through Teamwork" is scheduled for May 20, 2021. Our education committee has put together a group of industry experts to provide you with the latest relevant information happening in our industry. Go to the IECA eHub website to register - <https://ehub.ieca.org/products/ieca-western-virtual-connection-stormwater-compliance-on-construction-sites-through-teamwork>.

Sincerely,
Danny Reynaga, CPESC, QSD
President – Western Chapter IECA



Danny Reynaga
CPESC, QSD
WCIECA President
DReynaga@profileproducts.com
Profile Products LLC.
760-330-1848

WEED ABATEMENT TO PREVENT WILDFIRES (USDA – NRCS)

Have you secured your homes or projects for Fire Season? Here at Oakridge Landscape, we are in the business of fire prevention, especially since we are in Southern California, a hot spot for wildfires.

We take precautions to ensure that your projects and homes are prepared for wildfire season. Not only does it help with fire damage, but it also helps your bottom lines.

Here are some steps to take when it comes to Brush Fire Prevention:

- Create a defensible space around your home, based on local fire codes.
- Keep flammables away from your home.
- Replant with fire resistant plants
- Check with your HOA or community for any evacuation plans and plan an escape route for your family.
- Store wood away from your home as well as gasoline tanks, propane tanks, gas barbecue grills, etc.

Oakridge Landscape works with our clients to provide weed abatement and fire prevention expertise and to comply with all municipal and fire codes. The company has more than 500 employees who provide 24/7 services in erosion control, construction, maintenance, arbor care and design from 4 offices located within the Southern California areas.

For decades, Richard has been one of the first on the scene to assist with new developments, or to mitigate disasters on established developments. He has over 40 years of experience in the construction industry, of which 20 years were in the high-rise construction/general contracting and the last 20 have been specializing in erosion control and SWPPPs. Richard is committed to raising awareness in the community and industry about the importance of managing SWPPPs.



Richard Dunbar
General Manager,
Erosion Control
Oakridge Landscape
richard@oakridgelandscape.net
818-612-8038

BOD CANDIDATES NEEDED!

Will you run? Do you know a member who would be perfect?

Please consider either nominating a qualified person or running for a director position yourself! Each summer, three of nine Western Chapter Board full-term Director positions (three-year term) are up for election. This is one of the most fulfilling ways to increase your involvement in and broaden your impact on our industry.

Qualifications: Must be a Western Chapter member (for at least one year).

Key responsibilities for the Directors include managing and administering the Chapter as a not-for-profit corporation, creating educational opportunities for the Chapter members, helping the Chapter and IECA grow, and responding to member questions and concerns. The time commitment includes quarterly meetings and subcommittee work totaling ~ 5-10 hrs. per quarter.

Send your nomination OR submit a self-nomination with a photo and a candidate statement (a 200-word, electronically formatted, description of your work/background and an explanation as to why you want to serve on the Western Chapter Board of Directors) by June 11 to Cyndi Brinkhurst the Administrative Assistant at westernchapter@gmail.com.

SEEDING AFTER A WILDFIRE (USDA – NATURAL RESOURCES CONSERVATION SERVICE)

Loss of vegetation leaves land vulnerable to increased runoff, erosion, and sedimentation. It also encourages weeds, degrades habitat, and impairs forest regeneration. Re-establishment of permanent vegetation provides long-term erosion control, may restore lost habitat values, and may help suppress noxious weed invasion after a wildfire.

However, it takes time and favorable climatic conditions to establish vegetation from seeding operations. Therefore, it may be 6 months or a year before the full benefits of seeding are realized. Seeding must be combined with other land treatments, such as mulching, to provide an immediate erosion control benefit and to assure the seed remains in place until it can germinate.

Here are a few key points to think about after a wildfire.

- Seed grasses & forbs (other non-woody plants) in late fall or winter.
- Severely burned sites should be seeded to decrease the likelihood of erosion and sediment movement down slopes and to discourage weed invasion.
- Most seeding is done by hand or by aircraft.
- Perennial grasses and forbs are slower to establish but provide a long-term cover for reseeded sites; small grains are useful when quick establishment is key.
- Mulching will stabilize the soil surface to prevent movement of soil particles & loss of seed; use straw or grass hay mulch.

Stephen Knutson, CEO of Stover Seed Company has been with the Southern California based company for 31 years.

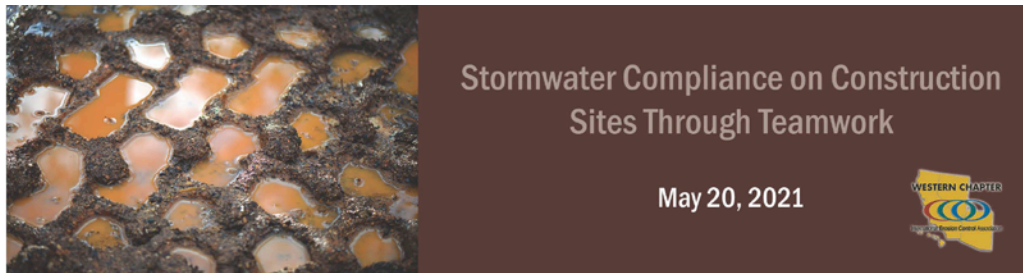
For nearly 100 years, the people of California-based Stover Seed have listened to their customers. Whether you're a professional, turfgrass manager, erosion control specialist, or an enthusiastic home gardener, you'll be able to find what you're seeking at Stover Seed. Because we have the broadest range of products available, we have the right seeds for your region. We invite you to think of us as old friends you can depend upon for new and helpful seed solutions.

Oakridge Landscape and Stover Seed Company have been working together for many years, cooperating to prevent and treat wildfires.

Thank you to Richard Dunbar and Stephen Knutson for their valuable information, time, and dedication to erosion control.



EARN PDH AT THE IECA WESTERN VIRTUAL CONNECTION: STORMWATER COMPLIANCE ON CONSTRUCTION SITES THROUGH TEAMWORK



IECA Western Virtual Connection: Stormwater Compliance on Construction Sites Through Teamwork Thursday, May 20, 2021

Calling all stormwater professionals! Envision the future of stormwater compliance as a cooperative team effort involving contractors, owners, agencies, and consultants to promote practical stormwater management programs on construction sites. This panel presentation will demonstrate how stormwater compliance can be accomplished on any construction site by incorporating a few inexpensive management strategies and organizational tools. Our panel, consisting of agency inspectors, and private sector stormwater consultants will demonstrate how to incorporate the different perspectives into an agency friendly, stormwater management program that is easy to implement and maintain; ensuring the stormwater management program runs smoothly throughout the life of a project.

Program Learning Objectives – Adopt a teamwork approach to stormwater management on your site to foster a smooth and concerted relationship between all parties involved. The panel will discuss:

- Incorporating stormwater management from pre-planning through post-construction.
- Planning and budget for the project SWPPP requirements during the pre-construction process.
- Learning how to focus BMP strategies on the big-ticket items that attract negative enforcement attention.
- Creating an organized and comprehensive onsite stormwater compliance center for ease of document management and to demonstrate knowledge of the required document maintenance.

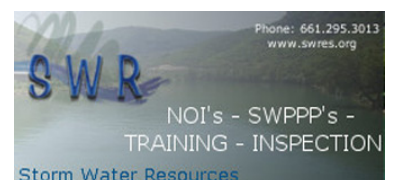
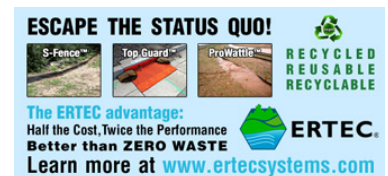
In addition, the session will discuss communication do's and don'ts between agency inspectors and contractors onsite, while posing questions to the audience and getting feedback from the different panel members on how to promote positive communication and relationship.

COST: FREE Members, \$25 Nonmembers

HOSTED BY:



Register Now at <https://ehub.ieca.org/p/Western2021>





REGIONAL NEWS FROM IECA

TOP NEWS

[Report shares how US can meet 2030 conservation goals](#)

The Interior Department and other federal entities have released a report with ideas on how the Biden administration can achieve its 2030 goal to conserve at least 30% of US water and land. The report recommends allocating conservation grants to tribal communities and expanding fish and wildlife habitats and corridors, but it "is only the starting point," officials said.

Full Story: [The Associated Press](#) (5/6)

[Earn PDH at the IECA Western Virtual Connection: Stormwater Compliance on Construction Sites Through Teamwork](#)

Attend this panel discussion on May 20 to understand how stormwater compliance can be accomplished on any construction site by incorporating inexpensive management strategies and tools and earn 1.5 professional development hours. [Register now!](#)

[The MS4 Conference early bird registration deadline is next week](#)

Don't miss your opportunity to save on conference registration for the 7th Annual Municipal Wet Weather Stormwater (MS4) Conference to be held in person in Huntsville, AL, June 7-9. The registration price goes up after May 17. [Register now!](#)

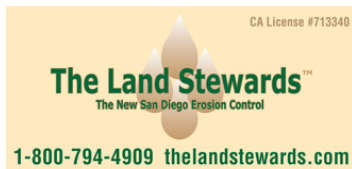
POLICY & REGULATION

[CA university tackles coastal policy](#)

The University of California Santa Barbara will be using \$680,000 in funding from two grants to improve coastal policy under Charles Lester, former executive director of the California Coastal Commission. The challenges are greater than ever, Lester says, as the state is "increasingly struggling with social changes, such as growing inequality and gentrification along the coast," which along with rising seas and erosion threaten to "fundamentally undermine all of the great work we've been doing." **Full Story:** [University of California, Santa Barbara](#) (5/6)

[EPA could provide clarity on SCOTUS' groundwater ruling](#)

The Supreme Court's ruling in County of Maui v. Hawaii Wildlife Fund has left many state officials confused about how to carry it out, so the Environmental Protection Agency could issue a rule clarifying when polluted groundwater is subject to the Clean Water Act. The EPA plans to strike a balance between the Trump and Obama administrations' Waters of the US rules, according to Ken Kopocis, a member of President Joe Biden's EPA transition team. **Full Story:** [E&E News \(free content\)](#) (5/3)



REGIONAL NEWS FROM IECA

EROSION/SEDIMENT CONTROL

Measure sought to deter pool drainage into AZ washes

The flood control district in Maricopa County, AZ, wants the city to pass an ordinance that would forbid releasing water from pools and spas onto the Santa Rosa Wash and other city washes. Repairing the damage from such releases is costly because of the equipment and materials required, and diverts money from projects such as trash removal, says Executive Director David Alley. **Full Story:** [InMaricopa \(AZ\)](#) (3/2)

Plantings proposed to secure CA beach bluff

A project to use native plants to secure the bluff along California's Beacon's Beach will be reviewed by the Encinitas Planning Commission this week. "The overall goal of the restoration program is to create a self-sustaining, native southern coastal bluff scrub habitat that will stabilize soils, lessen erosion along the bluff and trail and enable continued access to Beacon's Beach along the existing trail," the project file says. **Full Story:** [The Coast News \(Encinitas, CA\)](#) (2/10)

Watershed project finished in Hawaii

More than 15,000 feet of fencing for grazing and a new water trough for cattle have been installed with the completion of the Pelekane Watershed project in Hawaii. The work included the designation of photo points to monitor vegetation and virtual events to educate members of the community. **Full Story:** [Big Island Video News \(Hawaii\)](#) (2/1)

Researchers look for insight on wildfires, mudslides

Researchers from the University of California, San Diego, are performing both terrestrial and extraterrestrial soil experiments to develop new tools for the fight against mudslides. "Gravity plays a big role in mudslides, but we do not understand it," UCSD structural engineer Ingrid Tomac said. **Full Story:** [The Stormwater Report \(Water Environment Federation\)](#) (1/6)



Advertise Your Business Here

2021 Annual Meeting of the Members Recap

The 2021 IECA Annual Meeting of the Members took place during the IECA Virtual Annual Conference on February 24. The outgoing IECA President of IECA Region 1, CEO and new President of the newly reunified IECA, discussed exciting new opportunities for members, in addition to taking a look at the past, present and future of the association. Please click [here](#) to view this year's meeting.

2020 IECA Annual Report

The 2020 IECA Annual Report is available for download to learn more about the highlights of the last year.

[Download Report](#)

REGIONAL NEWS FROM IECA

STORMWATER MANAGEMENT

[Tucson, AZ can teach us about green infrastructure](#)

Existing research on green infrastructure often tends to look forward, describing new strategies to make nature-based stormwater solutions a more attractive option for cities as well as facilitate their adoption. New research published in the [Journal of Environmental Policy & Planning](#), however, contends that stormwater professionals can learn something about the gradual process by which cities embrace green infrastructure -- as well as how to accelerate it -- by looking backward. **Full Story:** [The Stormwater Report \(Water Environment Federation\)](#) (5/5)

[Federal funds to benefit 11 NV water projects](#)

Eleven water quality projects across Nevada stand to benefit from \$1 million in Clean Water Act grant funds. Projects that will receive funding include those designed to curb pollution in Lake Tahoe when rain, snowmelt, and irrigation water rushes over developed or otherwise disturbed land. **Full Story:** [The Tahoe Daily Tribune \(CA\)](#) (1/8)

WETLANDS & COASTAL RESTORATION

[Environmental report cleared for CA wetland project](#)

Plans to restore California's Los Cerritos Wetlands advanced with the LCW Authority's approval of an environmental impact report. Another study will be required before work can proceed on the project, which has raised some concerns over the possible destruction of some types of wetland habitat and the cultural rights of indigenous people. **Full Story:** [Gazette Newspapers \(Long Beach, CA\)](#) (1/8)

MS4 MANAGEMENT

[CA using MS4 program to regulate pesticide discharges](#)

Synthetic pyrethroid use is up in California, with the unintended consequence of increasing chemical levels in water supplies. To address the problem, authorities in the state's Central Valley now require localities with MS4 permits to monitor and manage pyrethroid discharges. **Full Story:** [Storm Water Solutions online](#) (4/6)

Check out the [IECA Resource Library](#) and [eHub](#) for all your educational needs!

You did not miss out – our past webinar can be viewed on-demand.



Continuing Education: 4 PDH
Cost: FREE to Members | \$45 Nonmember
Go to <https://ehub.ieca.org/p/Western2020> for info!

UPCOMING WEBINARS, TRAININGS, DATES, & MEETINGS

May 20, 2021 [Stormwater Compliance on Construction Sites - Through Teamwork](#) – **Virtual**. 11:45AM - 1:30PM Pacific Time. Free to Members.

June 4, 2021 [Deadline for Abstract Submissions](#). 2022 IECA Annual Conference and Expo. February 15-18, 2022 | Minneapolis Convention Center | Minneapolis, Minnesota.

June 11, 2021 **Submit Candidate Statement for Board of Directors Election**. See details on page 2.

June 15- July 17, 2021 **Board of Directors Election**.



IECA PARTNERS FOR EXCELLENCE PROGRAM WINNER!

The purpose of the IECA Partners for Excellence Program is to recognize and reward IECA chapters that have taken the initiative to better serve not only the members of their chapters, but also the public in general. Innovation, chapter involvement, measurable results and application are key criteria. We are looking for both process improvements and best practice or model programs to award and recognize. Read through these best practice programs and apply them at your chapter!

[2021 Winner for Outstanding Leadership](#)

Development: Western Chapter

[Leadership Development: Western Chapter](#)

(Adobe PDF File)

Leadership Development: Activities that encourage strong leadership at a chapter level, including volunteer recruitment, developing new leaders, and chapter succession planning, would be included in this category.

THANK YOU TO OUR VIRTUAL CONNECTION SPEAKERS!



Michael Harding -
Environmental Scientist

Todd Thalhamer, PE -
CalRecycle

Radley Ott, P.E., M.S. -
Assistant Director, Butte
County Department of Public
Works

Pete Cafferata - Watershed
Protection Program Manager,
California Department of
Forestry and Fire Protection

Logan Moore - Landscape
Architect, DOT District 2

Brandon Coppedge and **Jay Selby** - Selby's Soil | SSEC
APEX



PROFESSIONAL LISTINGS

Dirttime.tv is an affiliated brand of [Salix Applied Earthcare LLC](#), formed in 1996 by John McCullah. John has been involved in Watershed Management for 30 years, becoming a certified erosion specialist in 1986. The firm's work involves consulting, training, design/build of stream restoration, bioengineering, education, and awareness. Salix published design guidance manuals, books, popular and technical articles, and informative case studies. Dirttime.tv has produced over 40 Dirt Time videos. Selecting and watching the clips of your choice then taking tests online is a popular way to earn CEUs. Visit www.dirttime.tv regularly for 'how to' info, tips, and blogs.

Earthsavers Erosion Control Products is the home of the "Original Rice Straw Wattle". Our certified weed free wattles have been tested for sediment retention at San Diego State University and proven in field studies by Caltrans and numerous other agencies. Earthsavers wattles are available in 3 diameters, photodegradable netting, or 100% biodegradable burlap. Additionally, [Earthsavers](#) is a master distributor for a full line of erosion & sediment control products, geosynthetics and more. Our network of distributors provide local access to premium BMPs and Earthsaver's experienced staff can provide superior technical support to our distributors and their customers and specifiers.

Kelley Erosion Control, Inc. established in 1983 is recognized throughout Nevada and California as a leader in the industry. KEC has an excellent reputation known for quality, competency, solutions, innovative ideas, cutting edge technology, excellence, and client satisfaction. Services include: Hydroseeding, site preparation, dust control applications, BMP's, revegetation and project maintenance, site winterization, wetland mitigation, stream channel stabilization, planting and irrigation, mining reclamation, soil stabilizer applications, biotechnical applications, and fire restoration/rehabilitation. Phone (775) 322-7755 Fax (775) 322-6606. Contact – Claudia Chambers CPESC, CISEC, QSP Claudia@kelleyerosioncontrol.com. Visit us at www.kelleyerosioncontrol.com.

Linwood Supply, Inc. distributes the tools you need for Erosion Control and Storm Water Management including Erosion Control Blankets, TRM and HP-TRM, HydroFiber™, Coir products, organic fertilizers, native and grass seed, plus, for oil spill remediation, Rubberizer booms, mats, and filters. Other services include written pesticide recommendations and soil testing. We will always provide you with the level of service and professionalism you deserve. Linwood Supply, Inc. is a certified small business based in California. ***If Your Storm Water is as Clear as Mud™*** – Please call us at 707 678-5087 or visit us at www.linwoodsupply.com.

LSC Environmental Products exists to solve some of the industry's most persistent environmental challenges...such as erosion, revegetation, odor, dust, and waste cover through the application of our spray-applied coatings. You probably know LSC as the "ADC guys", who we have been for the past 26 years, but we are more than that. With the acquisition of Terra Novo, Inc., who are best known for their EarthGuard® products; and have served the erosion and sediment control industry for almost 20 years. We are excited to offer new solutions, including soil amendment, site winterization, intermediate cover, and special waste that we believe can benefit virtually any site.

Nedia Enterprises manufactures a complete line of erosion control, sediment control, and bioengineering products made primarily from natural fibers. Committed to the conservation of the environment, we are constantly striving to develop products that contribute to its enhancement and protection. Our products are subject to stringent quality control measures that meet or exceed industry standards. [Nedia](#) offers sound technical advice on product selection and installation with a thorough understanding of the benefits and limitations of the products. A large inventory of products in several distribution centers across the country facilitates cost-effective and timely delivery of our products. Contact 888-725-6999 or email info@nedia.com.

Rocky Mountain Bio Products supplies organic bio-fertilizers, natural soil conditioners and soil amendments. Biosol Forte is an organic fungal and bacterial biomass from the penicillin production, with a unique, stable, and long-lasting nutrients for rebuilding all types of soil for revegetation. Menefee Humate is a natural soil conditioner for plant cell and root development. MycoApply mycorrhizae fungus is the amendment that aids in expanding the plant's root mass 100 to 1000 times larger which helps plants be healthier and handle environmental stress. Our PermaMatrix is a Biotic Soil Amendment, is a topsoil replacement/alternative. **Visit:** www.WEFIXDIRT.com for product and distributor information.

PROFESSIONAL LISTINGS CONTINUED

Pacific Coast Seed is Northern California's premier supplier of CA native grasses and wildflowers, turf grass seed, and other erosion control materials such as fertilizers, mulches, and soil amendments. We provide seed and other materials for diverse applications including restoration, reclamation, revegetation, ornamental landscaping, and erosion control. We offer specialty seed collection from site-specific sources. For more information check out our website www.pcseed.com or contact us at 925-373-4417 or info@pcseed.com.

Filtrex is the leader in sustainable products for erosion & sediment control in industries like commercial construction, homebuilding, post-fire remediation, power & utility, solar, municipalities, DOT, and more. SiltSoxx™ compost filter socks are a high-performance, passive filtration BMP that comply with most state and federal agencies including USEPA, AASHTO, USDA NRCS and US ACE. Also available in two 100% natural, biodegradable mesh materials, eliminating the need for field removal – SiltSoxx NATURAL ORIGINAL and SiltSoxx NATURAL PLUS. Visit www.filtrex.com for free design & installation specifications, CADs, submittal forms, and webinar training.

Reno Tahoe Geo Associates, Inc. – Formerly Marvin E. Davis & Associates focuses on the challenging issues of the Tahoe Basin and Northern Nevada/California terrain. Our professionals provide a diverse and solid background in geotechnical engineering; specialized engineering design; erosion control services; construction and forensic inspection services and materials testing; and regulatory and compliance issues to enable project approval. Phone 775-853-9100 or visit us at <http://www.rtgeo.com/>.

Sustane Natural Fertilizer — For over 30 years of continuous operation, [Sustane Natural Fertilizer, Inc.](http://www.sustane.com) has produced the highest quality natural based and organic fertilizers and soil amendments distributed in the U.S. and exported to 50 countries worldwide. Sustane Natural Fertilizer maintains and operates its U.S.E.P.A. permitted compost site, manufacturing facility and corporate offices from Cannon Falls, MN. Sustane fertilizers and soil amendments provide readily available, balanced nutrition with beneficial microbiology to provide the basic soil components for exceptional plant establishment and long-term sustainability. Call 800-352-9245 to speak with a Sustane Regional Specialist or with our International Team Leader.

Western Green, and its associated erosion control brands North American Green and Western Excelsior, is the industry leader for manufactured erosion and sediment control products and holds the industry's most complete product line ranging from short term ECBs to permanent HPTRM Anchored Systems. Whether your site needs short-term protection or permanent vegetation reinforcement, trust Western Green's quality brand products to handle any erosion issue you may face.

NV5 is a multi-disciplinary engineering company that is a one stop for most of your development and engineering needs. Engineering and Professional Services include (but not limited to): Civil, Environmental, Construction, Mechanical, Survey, Building Inspection, Geophysical and Geospatial Surveys. With offices in Arizona, Nevada, California, and throughout the country, we are here to serve all your environmental and engineering needs. In the Erosion and Sediment Control Industry we focus on SWPPP compliance services (CA QSDs and QSPs, owner representation, inspection services, LID/WQMP engineering designs, etc.). Contact the Long Beach, California office for more specific details. 562-495-5777 Matthew.Renaud@nv5.com.

HEADS UP! [2022 IECA Annual Conference and Expo](https://www.ieca.org/conference) February 15-18, 2022 | Minneapolis Convention Center | Minneapolis, Minnesota. Registration opens in early September.

2023 – Pacific Northwest