



International Erosion Control Association

Serving Erosion Control Professionals in Arizona, California, Nevada and Hawaii

IN THIS ISSUE

President's Message	1
Western Chapter Virtual Event Flyer	2
Meet Your New Board Member - Matthew Renaud	3
IECA NEWS IECA Region One and Two Reunification Update	3
Long-Term Member Highlight: David Gilpin	4
Free Content Member Library	4
Products & Services	4-6
Regional News	5-7
IECA Education	6
Upcoming IECA Webinar Series	7
Professional Listings	8-9
NEW! Financial Services Member Benefit!	9
IECA Next Annual Conference	9

PRESIDENT'S MESSAGE

Dear Western Chapter Members,

As we transition into the fall season, I hope this newsletter finds you, your families, and colleagues safe and healthy. We are currently dealing with so many challenges, both personally and professionally as they relate to COVID -19, new construction safety protocols, project delays and supply chain disruptions.

Many of our children are currently learning virtually and we, as parents, are thrust into teacher roles along with the many professional responsibilities that we still must complete. Balancing our priorities and responsibilities has never been more challenging and important.

On top of all of this, we are seeing the start of the most destructive wildfire season on record across the west. These fires have already destroyed much of our landscape and communities and have uprooted our daily lives in various capacities.

We must keep emergency first responders and families directly affected by the wildfires in our thoughts and prayers.

As erosion control & sediment control professionals, we will be responding to these devastating fires by providing our knowledge and resources in the areas of planning and installation of emergency best management practices to protect our communities and water resources.

The Western Chapter has been working to provide our members with resources and educational tools to help assist with these efforts in Wildfire Planning and Reclamation solutions. We have collaborated with Region 1 of the IECA to develop and offer an upcoming virtual connection workshop with leading industry experts who have over 25+ years of experience with post-wildfire planning and implementation of erosion & sediment control solutions. On September 29, October 6th & 13th, we will be offering this content to you. I hope you will join us in these three, approximately one-hour presentations to learn ways to help our communities.

Sincerely,
Danny Reynaga, CPESC, QSD



Danny Reynaga
CPESC, QSD
WCIECA President
DReynaga@profileproducts.com
[Profile Products LLC.](#)
760-330-1848

WESTERN CHAPTER HOSTS VIRTUAL EVENT



IECA Western Virtual Connection: Wildfire Planning and Remediation in the Western US

September 29, October 6 and 13, 2020



IECA Western Virtual Connection: Wildfire Planning and Remediation in the Western US September 29, October 6 and 13, 2020

Hosted by the IECA Western Chapter and IECA Region One, this event offers three live webinars over three weeks that focus on wildfire planning and remediation techniques in the Western US.

Tuesday, September 29 | 11:45 AM - 1:00 PM

- **First Steps Following an Incident of Wildfire: Development of a Hazard Assessment and Mitigation Plan (HAMP)**, presented by Michael Harding, Environmental Scientist
- **Erosion Control and Stormwater Contractor Perspective - Installation and Lessons Learned**, presented by Brandon Coppedge and Jay Selby, Selby's Soil Erosion Control (SSEC)

Tuesday, October 6 | 11:45 AM - 1:00 PM

- **Incident Management CalRecycle Specifications and Procedures**, presented by Todd Thalhamer, PE, CalRecycle
- **Camp Fire; Initial Response Efforts and Emergency Watershed Protective Measures**, presented by Radley Ott, PE, MS Butte County Department of Public Works

Tuesday, October 13 | 11:45 AM - 1:00 PM

- **A Brief History of Post-Fire Assessment on Non-Federal Lands in California**, presented by Pete Cafferata, California Department of Forestry and Fire Protection
- **Challenges of Post-Wildfire Erosion Control from the Perspective of a Transportation Agency**, presented by Logan Moore, Caltrans District 2

COST: Member FREE | Nonmember \$45 (Group Watch Available!)

PLATINUM SPONSORS



DAILY SPONSORS



HOSTED BY



Registration Now at <https://ehub.ieca.org/p/Western2020>



Matthew Renaud
CPESC, CESSWI, QISP, QSD/P
ToR
Senior Consultant, Water
Resources / NV5
201.240.4319

MEET YOUR NEW BOARD MEMBER - MATTHEW RENAUD

I hold a Bachelor of Science degree from the State University of New York College of Environmental Science and Forestry at Syracuse in Environmental Studies Policy and Management. My expertise is the application of NPDES Storm Water Discharge Permits in California.

I earned my Certified Professional in Erosion Sediment Control (CPESC), and Certified Erosion, Sediment and Storm Water Inspector (CESSWI) in 2009. I am a Qualified SWPPP Developer and Practitioner Trainer of Record. I am also a member of the Urban Land Institute and California Storm Water Quality Association (CASQA). I have presented and moderated sessions at the Annual CASQA conference.

I started in the consulting construction storm water compliance industry in 2009 and have worked on Linear and traditional projects. Construction clients have included private urban fill developers, public utilities, housing developers, municipalities, school districts, universities, and commercial park developers. I have also worked as an owner representative for Los Angeles World Airports as an in-house storm water compliance specialist. I earned my Qualified Industrial Storm Water Practitioner in 2017 and have worked with airports, breweries, US Coast Guard, and other industrial facilities on their storm water compliance needs in meeting their ERA Level 1 and 2 requirements.

My passion within the industry is working with owners and contractors to bring new technologies into the industry that typically is very traditional in approaching sediment and erosion control. It is my strong belief that the age of just putting silt fence up as a requirement has come to pass. With some many great reusable products on the market it is time to educate on the cost benefits of reusable products and monitor the water quality from these new methods to better protect our natural water ways and soil quality.

I look forward to working with the other Board members and to hear from the membership on what the Western Chapter can do to improve the sediment and erosion control industry.

IECA NEWS

IECA Region One and Two Reunification Update

IECA Region One and Two have created a task force to determine the resources and benefits of reunification. The recommendation from the group is to move forward with reunification, by sending the recommendation for approval out to the membership for voting. Voting will open with the IECA Region One Board of Directors election beginning September 21 and running until October 5. [Learn more!](#)

LONG-TERM MEMBER HIGHLIGHT: DAVID GILPIN



David Gilpin
General Manager/President
Pacific Coast Seed Inc.

Back in the 1970's, David Gilpin attended a few of the International Erosion Control Association (IECA) conferences, which caught his interest and began his long-term involvement with the Western Chapter of IECA. David has been, and continues to be, a long-term member of the Chapter and served on the Board of Directors for several years.

David graduated from U.C. Davis with an undergraduate degree in environmental planning and began his career working

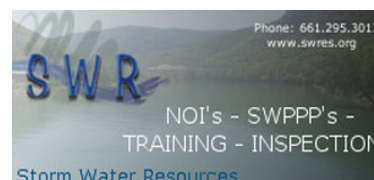
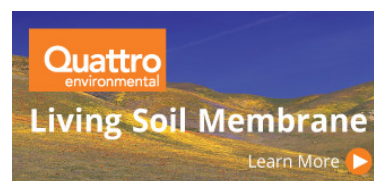
working with a landscape architect. As part of a storm drain line project, David found himself collecting local wild seeds, such as sulfur flower buckwheat and a variety of lupines, to allow for reseeding during final stabilization of the project. David then returned to U.C. Davis, graduating with a master's degree in environmental horticulture, and then continuing his career in the reseeding and erosion control industry.

Upon relocating to northern California, David founded Pacific Coast Seed, Inc. in 1985, which is known for its varied inventory of native seeds and its expertise in erosion control. Over the 35 years that Pacific Coast Seed has been in business, David has continually adapted and changed the company between primarily an erosion and sediment control focus, to a wild seed collection focus, and back again. This iterative cycle of focus has allowed David to find his career and expertise completing a full circle. Western Chapter would like to thank David for his continued support of Western Chapter IECA as one of our long-term members.

FREE CONTENT | MEMBER LIBRARY

IECA Member Benefits

Members of IECA will not only receive a discounted rate on all courses in the IECA eHub, but also access to the **free member library** of courses. Courses in this library are offered free to IECA members with paid rates available for non-members.





REGIONAL NEWS FROM IECA

POLICY & REGULATION

CRA could be used to overturn new EPA rule

The Congressional Review Act could be used to overturn the Environmental Protection Agency's changes to the water-permitting process under the Clean Water Act, depending on the outcome of the presidential election and the makeup of the 2021 Congress, according to former EPA attorney Mark Ryan. "In a departure from decades of mutual cooperation, this rule will severely limit the time and scope of states' review of federal energy project permits, rendering states virtually powerless to stop a harmful federal project from being built," said Sen. Tom Carper, D-Del. **Full Story:** [E&E News](#)

Opinion: New rule undermines clean water protections

The Trump administration is watering down provisions of Section 401 of the Clean Water Act, which allows states and tribes to prevent some federally permitted projects if they're deemed a threat to water quality, writes Jim Murphy. When paired with a rule that excludes half of US streams and wetlands from pollution regulations, the new rule and other initiatives "have put our public health and natural resources under a threat level we haven't experienced in decades," Murphy writes. **Full Story:** [The Hill](#) (6/15)

EPA to monitor mercury levels in NV. river area

The Environmental Protection Agency this fall, will propose ways to monitor mercury levels in soil near Nevada's scenic Carson River. The mercury was brought in for mining in the 1880s, and over 14 million pounds were released in the Carson River watershed over subsequent decades. **Full Story:** [Reno Gazette-Journal \(NV.\)](#) ([tiered subscription model](#)) (8/11)

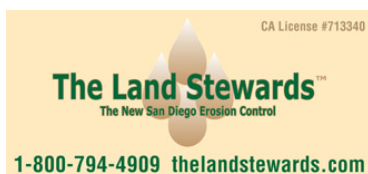
STORMWATER MANAGEMENT

CA development goes green for stormwater system

An ongoing project in a neighborhood of San Marcos, CA., is implementing an underground stormwater management system with modular suspended pavement units, as well as soils and grates that promote biofiltration. The system catches runoff and uses it to sustain 80 trees in the area. **Full Story:** [The Coast News \(Encinitas, CA.\)](#) (7/28)

Opinion: Storm drains help with flooding, water quality

"Storm drains in Mount Shasta, CA., play an important role in maintaining the city's water quality and preventing flooding. The city is accepting comments on changes to its Storm Water Master Plan, which is intended to mitigate flooding, protect the environment and help water quality", Lucchesi writes. **Full Story:** [Mount Shasta News \(CA.\)](#) (6/17)



REGIONAL NEWS FROM IECA

EROSION/SEDIMENT CONTROL

Researcher studies sediment flow due to timber harvest

A new analytical method calculates the relative weight of changes in stream flow and supplies of sediment contributing to the increased sediment flow associated with timber harvesting. The method was developed by Safeeq Khan, a University of California Cooperative Extension Specialist in Water and Watershed Sciences, who concludes that ground disturbances are the biggest factor in higher sediment flow. **Full Story:** [Southeast Farm Press](#) (8/12)

Sediment removal underway in CA. creek beds

Contractors are working to remove sediment from creek beds in Novato, CA. The \$1.55 million project, which is intended to mitigate the risk of flooding, should be finished in October. **Full Story:** [Marin Independent Journal](#) (San Rafael, CA.) (7/28)

CA bluff stabilization project gets a funding boost

The fifth phase of construction to secure railroad tracks along California's eroding Del Mar bluffs has received an additional \$11.6 million of funding. The fourth phase of work is currently underway and is slated to continue through the summer. **Full Story:** [Del Mar Times](#) (CA.) (6/3)

AZ community concerned about wildfire debris runoff

Summer monsoon rains washed blackened runoff and debris from the Mount Lemmon fire down Cañada del Oro last week near Catalina, AZ. Authorities fear that the flow may be a harbinger of worse to come as the monsoon season continues. **Full Story:** [Arizona Daily Star](#) (Tucson) (7/20)

IECA Education

Enhance Your Knowledge

IECA has two certification partners [EnviroCert International, Inc.](#) (CPESC, CESSWI, CPSWQ, CPSM, CPISM) and [CISEC, Inc.](#) (CISEC).

IECA offers the professional development credit required to apply, re-certify and keep up to date with your industry certifications.

IECA has met the standards and requirements of the [Registered Continuing Education Program](#) to deliver professional education activities for engineers, surveyors, and related A/E/C industry professionals.

A selection of online courses, webinars and in person training is included in this program.

IECA education includes:

- [eLearning Classes](#)
- [Upcoming Live Webinars](#)

[Learn more](#) about RCEP program, licensing requirements and how to keep engineering and/or surveying licensure current across state lines at <http://www.ieca.org/rcep>

REGIONAL NEWS FROM IECA CONTINUED

WETLANDS & COASTAL RESTORATION

CA. tidal marsh to be restored

Adanta, Inc. of Napa, CA., plans to restore 8 acres of tidal marsh on the Veterans Affairs property at California's Alameda Point. The work comes under a four-year, \$2.37 million contract from the US Army Corps of Engineers. **Full Story:** [Alameda Sun \(CA.\)](#) (9/1)

Obscure CA. beach to be restored

Debris will be removed and dunes restored at the little-known Encinal Beach in Alameda, CA. The work, which is scheduled to begin next week, will also include the removal of invasive plant species. **Full Story:** [San Jose Mercury News \(CA.\)](#) (tiered subscription model) (8/19)

CA. city considering wetland park proposal

A \$14 million San Francisco Bay project proposal calls for a wetland park with walkways and overlooks to be constructed where a former aircraft taxiway now rests. The proposal has won the approval of the Alameda, CA., Recreation and Parks Commission and will be reviewed by the City Council next month. **Full Story:** [East Bay Times \(Walnut Creek, CA.\)](#) (8/15)

Bridges to help manage CA. wetlands

A crane was used to place two precast concrete bridges in California's Yolo Bypass Wildlife Area in a bid to improve wetland management and provide more habitat. The bridges replace pipes that were often blocked by debris. **Full Story:** [The Daily Democrat \(Woodland, CA.\)](#) (8/6)

UPCOMING IECA WEBINAR SERIES

IECA Western Virtual Connection Promotes Wildfire Planning and Remediation in the Western US

Attend sessions on Sept. 26, Oct. 6, and Oct. 13 that focus on the timely topics of wildfire assessment, mitigation plans, and post-wildfire erosion control and watershed protection support in California. Cost is FREE for IECA members, \$45 for non-members. [Register now!](#)



VISIT [HERE](#) FOR ALL YOUR EROSION CONTROL ONLINE LEARNING NEEDS!

PROFESSIONAL LISTINGS

Dirttime.tv is an affiliated brand of **Salix Applied Earthcare LLC**, formed in 1996 by John McCullah. John has been involved in Watershed Management for 30 years, becoming a certified erosion specialist in 1986. The firm's work involves consulting, training, design/build of stream restoration, bioengineering, education, and awareness. Salix published design guidance manuals, books, popular and technical articles, and informative case studies. Dirttime.tv has produced over 40 Dirt Time videos. Selecting and watching the clips of your choice then taking tests online is a popular way to earn CEUs. Visit www.dirttime.tv regularly for 'how to' info, tips, and blogs.

Earthsavers Erosion Control Products is the home of the "Original Rice Straw Wattle". Our certified weed free wattles have been tested for sediment retention at San Diego State University and proven in field studies by Caltrans and numerous other agencies. Earthsavers wattles are available in 3 diameters, photodegradable netting, or 100% biodegradable burlap. Additionally, [Earthsavers](http://Earthsavers.com) is a master distributor for a full line of erosion & sediment control products, geosynthetics and more. Our network of distributors provide local access to premium BMPs and Earthsaver's experienced staff can provide superior technical support to our distributors and their customers and specifiers.

Kelley Erosion Control, Inc. established in 1983 is recognized throughout Nevada and California as a leader in the industry. KEC has an excellent reputation known for quality, competency, solutions, innovative ideas, cutting edge technology, excellence, and client satisfaction. Services include: Hydroseeding, site preparation, dust control applications, BMP's, revegetation and project maintenance, site winterization, wetland mitigation, stream channel stabilization, planting and irrigation, mining reclamation, soil stabilizer applications, biotechnical applications, and fire restoration/rehabilitation. Phone (775) 322-7755 Fax (775) 322-6606 Contact – Claudia Chambers CPESC, CISEC, QSP Claudia@kelleyerosioncontrol.com. Visit us at www.kelleyerosioncontrol.com.

Linwood Supply, Inc. distributes the tools you need for Erosion Control and Storm Water Management including Erosion Control Blankets, TRM and HP-TRM, HydroFiber™, Coir products, organic fertilizers, native and grass seed, plus, for oil spill remediation, Rubberizer booms, mats and filters. Other services include written pesticide recommendations and soil testing. We will always provide you with the level of service and professionalism you deserve. Linwood Supply, Inc. is a certified small business based in California. ***If Your Storm Water is as Clear as Mud™*** – Please call us at 707 678-5087 or visit us at www.linwoodsupply.com.

LSC Environmental Products exists to solve some of the industry's most persistent environmental challenges...such as erosion, revegetation, odor, dust, and waste cover through the application of our spray-applied coatings. You probably know LSC as the "ADC guys", who we have been for the past 26 years, but we are more than that. With the acquisition of Terra Novo, Inc., who are best known for their EarthGuard® products; and have served the erosion and sediment control industry for almost 20 years. We are excited to offer new solutions, including soil amendment, site winterization, intermediate cover, and special waste that we believe can benefit virtually any site.

Nedia Enterprises manufactures a complete line of erosion control, sediment control, and bioengineering products made primarily from natural fibers. Committed to the conservation of the environment, we are constantly striving to develop products that contribute to its enhancement and protection. Our products are subject to stringent quality control measures that meet or exceed industry standards. **Nedia** offers sound technical advice on product selection and installation with a thorough understanding of the benefits and limitations of the products. A large inventory of products in several distribution centers across the country facilitates cost-effective and timely delivery of our products. Contact 888-725-6999 or email info@nedia.com.

ADVERTISE YOUR BUSINESS HERE

For more information check out this link <https://www.wcieca.org/products-services/advertise-with-wcieca/>

PROFESSIONAL LISTINGS CONTINUED

Pacific Coast Seed is Northern California's premier supplier of CA native grasses and wildflowers, turf grass seed, and other erosion control materials such as fertilizers, mulches, and soil amendments. We provide seed and other materials for diverse applications including restoration, reclamation, revegetation, ornamental landscaping, and erosion control. We offer specialty seed collection from site-specific sources. For more information check out our website www.pcseed.com or contact us at 925-373-4417 or info@pcseed.com.

Quattro Environmental, Inc. offers reclamation design and implementation services in a "best value" team approach to re-establishing native plant growth on drastically disturbed soils. "**Do It Once, Do It Right**" has been the mantra for over 22 years of success on tough sites located throughout the U.S. western States. "**Hold soil**" with **BIND | ATLAS SUPERDUTY** – world's #1 heavy-duty soil binder. "**Grow soil**" for effective native plant establishment with **Quattro's Living Soil Membrane™** technology. Phone (619) 204-1372 Contact – Peter McRae, past-President WC-IECA pmcrae@quattroenvironmental.com. Visit us at www.GrowingSoil.com.

Reno Tahoe Geo Associates, Inc. – Formerly Marvin E. Davis & Associates focuses on the challenging issues of the Tahoe Basin and Northern Nevada/California terrain. Our professionals provide a diverse and solid background in geotechnical engineering; specialized engineering design; erosion control services; construction and forensic inspection services and materials testing; and, regulatory and compliance issues to enable project approval. Phone 775-853-9100 or visit us at <http://www.rtgeo.com/>.

Sustane Natural Fertilizer — For over 30 years of continuous operation, [Sustane Natural Fertilizer, Inc.](http://www.sustane.com) has produced the highest quality natural based and organic fertilizers and soil amendments distributed in the U.S. and exported to 50 countries worldwide. Sustane Natural Fertilizer maintains and operates its U.S.E.P.A. permitted compost site, manufacturing facility and corporate offices from Cannon Falls, MN. Sustane fertilizers and soil amendments provide readily available, balanced nutrition with beneficial microbiology to provide the basic soil components for exceptional plant establishment and long term sustainability. Call 800-352-9245 to speak with a Sustane Regional Specialist or with our International Team Leader.

Western Green, and its associated erosion control brands North American Green and Western Excelsior, is the industry leader for manufactured erosion and sediment control products and holds the industry's most complete product line ranging from short term ECBs to permanent HPTRM Anchored Systems. Whether your site needs short-term protection or permanent vegetation reinforcement, trust Western Green's quality brand products to handle any erosion issue you may face.

NEW! Financial Services Member Benefit!

IECA members are now eligible to join Signature Federal Credit Union and take advantage of the IECA VISA Platinum card, high-yield checking accounts, mortgage financing, business accounts and access to 5,000+ shared branching locations and ATMs! Signature Federal Credit Union is a full service, nationwide credit union, offering a wide range of services including: no fee checking, personal loans, up to 97% financing on mortgages and auto loans nationwide.

[EXPLORE NOW](#)

HEADS UP! 2021 IECA Annual Conference – Kansas City, MO

2022 Conference – Minneapolis, MN