



International Erosion Control Association

Serving Erosion Control Professionals in Arizona, California, Nevada and Hawaii

IN THIS ISSUE

President's Message	1
Be All You Can Be	2
Call for Articles	2
Making Waves IECA International Reception	3
Following 5 Fundamentals for Sustainable ...	4
Meet New Board Member Richard Dunbar	4
IECA Update	5
2018 IECA Annual Conference Environmental Connection	5
Field Tour Event Summary	6
Products & Services	7 & 9
Contractor Highlight	8
Get Listed	8
Great Job!	8
Up-coming Dates	9
Training & Webinars	9
Submit Nominations for Awards	11
Professional Listings	11 & 12

PRESIDENT'S MESSAGE

The Western Chapter has had an active summer and we're moving directly into an equally active fall and winter. Here's a summary of what's been going on and events still to come.

The ***Erosion Control and Restoration Field Tour*** took place in July and was an amazing event. The day started off at ***Kelley Erosion Control, Inc.*** in Reno where attendees checked in, had a great breakfast, and then boarded the bus. The field tour stopped at sites in Reno, Carson City, and Lake Tahoe where the attendees observed excellence in stream restoration, erosion control, and sediment control. The weather was perfect for the field tour, we saw wild horses adjacent to a stream restoration site, and the tour had the opportunity to a drive along a yet-to-be opened highway project

between Reno and Carson City to observe erosion and sediment control efforts. The afternoon was spent on the banks of Lake Tahoe where we observed first-hand that construction can take place next to sensitive receiving waters when thoughtful and appropriate protective measures are put in place and embraced by the contractor. The day ended with an amazing dinner of beef, chicken, rabbit, pasta, wine, and Picon Punch at Louis' Basque Corner where the networking was outstanding.

The Western Chapter extends its appreciation to the docents that helped lead the field tour, including: ***Tina Mudd, PMP***, Environmental Manager, Granite Construction; ***Karen Mullen, President***, Karen Mullen-Ehly, Inc.; ***Colette R. Easter, PE***, Nevada Department of Transportation, Hydraulics Division; ***Kim Smith***, Nevada Department of Transportation, Stormwater Division; ***Barb Santner***, Senior Landscape Architect, Stantec; ***John L'Etoile***, Landscape Architect Supervisor, Nevada Department of Transportation; ***Mark Cooper, PE***, Nevada Department of Transportation; and ***Stephen Peck, PE***, Principal, Cardno. The docents shared their first-hand experience working on the excellent erosion control, sediment control, and restoration projects visited during the tour.

Field tours require significant event planning and logistics efforts to be successful. The Western Chapter extends its appreciation and gratitude to the planners and hosts for this event, including: ***Claudia J. Chambers, CPESC, CISEC, QSP***, Kelley Erosion Control, Inc.; ***Kym Kelley, CPESC, CISEC, QSP***, Kelley Erosion Control, Inc.; and ***Julie Etra, MS, CPESC***, Western Botanical Services Inc.



Jeff Endicott
PE, BCEE, CPESC, QSP/D
WCIECA President
jendicott@cascinc.com
CASC Engineering and Consulting
909.783.0101 Ext. 5380

(Continued on Page 2)

**Be All You Can Be –
many hands do
make light work!**

An organization is only as strong and active as its members–will you become an active member?

Please see the [Committees](#) list on the Western Chapter's [website](#) to see how your talents and interests may benefit your peers and email the chairperson of that committee today!



CALL FOR ARTICLES

Do you have a technical article, regulatory update, or event announcement you'd like to share with your fellow members? Please forward articles to Cyndi at westernchapter@gmail.com and we'll publish them in the next issue of Western Chapter News! Thank you!

PRESIDENT'S MESSAGE, CONTINUED

Next up is the **Fall 2017 Soil Erosion and Sediment Control Class**. This class is being produced by **Mike Harding**, and Mike has invited the Western Chapter to be a co-sponsor. Mike planned and taught this class in 2016 in San Diego County, and what got the attention of the Western Chapter was Mike's description of the class last year: *"This was one of the best ever workshops that I've done."* If you've ever attended one of Mike's classes, then you know they are great, so the Western Chapter could not refuse Mike's offer to be a part of this year's efforts. Workshop details are still in development, so watch for future updates and details. Attending one of Mike's workshops means you'll learn from one of the world's top experts in the erosion and sediment control industry. If you can't attend, consider sending your staff for a great learning opportunity.

IECA's Annual Conference is coming to Long Beach in February, and the Western Chapter will be greeting everyone at a reception the evening before the full conference program begins. The **Making Waves – International Reception** will be at the **Aquarium of the Pacific** where attendees will experience networking, live music by **Sons of Hydroseeders and Daughters of the Purple Sage**, prize drawings, strolling libations, and culinary surprises amidst the world-renowned aquaria. There is no better way to experience Long Beach's most popular attraction without the crowds.

The **Making Waves – International Reception** is a private event open to all IECA members, their guests, and like-minded individuals with advanced registration (registration is separate from the conference registration). Tickets are now on sale, with the first batch of tickets being offered at a significant discount through the generosity of event sponsors. Tickets are available [here](#).

Making Waves – International Reception is Sunday, February 11, 2018 from 7 pm to 11 pm. **Sponsorship** opportunities are available [here](#).

Looking further out, the Western Chapter has begun initial discussions on a two-day workshop somewhere in **Hawaii** for 2018. Initial details to be developed include a classroom site, field tour sites, and the month to hold the event. The Western Chapter Board would be interested in hearing your ideas for this workshop as well as your interest in attending.

Western Chapter elections were completed this summer and we welcome **Richard Dunbar** as our new Director. Richard is with **Oakridge Landscape, Inc.** in Valencia, California.

The Western Chapter extends its thanks to **Jane Ledford, CPSWQ, QSD, QSP, TOR** for her many years of service as a Western Chapter Director. Jane is owner of **JL StormWater Consultants, Inc.** in El Cajon, California.

Thank you for being a Western Chapter member. Please contact any Board member or me if you have ideas for the Chapter or want to volunteer.

Best regards,

Jeff Endicott, PE, BCEE, CPESC

President, Western Chapter International Erosion Control Association

Email: jendicott@cascinc.com

Phone: 909.783.0101 Ext. 5380

760.259.0108 Ext. 5380

909.835.7537 (Cell)



**Making Waves
IECA
International Reception**





Aquarium of the Pacific
 100 Aquarium Way Long Beach, CA
Sunday February 11, 2018 @ 7:00 pm – 11:00 pm
 Networking, Prize Drawings, Strolling Libations and Culinary Surprises
 amidst the World-Renowned Aquaria!

TICKETS: EARLY BIRD: \$75 (Private function viewing – no crowds, just great food, cocktails, and entertainment to be enjoyed – with your peers!)

Purchase tickets at <https://makingwaveswcieca.eventbrite.com>

Sponsorship: <http://www.wcieca.org/product-category/long-beach/>













Themed entertainment featuring – Sons of the Hydroseeders and Daughters of the Purple Sage.

























FOLLOWING THE 5 FUNDAMENTALS FOR SUSTAINABLE VEGETATION WILL INCREASE YOUR PROJECT SUCCESS

Are you testing your soils and analyzing the results to give your projects the best opportunity for success?

Not understanding your soils and what you must do to treat them prior to planting, can cause issues with vegetation, Notice of Termination delays, and project failures from erosion. Ultimately, understanding your soils prior to establishing vegetation will give your project the best opportunity for sustainable vegetation.

Implementing the “5 Fundamentals for Sustainable Vegetation” as an erosion control professional will build the foundation for project success.

1. Soil Testing

Soil testing provides essential information to determine adjustments, if any, that need to be made to assure a more favorable environment for faster, more complete vegetative growth and sustainable establishment. Failure to test for and address potential soil nutrient and organic matter deficiencies, excessively acidic or alkaline soils, and the presence of excessive salts or metals, can spell disaster for any project. To mitigate this potential disaster, amendments can be applied like Biotic Soil Media™, soil neutralizers and biostimulants.

2. Pick the Right Seed Mix

It is necessary to understand the plant species needed for sustainable growth and long-term erosion and sediment control. Questions to consider include: Where is the project? What are the soil characteristics? Is it permanent or temporary vegetation? What part of the season will the install occur? What is the intended application? For example, is it a slope, channel, levee, or maybe a cover crop, etc.? Climate conditions, elevation, and topography will also be important criteria to understand prior to seed selection. Resources include universities, specialized consultants, and contractors, seed suppliers in natives, turf grasses, and ornamental plants. Or contact sources like the Natural Resource Conservation Service (NRCS), Bureau of Land Management (BLM), US Forest Service (USFS), State Department of Transportation (DOT), and the Local Soil Conservation Chapters.

(Continued on Page 10)

MEET YOUR NEW BOARD MEMBER



Richard Dunbar
GM Oakridge Landscape Inc.
Richard@Oakridgelandscapenet

Richard started the Erosion Control Division of Oakridge Landscape over ten years ago. In doing so, he is focused on improving awareness within the industry regarding the importance of managing stormwater. Richard is currently completing his CISEC certification and will soon become a Qualified SWPPP Practitioner (QSP) in the State of California. In addition to his new duties as a Board member of the Western Chapter of IECA, he also sits on the Board for the Building Industry Association-LAV Chapter.

Prior to starting the Erosion Control Division, Richard's experience included two years at Valley Crest, and four years at Landscape Development, Inc. With over 35 years of experience in the Construction Industry, Richard brings vast knowledge and experience to the Western Chapter as a Board member.

Additional accomplishments include creating strong relations with the Los Angeles County Fire Department, as well as working closely with the County Agricultural Commissioner/Weights and Measures. Richard is responsible for the hiring, training and supervision of his entire workforce working in multiple field offices throughout Southern California.

In his down time, Richard spends time with his four children and five grandchildren. He is also a Volunteer Ski Patroller through the National Ski Patrol Association for Big Bear Mountain Resorts. As part of the Ski Patrol Richard works on the weekends to help injured guests and to make sure those that come to the Big Bear Ski Resorts have the opportunity to ski safe. Richard also enjoys mountain biking and boating in Big Bear, where he lives.

IECA UPDATE

Online Training Modules Available for CISEC Exam - A Certified Inspector of Sediment and Erosion Control (CISEC) or Canadian Certified Inspector of Sediment and Erosion Control (CAN-CISEC) demonstrates a proficiency in observing, inspecting, and reporting the implementation of SWPPPS. Access the IECA online learning library for training to help you prepare for the certification exam with four modules, of which individual modules and a full module bundle are available for purchase. [Learn More](#)...

Meet the New IECA Board of Directors - Congratulations to Newly Elected IECA Region One Board of Directors (terms commence in February 2018). [See them here.](#)

IECA Resource Library Launched as Your Newest Member Benefit! [Access](#) this new member benefit for the most current, relevant solutions for the erosion and sediment control and stormwater industry. Enter a search term, author, topic, etc. to search our case studies, photos, video and white papers to get your answer quickly. Select your profile, and click on the "claim credit" tab.

[IECA Region One Award Nominations Now Open!](#) - Take a moment to recognize the outstanding achievements in the erosion and sediment control industry. Nominations are now open for the Environmental Excellence, Sustained Contributor, and Outstanding Professional awards. Learn more about the qualifications and submit before October 31, 2017. [Learn More](#)

Closing Keynote Speaker Addresses Current Legislative/Regulatory Environment - Andrew Wright, lobbyist and popular political commentator, will provide a lively "inside the Beltway" perspective on the environmental agenda for the Trump Administration and Congress.



IECA 2018 ANNUAL CONFERENCE & EXPO

**Plan to Attend
Long Beach, California
February 11 - 14, 2018**

Join the industry's largest erosion and sediment control event. Join thought leaders from around the world to network and learn from each other and explore the Expo Hall to see the latest products, services, and technology to help you perform your job better!

[Schedule, Registration and More!](#)

Housing is Now Open - Book within the Block and Save!

Click on [Book Your Hotel](#) to connect with our housing bureau to help you book your reservation at the hotel of your choice. Group rates have been negotiated for conference attendees at the following hotels located within walking distance to the convention center. Booking within the block allows you to stay at hotels with competitive room rates to keep your costs at a minimum.

Cut-off Date: January 22, 2018

FIELD TOUR – EVENT SUMMARY!

The highly successful Reno/Carson City/Tahoe field tour focused on erosion control, water quality, and restoration projects in northern Nevada and Lake Tahoe, both Nevada and California. The day began at Kelley Erosion Control's offices in Reno with a continental breakfast and orientation. Each participant was given a handout that included a map of the route locating seven formal stops and 17 points of interest, as well as summary information for each stop. About 45 of us loaded into a very comfortable bus, equipped with a microphone, comfortable seats, and the required bathroom.

At each designated stop an expert on aspects of their project, from design through construction and post construction monitoring, discussed the salient parts of the projects. We started with the Steamboat Creek restoration project, completed in 2006, but which just fulfilled permit requirements for vegetation success two years ago. Approximately 6,700 feet in length, with a 200-ft. wide floodplain, low flow channel, and 3:1 slopes, the site was seeded and blanketed with excelsior. No container plantings took place.

Next, traveling through Pleasant Valley on old highway 395 we were able to observe I-580, a new length of freeway completed by Nevada Department of Transportation (NDOT) in 2012 located above the valley on the east flank of the Sierra Nevada. We stopped at the marvelous Galena Bridge, discussing engineering issues regarding its design and construction, and then at an older section of the freeway to observe erosion control methodologies, old test plots, weed treatments, contour grading, and aesthetic components including rock staining.

From there we traveled through Washoe Valley, observing the 2016 Little Valley Fire in route, and the older section portion of the Carson City Freeway. This very successful section, from a revegetation and erosion control perspective, was completed in 2004. Methods included track walking, BFMs on selected slopes, mycorrhizal inoculation, and salvaged topsoil where available. We also passed a questionable use of cellular confinement systems in wetlands. A super perc of the day followed, with an NDOT escort through the new section of the Carson City Freeway, still unopened to the public. NDOT engineer Mark Cooper explained innovative construction techniques including export of excavated fill under the roadway, to a conveyor system, and final re-filling of an old borrow site, called the Oasis Pit. At the Pit our expert attendees discussed potential solutions to mild to severe erosion that had occurred on the fill site as a result of intense winter weather and summer storms. These included the reduction of slope length, in-slope drainage improvements to direct surface flows to a rock-lined channel(s), soil roughness, higher rates of application of the specified BFM, and more appropriate seed mix. We also discussed the overreliance on fiber rolls for this site, better fiber roll installation methods, and the general sparseness of adjacent, undisturbed native vegetation. Prior to loading the bus, we grabbed sandwiches, chips, fruit and beverages, and then headed over Spooner Summit to Lake Tahoe.

NDOT's SR28 Water Quality and Multi-Use Path Project was the next stop. This complicated bike path is a CMAR project (Construction Manager at Risk) with Granite Construction the General Engineering Contractor and KEC the revegetation subcontractor. The path is three miles long and under enormous scrutiny, given its location next to Lake Tahoe.

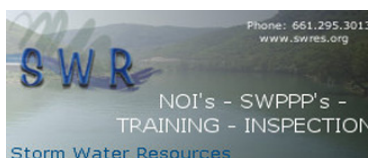
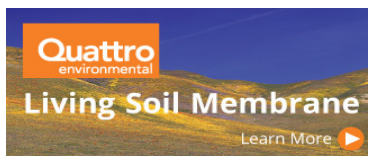
(Continued on Page 7)



Julie Etra MS, CPESC
Western Botanical Services
etra.julie@gmail.com



'Like' our Facebook page,
 comment and / or start a
 conversation at
www.facebook.com/WCIECA



FIELD TOUR – EVENT SUMMARY, CONTINUED

Construction access is limited, which in part determined components of design. Techniques to protect water quality and control erosion were explained, as well as rationale for location, engineering components, and a bit of the political setting.

The last stop consisted of the Kings Beach Watershed/Commercial Core Improvement Project, initiated in 2002. The project was designed to improve stormwater runoff conditions in a densely-built area, address safety and the need for enhanced multimodal mobility, and help rejuvenate the Kings Beach community. The County commenced the overall project efforts with a stormwater “masterplan” (Watershed Improvement Plan [WIP]) that consequently evolved into phases/projects being implemented in the Kings Beach Community. The Kings Beach area is one of the largest developed areas on the north shore of Lake Tahoe, with a high percentage of impermeable land coverage in the form of roads, driveways, rooftops, and compacted soils as well as disturbance in the natural drainage pathways and natural stream environmental zones (SEZ's). Separation of clean water from the residential and commercial areas with a direct outfall to Lake Tahoe and the residential runoff from the highway runoff were part of the overall project improvement plan. Engineer Steve Peck described the technical improvements, and the treatment train of water quality improvement, including basins and vegetated outfalls at the Lake.

Finally, we ended the fun and informative day with spirited conversation and a tasty meal at Louis' Basque Corner, where we had an opportunity to interact as professionals, and as the Western Chapter community.



CONTRACTOR HIGHLIGHT

Since 1983, Kelley Erosion Control, Inc. has been a leader in Erosion Control projects throughout Nevada and California.

Owners Kym Kelley and Claudia Chambers are both Certified Professionals in Erosion and Sediment Control (CPESC) through EnviroCert International, Inc., Certified Inspectors of Sediment and Erosion Control (CISEC) through CISEC, Inc., Qualified SWPPP Practitioners (QSP) through California Stormwater Quality Association and IECA members since 1988.

Both Kym and Claudia were founding members of the Western Chapter, where they have co-lead and participated in numerous workshops, panel discussions, and field trips over the last 20 plus years in all four of our member states (California, Arizona, Nevada, and Hawaii). Claudia served on the Western Chapter Board of Directors for many years as treasurer, a fitting position for a successful business owner. Most recently they hosted, organized, and subsidized the highly successful Western Chapter summer field trip in northern Nevada and Lake Tahoe.

Claudia served on the International Erosion Control Association Board of Directors from 2006 – 2007 as the Technical Vice President. She has also served on the Finance Committee, Soil Fund Committee (and helped in its creation), Editorial Review Board, Technology Section Committee, Standards and Practices Committee, and was very active with the Professional Development Committee.

Kym and Claudia co-presented their work at the 2000 IECA conference. Both women have attended almost every IECA conference since 1988. Through their commitment to quality workmanship, continuing education, and consistently great customer service, they remain in the forefront of the Erosion Control industry in the area.

You can contact Kelley Erosion Control at 775-322-7755 or you can visit them on their web site, <http://www.kelleyerosioncontrol.com/>.



If you have a contractor, book, project etc. you would like to highlight please send submissions to: westernchapter@gmail.com.



Claudia Chambers
Kym Kelley
CPESC, CISEC, QSP
Kelley Erosion Control
claudia@kelleyerosioncontrol.com
775-322-77557

GET LISTED!

Within the stormwater field we are always chanting – “reduce your exposure.”

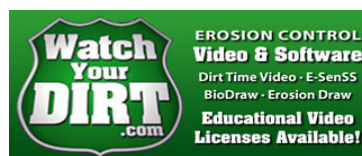
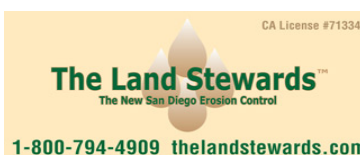
*Well, here is a chance to **get targeted exposure** – contact Cyndi Brinkhurst at (530) 272-2407 or at westernchapter@gmail.com to reserve your ad space today!*

GREAT JOB!

Is your project going great? Did someone do a good job? Do you have a technical article, regulatory update, contractor to highlight or event announcement you'd like to share with your fellow members?

Please forward articles to the westernchapter@gmail.com and we'll publish them in the next issue of Western Chapter News!

Thank you!



UPCOMING DATES & MEETINGS

TENTATIVELY December 11 & 12 (Oceanside, CA) **Soil Erosion and Sediment Control Class**. Save the date – more details will be made available to you soon!

TENTATIVELY December 14 & 15 (Orange County Great Park, CA) **Soil Erosion and Sediment Control Class**. Save the date – more details will be made available to you soon!

February 11 - 14 (Long Beach, CA) **2018 IECA Annual Conference and Expo.**

February 11 (Long Beach, CA) **Making Waves IECA International Reception** at the Aquarium of the Pacific.

February 12 (Long Beach, CA) **Western Chapter General Membership Meeting.**

WEBINARS & SHORT COURSES

IECA's Webinar series offers webinars and/or short courses each month taught by subject matter experts for industry professionals. Webinars are usually one hour in length and worth 1 Professional Development Hour. Short Courses are usually three hours in length and worth 3 Professional Development Hours. Customized web training is also available.

October 18, 2017

Sediment Basin Design: How Five Different Sediment Detention Devices Varied in Efficiencies

November 15, 2017

Applications of the High Definition Stream Survey, more data, better quality, lower cost

December 13, 2017

Soil Health and Erosion Control

Training

IECA's New eLearning Experience

Online industry education at your fingertips

IECA's new and enhanced eLearning platform offers over 100 courses taught by industry experts for industry professionals. All IECA eLearning is self-paced and available to you anytime, anywhere. [Browse Courses](#)

EnviroCert International provides oversight and direction for the CPESC, CESSWI, CPSWQ, CMS4S certification programs. Phone: (828) 655-1600 david@envirocertintl.org www.envirocertintl.org.

California Construction General Permit QSD and QSP Training Courses

provided by CASQA-qualified CGP Trainers of Record (CGP-ToR). Professionals developing SWPPPs (QSDs) or professionals implementing SWPPPs (QSPs) under the CA construction general permit must complete this training. For training classes, go [here](#).

Training-Offered by CISEC - For one and one-half day construction site inspector training modules on sediment and erosion control. Visit www.cisecinc.org for various dates and locations coming up in California.

FOLLOWING THE 5 FUNDAMENTALS FOR SUSTAINABLE VEGETATION WILL INCREASE YOUR PROJECT SUCCESS, CONTINUED

3. Erosion Control and Sediment Control Materials

Choose the correct cover material to protect both seed and soil. Adding soil amendments to poor soils is crucial in order to achieve the desired outcome of the project prior to installing the proper erosion control and sediment control materials. The erosion control effectiveness, ability to facilitate growth and the functional longevity required for that protection must be evaluated. Begin by analyzing site conditions such as slope lengths and gradients, ditch and channel flow hydraulics and the types of products to be installed. The methods, parameters and challenges associated with each type of material need to be properly evaluated.

4. Installation

Proper installation practices are necessary to the success of any erosion and sediment control measure. These include ensuring that detailed specifications, plans, guidelines and CAD details for all of the erosion and sediment control techniques are followed. Product categories typically include Biotic Soil Technologies (BST), Hydraulic Applied Erosion Control Products (HECP's), Rolled Erosion Control Products (RECP's), Turf Reinforcement Mats (TRM's) and other sediment control and devices. If the installer is not familiar with the installation of a particular material or method, it is wise to consult a manufacturer representative to discuss and set up a training session.

5. Inspection and Maintenance

After the erosion control and sediment control solutions have been installed, it's important to visually inspect and maintain them on a regular basis. Inspection by a qualified and certified professional is highly recommended. Be sure that the installations are in accordance with the plans/specs. The project material quantities and activities should be fully documented. Subsequent inspections conducted after each significant precipitation or other potentially damaging weather event is required.

In Conclusion:

Profile Products offers a free web based Soil Solutions Software (PS3) that addresses these 5 design considerations. Profile PS3 www.profileps3.com is a comprehensive resource for designing and selecting the right products to address both the physical and chemical properties of soil and site characteristics. It will help you develop holistic, sustainable solutions for cost-effective erosion control, vegetation establishment and subsequent reductions in sediment and other pollutants from leaving disturbed sites and entering water bodies.

References:

Theisen, M.S. and Welch, M. M. 2016. Five Fundamentals for Successful Restoration of Disturbed Lands. Proceedings of StormCon 2016 Annual Conference. USA



Daniel Reynaga, CPESC, QSD
DReynaga@profileproducts.com

Western Regional Sales Manager - Profile Products LLC

HAVE YOU SUBMITTED YOUR 2018 IECA REGION ONE AWARD NOMINATION YET?

Nominations Close October 31, 2017!

Nominate a colleague or yourself for one of the following IECA Region One awards:

- √ Outstanding Professional Award recognizes an IECA member or organization that demonstrates excellence in their work and is viewed by peers as an industry leader through significant engagement with IECA.
- √ Environmental Excellence Award recognizes an outstanding stormwater and erosion or sediment control project, program or operation that demonstrates excellence in natural resource conservation and environmental protection.
- √ Sustained Contributor Award recognizes a member who provides distinguished service to IECA and has made outstanding, long-term contributions to improve the erosion and sediment control industry. Contributions can be made via education, government involvement, research, establishment of standards/policies, or the development of technology.

[Learn How to Submit!](#)



PROFESSIONAL LISTINGS

EARTHSAVERS EROSION CONTROL PRODUCTS is the home of the “Original Rice Straw Wattle”. Our certified weed free wattles have been tested for sediment retention at San Diego State University and proven in field studies by Caltrans and numerous other agencies. [Earthsavers](#) wattles are available in 3 diameters, photodegradable netting, or 100% biodegradable burlap. Additionally, Earthsavers is a master distributor for a full line of erosion & sediment control products, geosynthetics and more. Our network of distributors provides local access to premium BMP’s and Earthsaver’s experienced staff can provide superior technical support to our distributors and their customers and specifiers.

KELLEY EROSION CONTROL, INC. established in 1983, recognized throughout Nevada and California as a leader in the industry. KEC has an excellent reputation known for quality, competency, solutions, innovative ideas, cutting edge technology, excellence, and client satisfaction. Services include: hydroseeding, site preparation, dust control applications, BMPs, storm water pollution inspection and monitoring, revegetation and project maintenance, site winterization, wetland mitigation, stream channel stabilization, planting and irrigation, mining reclamation, soil stabilizer applications, biotechnical applications, fire restoration/rehabilitation, water quality, turbidity control & pH sampling for SWPPP requirements. Contact - Claudia Chambers CPESC, CISEC, QSP, claudia@kelleyerosioncontrol.com, phone (775) 322-7755. Visit us at www.kelleyerosioncontrol.com.

PROFESSIONAL LISTINGS, CONTINUED

LINWOOD SUPPLY, INC. is your distributor for Erosion Control and Storm Water Management BMPs offering Erosion Control Blankets, TRM, and HP-TRM from North American Green plus HydroFiber™, organic fertilizers, seed. For oil spill remediation, we distribute Rubberizer booms, mats, and filters from ClearTec. We will always provide you with the kind of service and professionalism you deserve. Linwood Supply, Inc. is a certified small business based in California. **If Your Storm Water is as Clear as Mud™** - Please call us at (707) 678-5087 or visit us at www.linwoodsupply.com.

LSC ENVIRONMENTAL PRODUCTS exists to solve some of the industries' most persistent environmental challenges...such as erosion, revegetation, odor, dust, and waste cover through the application of our spray-applied coatings. You probably know [LSC](#) as the "ADC guys", who we have been for the past 26 years, but we are more than that. With the acquisition of Terra Novo, Inc., who are best known for their EarthGuard® products; and have served the erosion and sediment control industry for almost 20 years. We are excited to offer new solutions, including soil amendment, site winterization, intermediate cover, and special waste that we believe can benefit virtually any site.

MARVIN E. DAVIS & ASSOCIATES, Inc. focuses on the challenging issues of the Tahoe Basin and Northern Nevada / California terrain. Our professionals provide a diverse and solid background in geotechnical engineering; specialized engineering design; erosion control services; construction and forensic inspection services and materials testing; and, regulatory and compliance issues to enable project approval. Phone (775) 853-9100 or visit us at www.mdageotechnical.com.

NEDIA ENTERPRISES manufactures a complete line of erosion control, sediment control, and bioengineering products made primarily from natural fibers. Committed to the conservation of the environment, we are constantly striving to develop products that contribute to its enhancement and protection. Our products are subject to stringent quality control measures that meet or exceed industry standards. [Nedia](#) offers sound technical advice on product selection and installation with a thorough understanding of the benefits and limitations of the products. A large inventory of products in several distribution centers across the country facilitates cost-effective and timely delivery of our products. Contact 888-725-6999 or email info@nedia.com.

PACIFIC COAST SEED is Northern California's premier supplier of CA native grasses and wild- flowers, turf grass seed, and other erosion control materials such as fertilizers, mulches, and soil amendments. We provide seed and other materials for diverse applications including restoration, reclamation, revegetation, ornamental landscaping, and erosion control. We offer specialty seed collection from site-specific sources. For more information checkout our website www.pcseed.com or contact us at (925) 373-4417 or info@pcseed.com.

SUSTANE NATURAL FERTILIZERS - For over 30 years of continuous operation, Sustane Natural Fertilizer, Inc. has produced the highest quality Natural Based and Organic Fertilizers and Soil Amendments distributed in the U.S. and exported to 50 countries worldwide. [Sustane](#) Natural Fertilizer maintains and operates its U.S.E.P.A. permitted compost site, manufacturing facility and corporate offices from Cannon Falls, MN. Sustane Fertilizers and Soil Amendments provide readily available, balanced nutrition with beneficial microbiology to provide the basic soil components for exceptional plant establishment and long term sustainability. Call (800) 352-9245 to speak with a Sustane Regional Specialist or with our International Team Leader.

FIRST RECTANGULAR WATTLE. It is made of Coir, BioD-Wattle-RTTM. It is designed to perform effectively as a slope length shortening device and other sediment control applications. It is manufactured to make installation quick and easy. Its rectangular shape (9"x4", 12"x6" and 18"x 8") provides better performance and savings in shipping compared to circular shape wattles. The BioD-Wattle™ is ideal for sediment control in environmentally sensitive areas where synthetic materials are not allowed. Its installation technique is unique and simple. It is another innovative product from [RoLanka](#) and it will be marketed only through exclusive distributors. Distributor inquiries are welcome at lanka@rolanka.com and 1-800 -760-3215.