



## WESTERN CHAPTER

Volume 23, Issue 1

WINTER 2016

# International Erosion Control Association

*Serving Erosion Control Professionals in Arizona, California, Nevada and Hawaii*

## IN THIS ISSUE

President's Message	1
Annual Meeting & Mixer	2
Thanks Committee Members	2
Be All You Can Be	2
Call for Articles	2
Vetiver Grass	3
Professional of the Year	4
Iberoamerica Conference	4
Contractor Spotlight	5
Advertise With Us	6
Invest in Yourself	6
Training	7
Webinars	7
Up-coming Dates	7
Professional Listings	8
Get Listed	8
Product Reviews Wanted	8
WC/IECA Mixer	9

## PRESIDENT'S MESSAGE

The **Western Chapter Meeting at EC-16** will include a short (I promise) presentation on what's going on in the Chapter, and then plenty of time to network, socialize, and trade business cards. The Chapter meeting will include food and beverages thanks to several generous sponsors.

Western Chapter is gearing up to co-sponsor the **Erosion Control Summit III** at Shasta College. The two-day session will include classroom training and field time to observe the correct way to install or apply erosion and sediment control products and materials. The Summit is scheduled for May 3-4, 2016 in Redding, California. Western Chapter intends to have vendor and attendee information out soon. For now, mark your personal calendar, and/or get the Summit on the calendars for a few of your best staff as recognition for a job done well. I'm planning to send a couple of my staff again this year: my staff attending the Summit last year reported the event was amazing. All attendees will earn Professional Development Hours (PDHs) to use for license/certificate renewals.

Speaking of events, the Western Chapter needs to hold an event in the summer and/or fall. We're open to member ideas, and hope to select a topic and location that will appeal to many members or that will attract members from under-served areas of the Western Chapter area.

Watch for the **Western Chapter Scholarship Program** this year. The Scholarship is intended to assist a student in their pursuit of an education in an area related to erosion and sediment control. Students from junior colleges, colleges, and universities in the Western Chapter area are eligible to apply.

**John McCullah**, a Western Chapter member, has been named IECA's Outstanding Professional of the Year. Read more about John and his accomplishments elsewhere in this newsletter.

After an extensive search IECA has selected **Sharan Wilson** to be the leader for the organization. Sharan has more than twenty years of senior level leadership experience in the telecommunications industry, followed by nearly ten years as an Executive Director in the non-profit sector. Her undergraduate degree is in Advertising/Public Relations and her Masters' is in Organizational Development from the University of Nebraska at Omaha. Sharan and I have spoken by telephone and networked via email several times already, and we plan to meet at EC-16. Sharan is also planning to stop by the Western Chapter meeting, so that would be a good opportunity to meet her. I'm impressed by Sharan's open communication style and her support of chapters.

*(Continued on Page 5)*



**Jeff Endicott**  
PE, BCEE, CPESC,  
QSP/D  
WCIECA President  
[jendicott@cascinc.com](mailto:jendicott@cascinc.com)  
CASC Engineering and  
Consulting  
(909) 835-7537



### VISIT OUR WEBSITE!

Get the latest Chapter news online - Check it out today at:  
[www.wcieca.org](http://www.wcieca.org)

**Be All You Can Be –  
many hands do make  
light work!**

*An organization is only  
as strong and active as  
its members-will you  
become an active  
member?*

Please see the  
[Committees](#) list on the  
Western Chapter's  
[website](#) to see how  
your talents and  
interests may benefit  
your peers and email  
the chairperson of  
that committee today!



### CALL FOR ARTICLES

*Do you have a  
technical article,  
regulatory update, or  
event announcement  
you'd like to share with  
your fellow members?  
Please forward articles  
to Cyndi at  
[westernchapter@gmail.com](mailto:westernchapter@gmail.com)  
and we'll publish  
them in the next issue  
of Western Chapter  
News! Thank you!*

**NEXT DEADLINE  
MAR. 31, 2016.**

## WESTERN CHAPTER ANNUAL MEETING & MIXER

All attendees from California, Arizona, Nevada, and Hawaii are invited and encouraged to participate in the Chapter's General Meeting & Mixer to be held at EC16 on Wednesday evening – Feb. 17. The Western Chapter Board will provide a brief update on what's been happening in the Chapter, and there will be plenty of time to network with fellow Western Chapter members.

"A Texas Home Compañero" was cancelled 😞. This gives the Western Chapter more time to socialize during our mixer, after a brief meeting. See the flyer on the last page of this newsletter for details and a list of sponsors who helped to make this event enjoyable!



## WESTERN CHAPTER MEMBERS ON IECA COMMITTEES IN 2015 – WE THANK YOU!

Alicia Kinoshita	University Partners
Chris Marr	Standards and Practices Committee
Craig Benson	Save Our International Land (SOIL) Fund
Danielle Kurek	Educational Track: Stormwater Management
Dennis Richards	Educational Track & Subcommittee: Surface Water Restoration
Douglas Dowden	Chapter Presidents Council
Gerry Hester	Past Presidents Council
Greg Naffz	Awards Committee
Jeanne Duarte	Awards Committee
John McCullah	University Partners
Julie Etra	Save Our International Land (SOIL) Fund
	Conference Planning Committee
	Educational Track: Surface Water Restoration
Michael Chase	Professional Development Committee
	Past Presidents Council
	Educational Track: Stormwater Management
	International Regional Council
Michael Harding	Past Presidents Council
	Save Our International Land (SOIL) Fund
Pablo Garcia-Chevesich	University Partners
Robert Crowell	Past Presidents Council
Sandra Mathews	Standards and Practices Committee
Teresa Jakeway	Educational Tracks Subcommittee
	Professional Development Committee

## THE USE OF VETIVER GRASS FOR HEDGEROWS AND EROSION CONTROL IN THE STATE OF OAXACA, MÉXICO

Vetiver (*Chrysopogon zizanioides*) is a grass species native to India with many useful attributes, particularly for erosion control. It is a perennial plant that does not produce viable seed, stolons, or rhizomes; but has a very fibrous and deep root system. It is not invasive. Vetiver has been used globally for decades in tropical and semi-tropical climates over a wide range of site conditions and soils; however it will not tolerate prolonged freezing at depth. This plant has been used extensively all over the world for erosion and sediment control, mostly in tropical or subtropical climates, such as Brazil, China, the Congo, Australia, Indonesia, Venezuela, Vietnam, Thailand, India, the Philippines, Senegal, Zimbabwe, Nigeria, Colombia, El Salvador, Nicaragua, Guatemala, Costa Rica, and the southern United States. Vetiver made its debut in Oaxaca Mexico over 20 years ago. Propagation is rapid and easy and one tiller can multiply to 25 plus tillers in two to three months, depending on climate and growing conditions. The Vetiver Network International (<http://vetiver.org/>) is the most thorough and current resource for this plant.

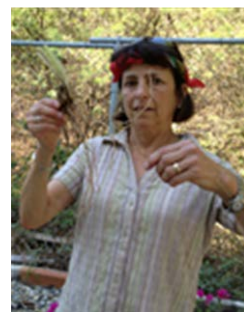
Vetiver was introduced in the State of Oaxaca about 20 years ago to three regions of the state, through the non-profit LASOS. After its introduction, there is little record of its use elsewhere in the state, although plants can be found in unexpected places; presumably established by the government between 10 and 20 years ago. Its fall from popularity or lack of use as an excellent erosion control material remains unexplained.

The State of Oaxaca located on the southern (Pacific) coast of Mexico is the 5th largest state in Mexico with an area of 95,364 square kilometers. It ranks first, however, for cultural and biological diversity, and is home to 14 distinct indigenous peoples (30% of Mexico) and at least 16 distinct languages. Oaxaca is divided into 570 municipalities. Its capital is Oaxaca de Juárez, acknowledging the birthplace of Benito Juárez, Mexico's first indigenous (Zapotec) President. It contains 80% of the vegetation types in Mexico, from semi-desert to tropical rain forest with much original forest intact, and is home to more plant species than Europe.

Being primarily mountainous, erosion problems are mainly associated with land use conversions from native forest to agriculture and grazing, timber harvesting, and road development. The change in land use, including road development, has mainly been done on the municipal and local level. The Federal Government, based in Mexico City, is responsible for developing and maintaining the federal road system. It is not uncommon to see slope failures associated with corn, now an annual crop (resultant from thousands of years of plant breeding from the original perennial grass called teosinte) planted on unsuitable cleared, steep slopes.

Whether on the local or federal level, erosion control, e.g. source control, is rarely addressed, and resultant sediment control is often under analyzed, inappropriate, inadequate, or poorly implemented; resulting in frequent slope failures, water body contamination, and road closures. Typical sediment control methods seen in Oaxaca and elsewhere in Mexico are hard engineering solutions such as gabions, rock fall netting, and geotextiles. Underappreciated and rarely used are biotechnical methods such as the use of vegetation for both erosion and sediment control, alone or in combination with other structures.

(Continued on Page 6)



**Julie Etra, MS, CPESC**  
President, [Western Botanical Services Inc.](#),  
Reno, USA  
Email: [etra.julie@gmail.com](mailto:etra.julie@gmail.com)







## TRAININGS

**IECA Webinars** - IECA eLearning Online Webinars are usually one hour in length and credit attendees one professional development hour. See [ieca.crhosts.com](http://ieca.crhosts.com)



## ADVERTISE WITH WCIECA

A one-year ad insertion in Western Chapter News also includes placement in the [WCIECA.org](http://WCIECA.org) [Products & Services Directory](#) and rotation of your banner ad throughout the Chapter's [WCIECA.org](http://WCIECA.org) web site!

Contact Cyndi Brinkhurst at (530) 272-2407 or [westernchapter@gmail.com](mailto:westernchapter@gmail.com) to reserve your ad space today!

## IECA NAMES ITS OUTSTANDING PROFESSIONAL OF THE YEAR FOR 2015

**Denver, Colo.** – The International Erosion Control Association Region One (IECA) has named **John McCullah** as the Outstanding Professional of the Year for 2015. This award recognizes an IECA member that demonstrates excellence in their work in the industry and is viewed by his IECA peers as an industry leader through significant engagement with the IECA. McCullah has been in the industry for more than 30 years and during that time he has become a renowned industry expert whose influence spans the globe. In addition to working across the continental United States, McCullah has completed projects in exotic and dramatically different locations such as Malaysia and New Zealand.



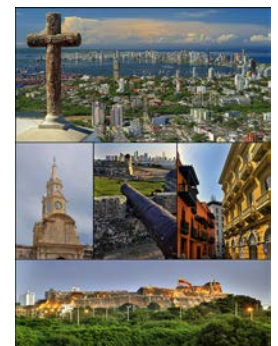
He is a teacher, a scholar, an activist and a professional; and in each of these roles he has made significant positive impacts on the industry in a number of ways over the years. John is a member of the Western Chapter of IECA. John will be officially honored at IECA's annual conference and expo, Environmental Connection 2016 in San Antonio, Texas on February 17.

## IECA IBEROAMERICA EROSION AND SEDIMENT CONTROL CONFERENCE

Hotel Las Américas, August 14-17 2016, Cartagena de Indias – Colombia.

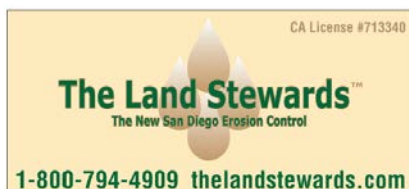
Latin America is emerging as a strong economic power with opportunities for members to assist with technical exchange of information as well as to explore international business opportunities.

Web: [www.viiiicices.org](http://www.viiiicices.org)  
E-mail: [comercial@viiiicices.org](mailto:comercial@viiiicices.org)  
Patricia Triana Cell: (313) 277-9876  
Carmen Algarra Tel. (571) 7020485





'Like' our Facebook page, comment and / or start a conversation at [www.facebook.com/WCIECA](http://www.facebook.com/WCIECA).



## CONTRACTOR SPOTLIGHT

### Best Management Construction, Inc.

We are pleased to introduce to you [Best Management Construction, Inc. \(BMCI\)](#). BMCI is a licensed, bonded, and fully insured Orange County construction company specializing in erosion and sediment control solutions to Southern California builders and landowners since 1992.

With over 23 years of experience, BMCI has become one of the most seasoned leaders in the industry. BMCI's team are highly trained professionals certified in QSP and CISEC, who hold applicable state contractor's licenses including general and specialty classifications. BMCI team members are available 24/7 to provide expertise and assistance with your erosion and sediment control needs, servicing all of Orange County and the surrounding Southern California area.

We recently sat down with BMCI's President, Julian Mendez, and asked him more about BMCI and their commitment to erosion and sediment control. Julian states that he is an active member of the WCIECA - an organization he has belonged to since 2014. The IECA keeps him up to date on the latest technology and courses required to maintain his credentials as a storm water practitioner. Julian emphatically shared that "working to save our waterways for future generations is a primary goal for BMCI." Putting BMCI's reputation behind the work and products they use are what has kept BMCI an erosion control industry leader in Southern California for the past several years. Julian also stated that BMCI is not "just about one person," but all of his employees that make BMCI the company it is today.

For more information and services BMCI provides, please contact them at

11052 1/2 Jeffrey Road, Irvine, California 92602  
Phone: 949 - 768-3882  
Fax: 949 - 768-4080



## PRESIDENT'S MESSAGE

*(Continued from page 1)*

As you can see, the Western Chapter has a lot going on, but can do even more with member support. If you have ideas for Western Chapter events and/or if you are interested in volunteering, please drop me an email ([jendicott@cascinc.com](mailto:jendicott@cascinc.com)) or look me up at EC-16 so we can talk.

Best regards,  
**Jeff Endicott, PE, BCEE, CPESC**  
President, Western Chapter  
International Erosion Control Association

## INVEST IN YOURSELF ATTEND IECA & WC-IECA EVENTS

- ✓ Get top-notch education
- ✓ Earn Professional Development Hours (PDHs) and stay credible
- ✓ Increase your professional network
- ✓ Learn about new products and equipment
- ✓ Expand your technical knowledge
- ✓ Support a cause: Attending events helps to show your support for IECA, which is a non-profit organization that provides education, resource information, and business opportunities for professionals in the erosion and sediment control industry.

## THE USE OF VETIVER GRASS FOR HEDGEROWS AND EROSION CONTROL IN THE STATE OF OAXACA, MÉXICO

*(Continued from page 3)*

In 2013, with the intent of increasing its use through broader distribution and education, Western Botanical Services, Inc. (WBS) obtained a box of bare root tillers from the Benemérita Universidad Autónoma de Puebla and re-initiated its use along the coast through the establishment of several small nurseries and projects. In 2015, hedgerow plantings were installed on small organic farms, and in the coffee-growing region of Pluma Hidalgo on over-steepened slopes. Pluma, only relatively recently settled, suffers from severe slope failures that result in property loss, road closures, decreased productivity, and almost continuous road maintenance. In 2016 additional plantings have taken place at a rural school on the outskirts of Huatulco, and at the high-end resort of Montecito, where it is being used primarily for screening and privacy.

Through successful demonstration plantings and education, we anticipate that vetiver will be adopted and more broadly used along highway corridors, in lieu of or in addition to traditional engineering solutions.

### REFERENCES

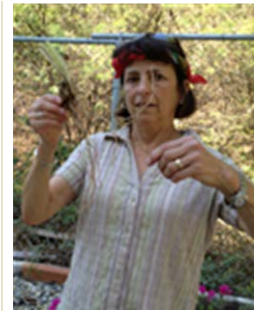
Board on Science and Technology for International Development, National Research Council. (1993). *Vetiver Grass: A thin line against erosion*, National Academy Press, Washington, D.C.

Dolphin, N. (1988). Annual Report. LASOS PARA LOS SUELOS SEMILLAS DE OAXACA ([http://www.vetiver.org/MEX\\_oaxaca.htm](http://www.vetiver.org/MEX_oaxaca.htm)).

Etra, J., and Nöfke, R. (2014). All About Vetiver. In: *Environmental Connection*, Volume 8, Issue 2, International Erosion Control Association, Denver, Colorado.

Truong, P., and Granley, B. *Vetiver System Application in the USA and Mexico*, [http://www.vetiver.org/TVN\\_VSAPPLICATION\\_USA\\_MEXICO.pdf](http://www.vetiver.org/TVN_VSAPPLICATION_USA_MEXICO.pdf)

Truong, P., Tan Van, T., and Pinners, E. (2008), *Vetiver System Applications Technical Reference Manual*, Vetiver Network International.



**Julie Etra, MS, CPESC**  
**President, Western Botanical Services Inc.**,  
**Reno, USA**  
**Email:**  
**[etra.julie@gmail.com](mailto:etra.julie@gmail.com)**



### ADVERTISE WITH WCIECA

A one-year ad insertion in *Western Chapter News* also includes placement in the [WCIECA.org](http://WCIECA.org) Products & Services Directory and rotation of your banner ad throughout the Chapter's [WCIECA.org](http://WCIECA.org) web site!

Contact Cyndi Brinkhurst at (530) 272-2407 or [westernchapter@gmail.com](mailto:westernchapter@gmail.com) to reserve your ad space today!





**93 years providing seed solutions that work with nature.**

**800-621-0315**  
**www.stoverseed.com**



**Living Soil Membrane**

Learn More 

**Debbie Ceaglio, Commercial Sales Agent**  
**(530) 257-7291 | CA Lic #0E05639**

*Environmental Business Insurance  
Tailored to Your Unique Needs*

 **Flanigan-Leavitt**  
Insurance Agency, Inc.

Worldwide Experts in:

- Erosion Control
- Retaining Walls & Soil Reinforcement
- Roads & Pavements
- Coastal & River Protection

Engineering a better solution  
Visit us at:  
**www.maccafferri-usa.com**

**MACCAFERRI**

**LINWOOD SUPPLY INC.**

If Your Storm Water is as Clear as Mud™ — then call us for your BMP Requirements.

**Tensar.**  
NORTH AMERICAN GREEN®

**(707) 678-5087 www.LinwoodSupply.com**

Wholesale Seed to the Erosion Control and Restoration Industries

**Pacific Coast Seed**

California Native Grasses, Wildflowers & Forbs

**(925) 373-4417, info@pcseed.com**  
or visit: **www.pcseed.com**

Phone: 661.295.3013  
**www.swres.org**

**SWR**

NOI's - SWPPP's -  
TRAINING - INSPECTION

**Storm Water Resources**

**ESCAPE THE STATUS QUO!**

**RECYCLED REUSABLE RECYCLABLE**

The ERTEC advantage:  
Half the Cost, Twice the Performance  
Better than ZERO WASTE

 **ERTEC.**

Learn more at **www.ertecsystems.com**

## UPCOMING DATES & MEETINGS

### UPCOMING EVENTS

Feb 16-19, 2016: (San Antonio, TX) Environmental Connection 2016 is the largest gathering of erosion and sediment control professionals from around the world. With the increase of enforcement of regulations, there is no better time to be a manufacturer or supplier of erosion control and stormwater products. Show your product to the professionals who specify its use, the contractors who buy and use it, and the regulators who monitor the sites - all at one show. Don't miss the chance to capture your share of this growing market-join us in San Antonio, Texas February 16-19, 2016. See [ieca.org](http://ieca.org).

Feb 17 (5:00 p.m. – 6:00 p.m.) Western Chapter General Meeting and Mixer (Henry B. Gonzalez Convention Center in San Antonio, TX. Room 302B)

May 3-4 (Shasta College Erosion Control Training Facility in Redding, CA) Erosion Control Summit with exhibitor opportunities!

Here's a link to find out more about the Shasta College Erosion Control Training Facility:  
<https://www.youtube.com/watch?v=zAz71FgysM8>

### UPCOMING WEBINARS

See [ieca.org](http://ieca.org) for more details

[March 16 - Lessons Learned from 46,000 ESC Inspections](#)

[April 6 - IECA Vendor Webinar: Maximizing Project Success with Site Design Software - Presented by Profile Products](#)

[April 20 - Hydromodification - Causes, Effects, and Mitigation](#)

### UPCOMING DEADLINES

Mar 31 - [MS4 Conference - Call for Presentations Deadline](#)

## TRAINING

**EnviroCert International** provides oversight and direction for the CPESC, CESSWI, CPSWQ, CMS4S certification programs.  
Phone: (828) 655-1600  
[david@envirocertintl.org](mailto:david@envirocertintl.org)  
[www.envirocertintl.org](http://www.envirocertintl.org)

### California Construction General Permit QSD and QSP Training

Courses provided by CASQA-qualified CGP Trainers of Record (CGP-ToR). Professionals developing SWPPPs (QSDs) or professionals implementing SWPPPs (QSPs) under the CA construction general permit must complete this training. For training classes, go [here](#).

**Training-Offered by CISEC** - For one and one-half day construction site inspector training modules on sediment and erosion control. Visit [www.cisecinc.org](http://www.cisecinc.org) for various dates and locations coming up in California.

**IECA Webinars** - IECA eLearning Online Webinars usually are one hour in length and credit attendees one professional development hour. See [ieca.crhosts.com](http://ieca.crhosts.com)

## PROFESSIONAL LISTINGS

**JL STORM WATER CONSULTANTS, INC.** is a State Certified SBE/DBE/WBE/UDBE Company. [www.jlstormwater.com](http://www.jlstormwater.com). Jane Ledford, Principal, [jane@jlstormwater.com](mailto:jane@jlstormwater.com) or (619) 922-6511. Services include: Environmental Permit Preparation, Processing and Compliance, SWPPP Preparation and Processing, SWPPP Implementation, SWPPP Inspections, SWPPP Training including the newly adopted Construction Storm Water Permit, Trainer of Record for the QSP/QSD classes, Construction Monitoring, Biological Resources Monitoring, Cultural Resources Monitoring, Coordination with Native American Monitors, English-Spanish Translation of Worker Education Materials.

**MACCAFERRI** - For over 135 years, Maccaferri has provided innovative, sustainable products and solutions to the construction industry. With locations in more than 100 countries, Maccaferri is a world leader in gabion retaining structures and offers engineered solutions in Erosion Control and River Training; Basal Reinforcement for Roads; Railways and Embankments; Retaining Walls and Sloped Soil Reinforcement Applications; Soil Stabilization and Paving; Rockfall Protection; Mining Solutions; Coastal Protection & Waterways Management; as well as Landfill Reclamation and Polluted Sites. At Maccaferri, our goal is to become a leading international provider for advanced solutions for the civil engineering and construction market. Contact: Pino Cignarella, West Coast Sales Manager (916) 371-5805 or [wcoffice@maccaferri-usa.com](mailto:wcoffice@maccaferri-usa.com).

**SUSTANE NATURAL FERTILIZERS** - For over 30 years of continuous operation, Sustane Natural Fertilizer, Inc. has produced the highest quality Natural Based and Organic Fertilizers and Soil Amendments distributed in the U.S. and exported to 50 countries worldwide. [Sustane](http://Sustane.com) Natural Fertilizer maintains and operates its U.S.E.P.A. permitted compost site, manufacturing facility and corporate offices from Cannon Falls, MN. Sustane Fertilizers and Soil Amendments provide readily available, balanced nutrition with beneficial microbiology to provide the basic soil components for exceptional plant establishment and long term sustainability. Call (800) 352-9245 to speak with a Sustane Regional Specialist or with our International Team Leader.

**PACIFIC COAST SEED** is Northern California's premier supplier of CA native grasses and wildflowers, turf grass seed, and other erosion control materials such as fertilizers, mulches, and soil amendments. We provide seed and other materials for diverse applications including restoration, reclamation, revegetation, ornamental landscaping, and erosion control. We offer specialty seed collection from site-specific sources. For more information checkout our website [www.pcseed.com](http://www.pcseed.com) or contact us at (925) 373-4417 or [info@pcseed.com](mailto:info@pcseed.com).

**LINWOOD SUPPLY, INC.** is your distributor of BMPs for Erosion Control and Storm Water Management offering Erosion Control Blankets, TRM products, Fiber Rolls, netting, HydroFiber™, Soil Polymers, dust controls, fertilizers, seed, manmade and natural chemistries, and generally providing you with the kind of service and professionalism you deserve. Linwood Supply, Inc. is a certified small Business based in California, a member of the International Association of Hydroseeders, and a proud member of the Western Chapter IECA. If Your Storm Water is as Clear as Mud™ - Please call us at (707) 678-5087 or visit us at [www.linwoodsupply.com](http://www.linwoodsupply.com).

**MARVIN E. DAVIS & ASSOCIATES, Inc.** focuses on the challenging issues of the Tahoe Basin and Northern Nevada / California terrain. Our professionals provide a diverse and solid background in geotechnical engineering; specialized engineering design; erosion control services; construction and forensic inspection services and materials testing; and, regulatory and compliance issues to enable project approval. Phone (775) 853-9100 or visit us at [www.mdageotechnical.com](http://www.mdageotechnical.com).

**KELLEY EROSION CONTROL, INC.** established in 1983, recognized throughout Nevada and California as a leader in the industry. KEC has an excellent reputation known for quality, competency, solutions, innovative ideas, cutting edge technology, excellence, and client satisfaction. Services include: hydroseeding, site preparation, dust control applications, BMPs, storm water pollution inspection and monitoring, revegetation and project maintenance, site winterization, wetland mitigation, stream channel stabilization, planting and irrigation, mining reclamation, soil stabilizer applications, biotechnical applications, fire restoration/ rehabilitation, water quality, turbidity control & pH sampling for SWPPP requirements. Contact - Claudia Chambers CPESC, CISEC, QSP, [claudia@kelleyerosioncontrol.com](mailto:claudia@kelleyerosioncontrol.com), phone (775) 322-7755. Visit us at [www.kelleyerosioncontrol.com](http://www.kelleyerosioncontrol.com).

## GET LISTED!

*Within the stormwater field we are always chanting – “reduce your exposure.”*

*Well, here is a chance to **get targeted exposure** – contact Cyndi Brinkhurst at (530) 272-2407 or at [westernchapter@gmail.com](mailto:westernchapter@gmail.com) to reserve your ad space today!*



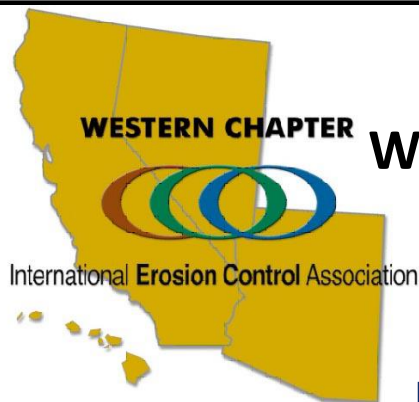
## PRODUCT REVIEWS WANTED

*Do you have a technical article, regulatory update, contractor to highlight or event announcement you'd like to share with your fellow members?*

*Please forward articles to Cyndi at [westernchapter@gmail.com](mailto:westernchapter@gmail.com) and we'll publish them in the next issue of Western Chapter News!*

*Thank you!*





## Western Chapter IECA Mixer

**Wednesday, February 17<sup>th</sup>**

**Time: 5:00 – 7:30 p.m.**

**Henry B. Gonzalez Convention Center**

**Room: 302B**



28064 AVENUE STANFORD UNIT K.  
VALENCIA, CA. 91355  
PHONE: 661.295.7228 \* FAX: 661.295.7230

### Gold Sponsors



*Best Management, Inc.*

*Oakridge Landscape*

*Terra Novo*

*Western Chapter*



### Silver Sponsor

*Storm Water Resources*



Join the Western  
Chapter after The  
Chapter Meeting for  
some networking,  
cocktails and food

**Attend the Western  
Chapter Annual  
Meeting and receive a  
free drink ticket!!**