



# WESTERN CHAPTER NEWS

## INTERNATIONAL EROSION CONTROL ASSOCIATION

*Serving Erosion Control Professionals in Arizona, California, Nevada and Hawaii*

Volume 19, Issue 1  
**SPRING 2015**

## EC-15 Highlights from Portland

### In this Issue...

President's Message .....	2
EC-15 Photo Highlights .....	2
Kudos to... ..	2
2014 WCIECA Highlights .....	3
Drought, Drought, Conserve, Conserve and Conserve .....	3
Contractor Spotlight .....	4
Scholarship Available .....	4
Insurance Coverage for an Environmental Business .....	5
Regulatory Update .....	7
Upcoming Dates & Events ..	7
EC-16 in San Antonio .....	9
Professional Listings .....	10
Training Courses, Exam Reviews and Exam Dates ...	10
EC BMP Summit Redding, CA April 30 - May 2 .....	11
Registration Form .....	12
Get Social - How to Host a WCIECA Mixer .....	13



From left to right: Greg Naffz, Peter McRae, Jeanne Duarte, Cyndi Brinkhurst, Chris Marr, Jeff Endicott, Jane Ledford, Tyler Palmer

By all accounts, IECA Environmental Connection Conference 2015 (EC -15) in Portland was a huge success and great opportunity to re-connect with fellow members.

Some highlights include the following:

- Nearly 2,700 industry professionals attended;
- The Western Chapter IECA (Western Chapter) had a great turn-out, roughly 157 members attended;
- In addition, 123 non-members from the Western region attended;
- Craig Benson and Julie Etra of the Western Chapter continued to tirelessly serve on the IECA Board of Directors;
- Some 20 Western Chapter Members served on various IECA committees;
- The Western Chapter hosted a mixer that was not only well attended, but served as a great venue for members of all chapters to mingle and share ideas; and
- Exhibitors included 19 from our region.

The Western Chapter would like to thank the following sponsors:

- |              |  |                |   |
|--------------|--|----------------|---|
| <b>Gold:</b> | <ul style="list-style-type: none"> <li>▪ Oakridge Landscape</li> <li>▪ Terra Novo</li> <li>▪ Marina Landscape</li> <li>▪ Western Chapter IECA</li> </ul> | <b>Silver:</b> | <ul style="list-style-type: none"> <li>▪ Storm Water Resources</li> <li>▪ Pacific Coast Seed</li> </ul> |
|              |  | <b>Bronze:</b> | <ul style="list-style-type: none"> <li>▪ Sustane Natural Fertilizer</li> </ul>                          |

### Visit Our Web Site!

Get the latest Chapter news online—Check it out today!  
[www.wcieca.org](http://www.wcieca.org)

The Western Chapter would also like to thank all of our members who were in attendance. See **page 2** for a few photos from EC-15. Lastly, we, at the Western Chapter would like to acknowledge all the hard work and dedication that the IECA Executive Board and IECA staff put in that made EC-15 a tremendous success. 🌱



# President's Message

I would like to take a moment to thank all of our Members for their continued membership and to let you know that as Board, we value not only your membership with the Western Chapter, but your continued involvement. With this thought in mind, if you have any ideas or thoughts on how better the Board can serve the Membership, feel free to drop me an email at [stormwaterca@att.net](mailto:stormwaterca@att.net) or call me at (805) 237-9938.

Also, I appreciate the opportunity to continue to serve the Membership and work with such a great group at the Board.

Again, my best to all!

Doug Dowden  
WCIECA President

## Kudos to...

Do you know of a Member who has gone the extra mile on behalf of the Western Chapter? Do you know of a Member who is implementing innovative techniques and/or technologies in the field? Then let us know so that we can acknowledge their outstanding contributions or achievements in the field of Stormwater. We encourage you to send us a short write-up outlining a fellow member's outstanding contributions and/or achievements for our next newsletter to [stormwaterca@att.net](mailto:stormwaterca@att.net).

**Jeanne Duarte**, our Technical Vice President – Special thanks and accolades go out to Jeanne for spearheading the social mixer sponsored by the Western Chapter at EC-15. If you missed it, I am sure that we will do a repeat performance at EC-16.

**Craig Benson** – Former Western Chapter Board Member, friend to all and IECA Board Member – We are always indebted to Craig for his dedication and commitment to the Western Chapter. Recently, Craig carried the Western Chapter's concerns to the IECA Board and thus thank you Craig.

**Jeff Endicott, David Franklin & John McCullah** – During the recent EC-15 conference, Jeff with CASC Engineering, John with Salix Applied Earthcare and David Franklin with Envirotech Services connected. This connection has led to a joint "Erosion Control BMP Summit" to be held at Shasta Community College in Redding California for April 30–May 2, 2015. This will be a great event that all members in Northern California should attend. Even if you don't live in the northern part of California, John and David put together great workshops and training events. A big thank you to Jeff, David and John for all their efforts in bringing this "Summit" together.

**Jeanne Duarte, Peter McRae, Jeff Endicott, Greg Nafz, Jane Ledford, Cyndi Brinkhurst, Tyler Palmer and Chris Marr** – Simply, thank you, for your dedication and commitment to the Western Chapter and your above-and-beyond efforts in representing the Western Chapter at EC-15. Thank you!

**IECA Executive Board and Dedicated Staff** – Lastly, we, at the Western Chapter, would like to acknowledge all the hard work and dedication that the IECA Executive Board and IECA staff put in to making EC-15 a tremendous success. Thank you from all of us at the Western Chapter!



Check out our **Facebook** page to see photos taken by Cyndi at the conference! 'Like' our Facebook page, comment and/or start a conversation!  
[www.facebook.com/WCIECA](http://www.facebook.com/WCIECA)



**Doug Dowden**  
CPESC, QSD/QSP, CMS4S  
WCIECA President  
[stormwaterca@att.net](mailto:stormwaterca@att.net)

Environmental Compliance  
Specialist, LLC  
(805) 237-9938

## Photo Highlights from EC-15



Conversation during the Chapter meeting at EC-15.



Western Chapter mixer at EC-15.



Marv Davis - New Nevada Ambassador with Kym Kelley, Claudia Chambers, Julie Etra (all from NV) and BM Mixer organizer Jeanne Duarte.





## 2014 WESTERN CHAPTER HIGHLIGHTS

2014 proved to be a productive year for the Western Chapter; however, as a Board, our goal is to provide more added value service to our members in 2015. Here are some highlights for 2014.

**Sacramento Area Drought Symposium November 5, 2014** - As noted in our recent e-blast update in December, we, at the Western Chapter deeply appreciate the efforts of all who worked on bringing this event together, our sponsors and the host, The City of Rancho Cordova.

**Chapter Management Award 2014** - And the winner is... the Western Chapter! This award reflects member commitment and involvement. We would like to applaud the following Western Chapter members who were actively involved in the following IECA committees in 2014:

- **Awards/Recognition**  
Craig Benson, Jeanne Duarte and Greg Naffz
- **Chapter President** - Doug Dowden
- **Conference Planning**  
Sandra Mathews and Mike Harding
- **Editorial** - Julie Etra
- **Education** - Dennis Richards
- **Finance**  
Mike Chase and Sandra Mathews
- **Future of the Association Strategy Team** - Mike Chase
- **Government Relations**  
Kent Stevenson
- **Past Presidents Council**  
Mike Chase and Gerry Hester
- **Professional Development**  
Mike Chase, Julie Etra and Teresa Jakeway
- **SOIL Fund**  
Julie Etra and Craig Benson
- **Standards and Practices**  
Greg Balzer, Craig Benson, Julie Etra, Chris Marr and Sandra Mathews

## Drought, Drought, Conserve, Conserve and Conserve

“Drought, drought, conserve, conserve and conserve” are the mantra we keep hearing. It is like Ground-Hog Day over and over again. As the drought persists and worsens in the Western states, legislators and governors continue to craft legislation to not only reduce individual demand on limited water supplies and reduce water waste, but also to control general water usage. Water supplies are at critical levels throughout the Western states: Snowpack levels are roughly 25% of norm in the Sierra, which is a critical source of potable water supply throughout the Western states; Lake San Antonio in southern Monterey County is less than 5% of total capacity; Lake Nacimiento in northern San Luis Obispo County is less than 25% of total capacity; and groundwater draw statewide has far exceeded groundwater replenishment for over a decade.



**Doug Dowden**  
CPESC, QSD/QSP, CMS4S  
WCIECA President  
[stormwaterca@att.net](mailto:stormwaterca@att.net)

Environmental Compliance  
Specialist, LLC  
(805) 237-9938

Similar to another article in this newsletter, as we do the right thing and conserve water, we then face a potential penalty or unintended consequence—water rate hikes. Yes, as we conserve more water and use water more wisely, purveyors assert they must increase per unit water rates in order to meet their operational cash demands. Talk about an oxymoron. As we comply with state mandates, do the right thing and better utilize this precious limited natural resource, water purveyors keep raising rates to ensure a minimum operational cash flow.

On top of this, recent regulations restrict and even prohibit the washing down of exterior surfaces (i.e., patios, walkways) throughout California; however, water supplies continue to deplete at alarming rates. Pending bills may soon affect how construction sites are able to manage dust. Managing dust will soon require stormwater and water quality experts to invent and implement new methods (i.e., non-water based) and strategies to reduce dust generation on construction sites if various bills pass. Only time will tell! ☁

## Be All You Can Be

An organization is only as strong and active as its members — will you become active? A few good people are needed on all the committees — many hands do make light work! Please see the Committees List on our website to see how your talents and interests may benefit your peers and email the chairperson of that committee today! At least two more candidates will be needed at our upcoming election in June for our Board of Directors—will you answer the call or nominate a good candidate? Think about it...do people say you are a “good leader”? ☁

### Call for Articles

Do you have a technical article, regulatory update or event announcement you'd like to share with your fellow members? Please forward articles to Doug Dowden, WCIECA Editor-in-Chief at [stormwaterca@att.net](mailto:stormwaterca@att.net) and we'll publish them in the next issue of *Western Chapter News*! Thank you!

### Advertise with WCIECA

A one-year ad insertion in *Western Chapter News* also includes placement in the [WCIECA.org](http://WCIECA.org) Products & Services Directory and rotation of your banner ad throughout the Chapter's [WCIECA.org](http://WCIECA.org) web site! Contact Cyndi Brinkhurst at (530) 272-2407 or [westernchapter@gmail.com](mailto:westernchapter@gmail.com) to reserve your ad space today!



Engineering and Consulting

[www.cascinc.com](http://www.cascinc.com)

Providing Clients with  
Innovative Environmental,  
Engineering, Planning and  
Surveying Solutions

Offices in Burbank, Colton,  
Irvine and Palm Desert

**855.383.0101**

# Contractor Spotlight

Ames Construction, Inc. is a family owned business, just 2 years ago celebrating 50 years founded by Dick Ames. The family continues to run the company to this day, with the main headquarters in Burnsville MN and regional offices across the United States.



## Ames Construction, Inc.®

We recently asked Teresa Jakeway, Ames Construction's California Environmental Manager, CPESC, CPSWQ, CESSWI, QSD and Western Chapter member since 1998, about her experience, her daily challenges and any challenging jobs that she wanted to spotlight; here is her response.

Regarding personal experience: "I have more than 25 years in the construction industry, 20 of those in environmental compliance primarily. I managed grading operations at a time when the focus on storm water compliance was just starting to be enforced heavily in the Los Angeles and Ventura Counties of California. I worked for Gothic Landscape, Inc. at the time and they recognized the need for storm water expertise within their operations and supported the pursuit of a more thorough understanding of compliance to support their clients."

Regarding daily challenges: "I would have to say that day to day, the biggest challenge is meeting compliance needs on projects for our clients in the field in a way that puts everyone on the same page. We are all individuals with different roles and responsibilities and we interpret things differently. It is, however, critical that the way we manage compliance on our projects translates to compliance in the field. The only way to ensure that this is a constant is to build it into the work."

Regarding challenging projects: "Recently, our Caltrans I-215 Gap Closure Project Team won an award for partnering in the delivery of this project. This project consisted of 7 miles of freeway expansion, 3 BNSF railroad bridges, 6 steel trusses, 1.1 million pounds of steel per span, and widening of the I-10 overpass over the Santa Ana River. Partnering with respect to the environmental aspects of this project was definitely a component. 'Partnering' is exactly what it takes to build a dynamic, fast paced, environmentally challenging, budget-restrictive project and have everyone reaching for a common goal. Working with this team has been a definite highlight of my career."

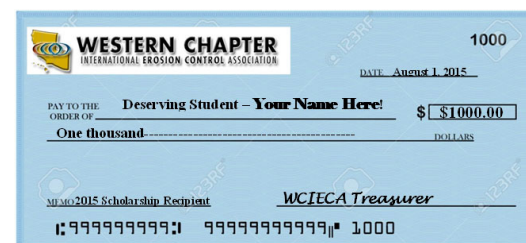
"Challenges are definitely ever present in this industry! We dedicate a lot of time to education and planning up front. We do live training at every project that we are on, so that project-specific discussion and strategy meet the challenges where they are—in the field."

We want to extend a special thanks to Teresa Jakeway for taking the time to share a little bit about her professional experience with the Western Chapter. ☁

**Ames Construction, Inc.**  
391 N Main Street, Suite 302  
Corona, CA 92880  
Southwest: (951) 356-1275

# Western Chapter Scholarship Available

**DEADLINE: JULY 1**



Please let students, your *alma mater*, alumni association and academic contacts know that the Western Chapter is offering an academic scholarship.

For 2015–16, we have one \$1,000 scholarship available for junior-, senior- or graduate school-level students with a demonstrated **interest in pursuing a career in the erosion and sediment control profession AND who are enrolled in a related degree-program at an accredited 4-year college or university.**

Since erosion and sediment control is a cross-disciplinary field, a wide variety of degree-programs will be considered, such as engineering, hydrology, soils, geology, forestry, environmental studies, range management, watershed, ecology, natural resources planning, etc. Students must be enrolled in institutions within the four-state area of the Western Chapter: CA, AZ, NV, or HI.

Applicants must submit a 500-word essay, three letters of recommendation and post-secondary academic transcripts (unofficial transcripts will be accepted) along with the application.

Applications are due on **July 1** of each year preceding the fall academic year to which the scholarship will be used. Awardees will be notified by August 15.

Interested students may download applications from the Western Chapter website, [www.wcieca.org](http://www.wcieca.org), or may contact Cyndi Brinkhurst at [westernchapter@gmail.com](mailto:westernchapter@gmail.com). Help us spread the word out about this exciting opportunity! ☁



# Securing Insurance Coverage for an Environmental Business

You're enjoying the energy of a festive party in full stride when a striking woman materializes before you. Backed up against the kitchen sink, small talk soon gets around to "So, what do you do?" to which you reply "I'm in erosion control." At this juncture you might well be greeted with a disconcertingly blank stare, possibly accompanied by her now-dulled blue eyes shifting to gaze over your left shoulder. You can tell she's telegraphing that "How do I politely get away from this guy" look.

Certain topics of insurance share much in common with "being in erosion control." For the vast majority of folk, if we think about it at all we hope to never need it. Few of us understand it beyond the basics of "we all contribute a little to bail out the unlucky (or irresponsible) few." It has its own language, complete with incomprehensible terminology. It doesn't generate income; it's seemingly expensive until you have valid occasion to file a claim. It's boring.

But for those of us who incorporate a business to sell goods and services, it's a BMP we should not be without. We're talking about Commercial General Liability insurance — the first blanket on the bed.

## Commercial General Liability Insurance

Business liability insurance is third-party insurance: The damages are paid to outside individuals who file claims, not to the insured business or business owner. The insurance pays the cost of a legal defense if the insured business is sued, and it pays damages up to the limit of the policy if the insured business is found legally responsible for bodily injury or property damage.

These policies can be written on either a claims-made basis or an occurrence basis. If the policy's written on a claims-made basis, the insurance company will pay claims filed during the time the policy is in effect, regardless of when the event leading to the claim actually occurred. If the policy's written on an occurrence basis, the reverse is true: The insurance company will pay claims only for damage or injury suffered because of events occurring while your policy's in force, regardless of when the claim is filed.

Commercial general liability (CGL) insurance protects your business against claims for bodily injury and property damage, personal injury, and advertising injury. It also provides medical payments coverage to individuals injured on company premises. This coverage can be purchased separately or as part of a commercial package policy (CPP). A CPP combines several types of coverage that the insured business chooses based on its needs. A typical policy includes general liability coverage along with property, crime, and boiler and machinery coverage.

Check what might be excluded in the CGL coverage; coverage for these excluded areas may be purchased as endorsements to the CPP or as specialized policies. These needs can include pollution and environmental liability insurance, manufacturers and contractors insurance, and product liability coverage, among others.

A similar type of protection for professionals engaged in providing consulting services (selling advice) is called Errors & Omissions insurance (or professional liability insurance).



**Peter McRae**

*WCIECA Treasurer*

[pmcrae@quattroenvironmental.com](mailto:pmcrae@quattroenvironmental.com)

Quattro Environmental, Inc.

(619) 522-0044

## Commercial Umbrella Policies—A Bigger Blanket

If you think that your business might need broader coverage or higher liability limits than what's available through your CGL coverage, you may want to buy a commercial umbrella liability policy to supplement your coverage. You'll need to own basic liability coverage with certain limits before you'll be issued a commercial umbrella policy. If a claim is filed against your business, the underlying CGL policy pays first, up to its policy limits. Beyond those limits, the commercial umbrella policy will pay the claim up to its own limits. If the umbrella policy covers a loss excluded under the basic CGL policy, then the umbrella policy pays first.

Even when one is engaged in a seemingly low risk activity (such as "growing grass" for heaven's sake), you may be compelled by a goods and services bid contract to provide proof you have commercial general liability and Errors & Omissions insurance.

## How to Secure Insurance Coverage

(observations derived from more than a few false starts)

1. Initially, spend some time familiarizing yourself with what commercial general liability insurance and errors & omissions insurance is all about. Google it. You are probably already conversant with business property insurance - to cover your assets against losses that result from natural and man-made causes - as well as workers' compensation insurance, in addition to your home insurance and car insurance.
2. I highly recommend you consider investing your time by attending a half-day seminar covering basic business insurance, possibly sponsored by your local Chamber of Commerce or a volunteer group such as SCORE (A nonprofit association dedicated to encouraging the formation, growth, and success of small business nationwide through counseling and mentor programs). This will help you determine what categories of insurance you require, and at what level, and what categories of insurance you do not require.
3. Locate a capable insurance broker. This is easier said than done. Your broker will be your conduit to the vast world of insurance underwriters who will ultimately "write you a policy." That is, they will agree to provide you with the liability coverage you seek in return for you paying them a premium check.

I went through the basic motions outlined above, working outwards from what I was already familiar with. For example, I checked in with the nationwide insurance company that has handled all our home-



owners insurance and car insurance matters for over two decades. Initially this looked promising; the firm is currently expanding its homeowner policy insurance activities to include insurance coverage for businesses. They just were not ready for anything that had the term “environmental” associated with the business.

I checked in with IECA Denver headquarters to see whether the IECA membership had an “in” with an insurance company. We do, but the midwest-based company I was referred to had no interest in insuring a company in California.

I approached a local commercial insurance broker upon the referral of a construction contractor who builds \$5 million dollar homes (not mine). I figured that anyone sophisticated enough to insure a construction operation that disturbs soil on the California coast and erects fancy homes designed by architects for rich (litigious?) clients should understand a little guy who “grows native grass.” I struck out again! It was time to pay attention and adopt a more systematic approach.

What I Learned

So I followed my advice (#2 above) and attended a SCORE half-day seminar. It was time well spent. While we merely covered the basics of small business insurance, the experience enabled me to observe a true professional in action. I followed this up with a 2-hour private one-on-one session during the Christmas-New Year holiday break. I realized that we in the erosion control/stormwater industry are unique; no one in the insurance industry has a clue what we are all about. And what they don’t know about you, can hurt you tremendously.

Why? First, the term “environmental” is now a dirty word. It may have once conjured up images of green meadows and golden silver birch tree leaves sparkling in the breeze, but no longer is this true. Today “environmental” evokes images of nuclear-contaminated devastation, asbestos clean-up, toxic dumps; which to an underwriter translates into open-ended vulnerability to unbounded liability because somehow you might become involved in this quagmire of environmental devastation.

Second, and leading from “1” above, my SCORE mentor (36 year veteran and now-retired former Executive Vice President/Principal of John Burnham Insurance Services) provided invaluable assistance in guiding my writing of a brief description of exactly what our company Quattro Environmental, Inc. does on a day-in day-out basis. It’s critically important to also review, from an insurer’s perspective, what one’s website declares what one does. You will be amazed how easily just describing how one gets out of bed in the

morning can be interpreted by insurance underwriters as being an EPA Superfund site in the making unless one is very careful with how you describe your business. SCORE is a national association which serves as a resource partner with the U.S. Small Business Administration. SCORE in downtown San Diego, CA can be reached at (619) 557-7272.

Third, whether it be a mentor or a colleague operating in our industry who refers you on to a broker who is already familiar with our industry, and/or who will go the extra mile to understand our industry in route to effectively describing your business to a selected group of candidate underwriters, such referrals can make the difference between successfully securing coverage at a reasonable premium cost, or not receiving a quote at all! When there is doubt as to the full extent of your business risk, expect a higher than reasonable premium quote for your insurance business.

And then you can get lucky. I got lucky by having written directors’ liability premium checks to Debbie Ceaglio of the Leavitt Group (530) 257-7291 Ext. 1110 [debbie-ceaglio@leavitt.com](mailto:debbie-ceaglio@leavitt.com) in my capacity as Treasurer of WCIECA over the past few years. By the time I approached Debbie, however, my SCORE mentor had guided me to becoming an insurance-literate candidate client.

There are other brokers who were kind enough to utilize their expertise to elicit insurance coverage invitations, any one of which might end up being able to hunt down a “perfect fit” between your business and an insurance underwriter willing to provide you with the liability coverage appropriate to your needs at a reasonable cost:

Debbie Ceaglio ..... 530-257-7291 Ext. 1110  
Leavitt Group, Susanville, CA

Frank Dungan ..... 619-640-3130  
5th Avenue Insurance, San Diego, CA

Jolinda Kramer ..... 619-234-6848  
Cavignac & Associates, San Diego, CA

My SCORE mentor: Bill Pope ..... 619-557-7272

Now when that striking woman materializes before you and asks “So, what do you do?”, you can with confidence respond “I’m working to save the world.” Who knows? She may also have read Pulitzer Prize-winning author Jared Diamond’s “Collapse” treatise on how societies choose to fail or succeed and you’ll be away laughing together into the night. ☁

# Regulatory Movement & Updates

## Water Quality Violations & Third Party Suits

As environmental regulations continue to grow and become stricter, citizen suits for storm water and water quality violations are expanding at an alarming rate. Section 505 of the Clean Water Act (33 U.S.C. §1365) authorizes private parties to commence civil actions against alleged violators of the Clean Water Act and permit requirements. Companies and governmental agencies have more to lose than simply a court decision that in-effect will require program enhancements—claimants' attorney costs are a guaranteed verdict. As more and more documents are required to be recorded on-line (i.e. SMARTS), it is becoming extremely easy for third parties to bring actions against a private company and/or agency for "documented water quality violations."

Yes, the unintended consequence of being forthright in documenting and reporting a water quality violation and/or simply program violation is that you have provided a third party with clear proof that your organization and/or company violated the law. Recent court rulings have taken the position that such evidence guarantees that the group bringing the action forth that prevails or substantially prevails is entitled to attorneys' fees.

Savvy legal professionals view this as a cash windfall, a guaranteed payday! In fact, a highly respected environmental lawyer noted that the standard is that first year lawyers are now billing out at partner rates when bringing forth interested party suits. However, failing to report storm water / water quality violations may likely result in criminal sanctions against the Legally Responsible Party (LRP) or commonly (and jokingly) referred to as the "dedicated felon" in the legal field.

The end result is that letters of demand are being issued out at an alarming rate to companies and agencies that have complied with regulations by self-reporting storm water / water quality violations.

## Statewide Trash TMDL Policy

*Statewide Water Quality Control Plans for the Ocean Waters of California to Control Trash and Part 1 Trash Provisions of the Water Quality Control Plan for Inland Surface Waters, Enclosed Bays, and Estuaries of California*

If you haven't heard, the proposed Statewide Trash TMDL Policy is out for final review. This policy, although well intentioned, places significant burden on many local agency's limited resources and will significantly affect both permitted industrial facilities and construction sites. Industrial and construction permitted facility operators face an outright prohibition of trash discharges from their sites. Local agencies must implement one of two tracks in order to target trash discharges from priority land areas. The Permit may be found on the State Water Resources Control Board's website under Stormwater at:

[www.waterboards.ca.gov/water\\_issues/programs/tmdl/](http://www.waterboards.ca.gov/water_issues/programs/tmdl/)

By the way, the Permit will generate significant amounts of work for both consultants and manufacturers of trash-capturing systems.

## State Water Resources Control Board's Utility Vault Permit

The State Water Resources Control Board's Utility Vault Permit, Order 2014-0174-DWQ, General Permit No. CAG990002 goes into effect July 1, 2015. Utility companies (i.e., suppliers of natural gas, electricity, internet, cable television, telephone services,



**Doug Dowden**  
CPESC, QSD/QSP, CMS4S  
WCIECA President  
[stormwaterca@att.net](mailto:stormwaterca@att.net)

Environmental Compliance  
Specialist, LLC  
(805) 237-9938

# Upcoming Dates

## 2015 Board of Directors Meetings

**May 12** (Conference Call) from 9 a.m.–12 p.m.

## Deadlines

**May 29** Call for Presentations for Environmental Connection 2016 (EC-16). See [ieca.org](http://ieca.org)

**July 1** Western Chapter Scholarship applications are due. See [www.wcieca.org](http://www.wcieca.org)

## Upcoming Events

**April 14** (Raleigh, NC) Erosion and Sedimentation Control Planning and Design Workshop. See [ncsu.edu/wrri/code/events/upcomingevents2.htm](http://ncsu.edu/wrri/code/events/upcomingevents2.htm)

**April 30 - May 2** (Shasta, CA) Erosion Control BMP Summit I – A two-day workshop sponsored by Shasta College, Sacramento Watersheds Action Group (SWAG), and Western Chapter International Erosion Control Association. See [www.wcieca.org](http://www.wcieca.org)

**May 31-June 5** (El Paso, TX) 18th International Soil Conservation Organization Conference. See [tucson.ars.ag.gov/isco/](http://tucson.ars.ag.gov/isco/)

**June 7-10** (Anaheim, CA) The American Water Works Association will host their Annual Conference (ACE) to address and present solutions to water utility challenges. The four-day professional program will cover key topic categories and will include new categories on emerging issues in biological treatments, water reuse, stormwater, and wastewater. See [www.awwa.org](http://www.awwa.org)

See **Dates**, continued on Page 8



**STORM WATER  
CONSULTANTS, INC.**

COMPLETE SWPPP SERVICES; BIOLOGICAL MONITORING  
ENVIRONMENTAL PERMIT PREPARATION & PROCESSING  
State Certified SBE/DBE/WBE/UDBE  
[www.jlstormwater.com](http://www.jlstormwater.com)  
Phone: (619) 922-6511



**STOVER SEED®**

**93 years providing  
seed solutions that  
work *with* nature.**

**800-621-0315**  
[www.stoverseed.com](http://www.stoverseed.com)

**Dates**, continued from Page 7

**June 15-16** (Atlanta, GA) Municipal Wet Weather Stormwater Conference. See [ieca.org/conference/roadshow/atlantams4.asp](http://ieca.org/conference/roadshow/atlantams4.asp)

**June 15-19** (Provence, France) River Restoration; Fluvial-Geomorphic & Ecological Tools. Course is in English. See [institutbeaumont.wordpress.com](http://institutbeaumont.wordpress.com)

**July 26-29** (Greensboro, NC) 70th Annual Soil and Water Conservation Society Conference. See [www.swcs.org](http://www.swcs.org)

**August 2-6** (Austin, TX) Stormcon 2015, the North American Surface Water Quality Conference & Expo. See [stormcon.com](http://stormcon.com)

**August 27** (Bella Vista, AR) IECA Roadshow: Bella Vista. See [ieca.org](http://ieca.org)

**October 19-23** (Sydney, Australia) 9th International Water Sensitive Urban Design Conference and 3rd International Erosion Control Association Conference. See [www.wsud2015.org](http://www.wsud2015.org)

**Feb 16-19, 2016** (San Antonio, TX) Environmental Connection 2016 is the largest gathering of erosion and sediment control professionals from around the world. With the increase of enforcement of regulations, there is no better time to be a manufacturer or supplier of erosion control and stormwater products. Show your product to the engineers who specify its use, the contractors who buy and use it, and the regulators who monitor the sites - all at one show. Don't miss this chance to capture your share of this growing market—join us in San Antonio, Texas February 16-19, 2016. See [ieca.org](http://ieca.org)



etc.; not water, sewer and storm drains) provide essential services. There are two main categories of utility vaults: (1) Dry vaults, which are air-tight, temperature-controlled and contain relay switchgears, computers & other sensitive equipment, and (2) Wet Vaults that are not air-tight, not temperature controlled and include manholes and hand holes containing utility components, such as, cables, cable connections, and signal enhancers. Over time, water collects in utility vaults and must be pumped out for a host of reasons (i.e. protect equipment, vector control and safety). Prior to pumping the water (dewatering), utility companies must: (1) secure a permit, (2) develop a pollution prevention plan (Plan), (3) characterize the discharge to determine risk to surface / receiving waters, (4) provide notice to the local MS4, if required by the MS4, and (5) implement appropriate best management practices (BMPs) as identified in the Plan for the region. Permit requirements goes into effect July 1, 2015.

If you are a consultant that provides professional services to and/or hoping to provide services to a utility provider then it is recommended that you review the permit and begin marketing this new compliance service to local utility service providers.

The permit can be found at:

[www.waterboards.ca.gov/board\\_decisions/adopted\\_orders/water\\_quality/2014/wqo2014\\_0174\\_dwq.pdf](http://www.waterboards.ca.gov/board_decisions/adopted_orders/water_quality/2014/wqo2014_0174_dwq.pdf)

### State Water Resources Control Board's Industrial General Permit

The State Water Resources Control Board's Industrial General Permit, Order 2014-0057-DWQ (Permit) goes into effect July 1, 2015. The Permit will affect up to 120,000 businesses statewide. Achieving compliance with the new Industrial General Permit (IGP) is complex for a host of reasons. One of which is determining whether or not a specific facility and/or operation requires coverage or qualifies for a No Exposure Certification (NEC) or Notice of Non-Applicability (NONA) status. Even when a Notice of Intent (NOI) must be filed truly requires consultation with a Qualified Professional. Qualified Professionals are those that have completed a State-approved Qualified Industrial Storm Water Practitioner (QISP) training course.

To learn more about this Permit, please visit the State Water Resources Control Board's website at:

[www.swrcb.ca.gov/water\\_issues/programs/stormwater/industrial.shtml](http://www.swrcb.ca.gov/water_issues/programs/stormwater/industrial.shtml)

To determine if you qualify to become a QISP visit CASQA's website at:

[www.casqa.org/resources/qisp/industrial-general-permit-trainer-record](http://www.casqa.org/resources/qisp/industrial-general-permit-trainer-record)

### Drinking Water System Discharges

State Water Resources Control Board's Drinking Water NPDES Permit, Order 2014-0194-DWQ, General Permit No. CAG140001. Yet another storm water / water quality permit goes into effect this year. Drinking water purveyors throughout the State of California now have another regulation to comply with: Order 2014-0194-DWQ. All water purveyors that discharge to Waters of the U.S. either directly &/or indirectly, unless covered under another permit or exempted as noted within the Permit must seek coverage by 9/1/15.

To learn more about the consulting opportunities associated with this Permit read the Permit at:

[www.swrcb.ca.gov/water\\_issues/programs/npdes/docs/drinkingwater/final\\_statewide\\_wqo2014\\_0194\\_dwq.pdf](http://www.swrcb.ca.gov/water_issues/programs/npdes/docs/drinkingwater/final_statewide_wqo2014_0194_dwq.pdf) 



# Environmental Connection 2016 (EC-16)

Now that EC-15 is behind us, we can focus on planning and strategizing for a successful EC-16.

IECA is calling for submissions for EC-16, our annual conference and expo. Combining quality education with a top-notch expo, this is the premier gathering place for the erosion and sediment control community. The 2016 conference will be held February 16–19, 2016 at the San Antonio Convention Center in San Antonio, Texas.



**Laura Clark**  
IECA Marketing  
[laura@ieca.org](mailto:laura@ieca.org)  
International Erosion Control Association  
(303) 640-7554

New to the conference, the IECA education department has already set a timeline for meeting standard requirements. IECA will assign IACET-approved CEU credit to its full-day courses for EC-16.

IECA is focusing on the relevant issues and challenges facing erosion control and stormwater quality management professionals. Recommended hot topics for EC-16 include:

- Accounting for Pollutant Sources in Watersheds/Where Are They Coming From?
- Green Infrastructure Practices
- Rain Water Harvesting for Flood Control and Water Table Replenishment
- EPA Waters of The U.S. Rule Making
- Stormwater Compliance and Meeting Project Budgets
- Innovative Training Approaches/State and Local Certification Programs/Are They Effective?
- The Challenges and Strategies for Transportation Agency MS4s
- MS4 Compliance Strategies for Municipal Good Housekeeping
- Meeting MS4 Permit Requirements with Limited Resources
- Use of Drones for Inspections/Surveys, and Associate Legal Issues
- Successful Implementations of System for Electronically Tracking Environmental Commitment

All relevant topics in the four Education Tracks will be considered for presentation. **The deadline to submit an abstract is May 29, 2015.** For more information about the submittal process, visit [www.ieca.org/submissions](http://www.ieca.org/submissions) 



**“See You Next Year  
in San Antonio, Texas!”**

## Waves Environmental

Storm Water Specialist in Construction and Industrial Sites  
Conduct training classes for: CPESC, CPSWQ, CISEC, QSD, QSP

Phone: 760-415-9922 [www.wavesenv.com](http://www.wavesenv.com)

## LINWOOD SUPPLY<sup>INC.</sup>

If Your Storm Water is as  
Clear as Mud<sup>TM</sup> — then call  
us for your BMP Requirements.

**Tensar**  
NORTH AMERICAN GREEN<sup>®</sup>

(707) 678-5087 [www.LinwoodSupply.com](http://www.LinwoodSupply.com)

Worldwide Experts in:

- Erosion Control
- Retaining Walls & Soil Reinforcement
- Roads & Pavements
- Coastal & River Protection

Engineering a better solution

Visit us at:

[www.maccaferri-usa.com](http://www.maccaferri-usa.com)

**MACCAFERRI**



Wholesale Seed to the Erosion  
Control and Restoration Industries

California Native Grasses,  
Wildflowers & Forbs

(925) 373-4417, [info@pcseed.com](mailto:info@pcseed.com)  
or visit: [www.pcseed.com](http://www.pcseed.com)

# Professional Listings

**Kelley Erosion Control, Inc.** established in 1983, recognized throughout Nevada and California as a leader in the industry. KEC has an excellent reputation known for quality, competency, solutions, innovative ideas, cutting edge technology, excellence and client satisfaction. Services include: Hydroseeding, site preparation, dust control applications, BMP's, storm water pollution inspection and monitoring, revegetation and project maintenance, site winterization, wetland mitigation, stream channel stabilization, planting and irrigation, mining reclamation, soil stabilizer applications, biotechnical applications, fire restoration/rehabilitation, water quality, turbidity control & pH sampling for SWPPP requirements. Contact - Claudia Chambers CPESC, CISEC, QSP, [claudia@kelleyerosioncontrol.com](mailto:claudia@kelleyerosioncontrol.com), phone (775) 322-7755. Visit us at [www.kelleyerosioncontrol.com](http://www.kelleyerosioncontrol.com).

**JL StormWater Consultants, Inc.** is a State Certified SBE/DBE/WBE/UDBE Company. [www.jlstormwater.com](http://www.jlstormwater.com). Jane Ledford, Principal, [jane@jlstormwater.com](mailto:jane@jlstormwater.com) or (619) 922-6511. Services include: Environmental Permit Preparation, Processing and Compliance, SWPPP Preparation and Processing, SWPPP Implementation, SWPPP Inspections, SWPPP Training including the newly adopted Construction Storm Water Permit, Trainer of Record for the QSP/QSD classes, Construction Monitoring, Biological Resources Monitoring, Cultural Resources Monitoring, Coordination with Native American Monitors, English-Spanish Translation of Worker Education Materials.

**Maccaferri** — For over 135 years, **Maccaferri** has provided innovative, sustainable products and solutions to the construction industry. With locations in more than 100 countries, Maccaferri is a world leader in gabion retaining structures and offers engineered solutions in Erosion Control and River Training; Basal Reinforcement for Roads; Railways and Embankments; Retaining Walls and Sloped Soil Reinforcement Applications; Soil Stabilization and Paving; Rockfall Protection; Mining Solutions; Coastal Protection & Waterways Management; as well as Landfill Reclamation and Polluted Sites. At Maccaferri, our goal is to become a leading international provider for advanced solutions for the civil engineering and construction market. Contact: Pino Cignarella, West Coast Sales Manager (916) 371-5805 or [wcoffice@maccaferri-usa.com](mailto:wcoffice@maccaferri-usa.com).

**Sustane Natural Fertilizers** — For over 30 years of continuous operation, Sustane Natural Fertilizer, Inc. has produced the highest quality Natural Based and Organic Fertilizers and Soil Amendments distributed in the U.S. and exported to 50 countries worldwide. Sustane Natural Fertilizer maintains and operates its U.S.E.P.A. permitted compost site, manufacturing facility and corporate offices from Cannon Falls, MN. Sustane Fertilizers and Soil Amendments provide readily available, balanced nutrition with beneficial microbiology to provide the basic soil components for exceptional plant establishment and long term sustainability. Call (800) 352-9245 to speak with a Sustane Regional Specialist or with our International Team Leader.

**Pacific Coast Seed** is Northern California's premier supplier of CA native grasses and wildflowers, turf grass seed, and other erosion control materials such as fertilizers, mulches, and soil amendments. We provide seed and other materials for diverse applications including restoration, reclamation, revegetation, ornamental landscaping, and erosion control. We offer specialty seed collection from site-specific sources. For more information check out our website [www.pcseed.com](http://www.pcseed.com) or contact us at (925) 373-4417 or [info@pcseed.com](mailto:info@pcseed.com).

**Linwood Supply, Inc.** is your distributor of BMPs for Erosion Control and Storm Water Management offering Erosion Control Blankets, TRM products, Fiber Rolls, netting, HydroFiber™, Soil Polymers, dust controls, fertilizers, seed, man-made and natural chemistries, and generally providing you with the kind of service and professionalism you deserve. Linwood Supply, Inc. is a certified small Business based in California, a member of the International Association of Hydroseeders, and a proud member of the Western Chapter of IECA. If Your Storm Water is as Clear as Mud™ – Please call us at (707) 678-5087 or visit us at [www.linwoodsupply.com](http://www.linwoodsupply.com).

**Marvin E. Davis & Associates, Inc.** focuses on the challenging issues of the Tahoe Basin and Northern Nevada/California terrain. Our professionals provide a diverse and solid background in geotechnical engineering; specialized engineering design; erosion control services; construction and forensic inspection services and materials testing; and, regulatory and compliance issues to enable project approval. Phone (775) 853-9100 or visit us at [www.mdageotechnical.com](http://www.mdageotechnical.com).

## Training Courses, Exam Reviews and Exam Dates

EnviroCert International provides oversight and direction for the **CPESC**, **CESSWI**, **CPSWQ**, **CMS4S** certification programs. Phone: (828) 655-1600 Email: [david@envirocertintl.org](mailto:david@envirocertintl.org). See [www.envirocertintl.org](http://www.envirocertintl.org).

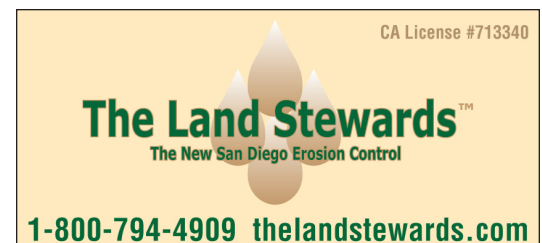
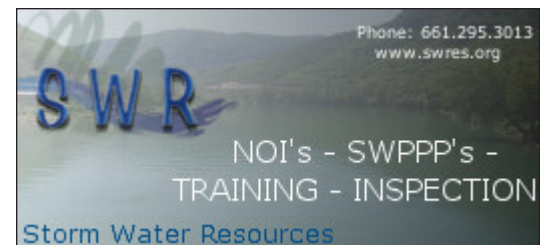
**California Construction General Permit QSD and QSP Training Courses** provided by CASQA-qualified CGP Trainers of Record (CGP-ToR). Professionals developing SWPPPs (QSDs) or professionals implementing SWPPPs (QSPs) under the CA construction general permit must complete this training. See [www.casqa.org/TrainingandEducation/ConstructionGeneralPermitTraining/CPGTrainingforQSDandQSP/tabid/208/Default.aspx](http://www.casqa.org/TrainingandEducation/ConstructionGeneralPermitTraining/CPGTrainingforQSDandQSP/tabid/208/Default.aspx)

## Trainings – Offered by CISEC

For one and one-half day construction site inspector training modules on sediment and erosion control. Visit [www.cisecinc.org](http://www.cisecinc.org) for various dates and locations coming up in California.

## IECA Webinars

IECA eLearning Online Webinars usually are one hour in length and credit attendees 1 Professional Development Hour. See [ieca.crhosts.com](http://ieca.crhosts.com)





# Erosion Control BMP Summit

**Date: May 1<sup>st</sup> & 2<sup>nd</sup> 2015    Location: Shasta College, Redding, CA**

**Vendors will be on site with the latest in Erosion Control BMP practices beginning April 30<sup>th</sup>**

A two-day workshop presented by Shasta College, Sacramento Watersheds Action Group (SWAG) and Western Chapter International Erosion Control Association. This workshop will be presented by highly acclaimed instructors, David Franklin and John McCullah.



## Shasta College



### WESTERN CHAPTER

INTERNATIONAL EROSION CONTROL ASSOCIATION

More than ever before your BMPs must be "effective. You will learn now, the SWPP developers, the implementer, the contractors, the regulators, and the inspectors must acquire education and training and then demonstrate that knowledge through certifications.



This workshop is intended to de-mystify the BMP selection process, the SWPPP, while learning about the importance of drainage, infiltration, rooting depth, grading for erosion control, and some steep slope applications.



**On Thursday - EnviroTech NPDES Services w/David Franklin will also be offering a Class on Industrial General Permit and Sampling Techniques.**



**Register at:**

[www.watershedrestoration.org](http://www.watershedrestoration.org)

**or call 530-247-1600**

*Shasta College is an equal opportunity educator and employer.*

**Just a walk away is the Shasta College Erosion Control Training Facility. This is where we will spend the second day – actually watching and participating in BMP implementation.**

The two-day workshop is \$400.00. Group Rates will be offered for 2 or more registrants, this will include coffee, beverage, snacks and lunch for two days. You will be receiving a certificate of attendance for continuing education.



# SHASTA COLLEGE EROSION CONTROL BMP SUMMIT

May 1-2, 2015



## EXHIBITOR OPPORTUNITIES!

The two-day BMP workshop will offer:

- Full Day classroom on Friday.
- Saturday instruction on BMPs will be out in the field - the Shasta College Erosion Control Training Facility
- **Topics include:** *Erosion control on roads ♦ Ranch/farm trail applications ♦ Runoff and drainage ♦ rolling dips, outsloping ♦ sediment controls ♦ skimmers, baffles and ponds ♦ new equipment & products ♦ compost blowers and socks ♦ drive over wattles*
- **Exhibitors will present New Equipment, Products, and Materials.** Set-up, register, and coffee: 7 - 8 a.m.

---

### EXHIBITOR REGISTRATION May 1-2, 2015 – please check appropriate boxes

- ☐ **SHOWCASE Exhibitor** – Limited to 4 (Includes everything listed for Two Days, **PLUS** dedicated time on Saturday's agenda to demonstrate use or application of your product. Bare soils or slope provided. *Exhibitor must come self-sufficient to demonstrate product or installation.*
- ☐ \$650 for IECA Member Exhibitor      ☐ \$800 Otherwise
- ☐ \$50 for Each Additional Table or Space Attendant, includes breaks and lunch.
- ☐ **Two Days** (Inside Table on Friday AND an Outside Table or Space on Saturday), including breaks and lunch for 1.
- ☐ \$500 for IECA Member Exhibitor      ☐ \$600 Otherwise
- ☐ \$50 for Each Additional Table or Space Attendant, includes breaks and lunch.
- ☐ **One Day** (Inside Table on Friday OR Outside Table or Space Saturday), including breaks and lunch for 1.
- Indicate which day** ☐ **Friday** or ☐ **Saturday**
- ☐ \$400 for IECA Member Exhibitor      ☐ \$450 Otherwise
- ☐ \$25 for Each Additional Table or Space Attendant, includes breaks and lunch.

Company Name: \_\_\_\_\_

Name(s)/Email(s) of Exhibitor \_\_\_\_\_

Address/Phone: \_\_\_\_\_

**Mail** Check (Payable to WCIECA) along with Completed Registration to:

P.O. Box 474

Cedar Ridge, CA 95924

Email / Fax completed registration (and mail check) to reserve your spot.

For questions, contact Cyndi: [westernchapter@gmail.com](mailto:westernchapter@gmail.com) Phone (530) 272-2407 Fax (530) 231-6181



## **How to Host a Pub/Pizza/Social Night/Lunch or Mixer for WCIECA Members and Non-Members in 10 Easy Fun Steps!**

**Why have this function?** It is a fantastic opportunity to network with chapter members and others in the 'trade' to discuss current issues in a relaxed and informal atmosphere. Talk about local erosion and sediment issues, regulation updates, new techniques or other related issues.

### **How to host?**

- ☐ Decide on the Type of Event:
- ☐ Pick a Venue and Location:
- ☐ Volunteer Recruitment: Find people to help.
- ☐ Guest Speaker: Will you have a guest speaker? Are audio visuals needed? Note: this may change the type of venue.
- ☐ Date:
- ☐ Time:
- ☐ Advertise: Get list of Western Chapter members, non-members and potential attendees for the area. The Administrative Assistant can help with this.
- ☐ Budget: Reimbursable costs of \$10 per person in attendance for snacks and non-alcoholic beverages. If reimbursement for snacks and non-alcoholic beverages is being contemplated, a Board member should either attend or be notified prior to the event.
  - a. Food: Consider economical food like finger foods or pizza
  - b. Beverage: Attendees to pay their own bar tab.
- ☐ At Event:
  - a. Have designated greeter(s) if possible.
  - b. Send around a sign-in sheet to reconnect with people for the next event or to start a social network.
- ☐ Follow up:
  - a. Send thank you notes and invitations to next function.
  - b. Submit receipts to WCIECA Treasurer with the form obtained from the Board Member.